

# Taskforce Meeting:

Objective: Mobilizing hand hygiene to end the ongoing shigellosis outbreak.

April 13<sup>th</sup>, 2016



**Promoting A Safer and Healthier Community Since 1854**

# Agenda

---

- 1. Background**
- 2. Update on the outbreak**
- 3. Prevention—Hand hygiene**
- 4. Discussion**

# Background: Transmission

---

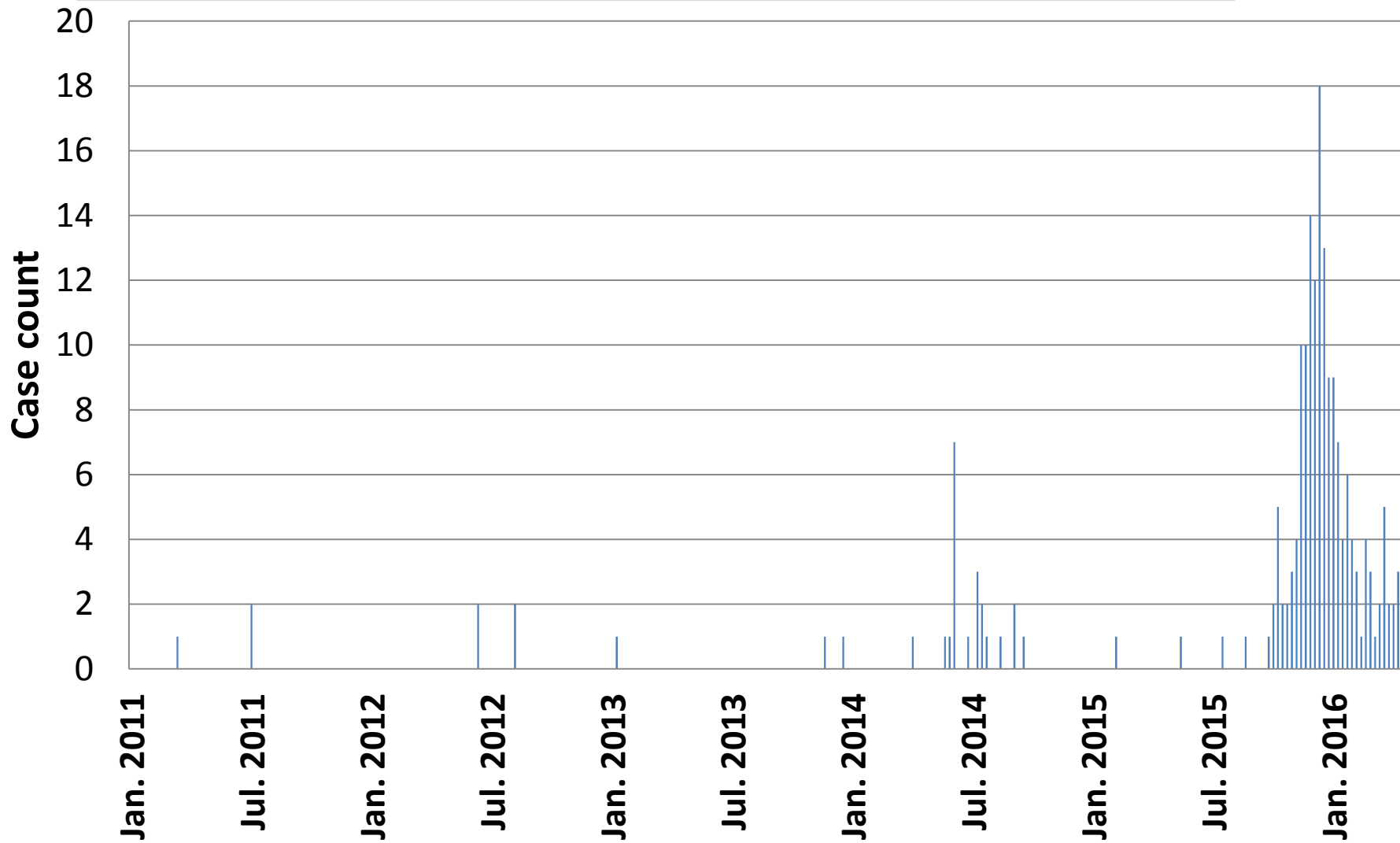
- **Very contagious**
- **Small number of bacteria needed to cause infection**
- **Bacteria is shed in feces**
  - **During diarrhea**
  - **About 4 weeks after diarrhea**
  - **Antibiotics shorten shedding**

# **Background: Transmission**

---

- **Contact with contaminated objects**
  - **Object → Mouth**
- **Preventing transmission: Hand hygiene**

# Laboratory Confirmed Shigellosis Cases by Date of Onset -- Jan. 2011 to April 2016

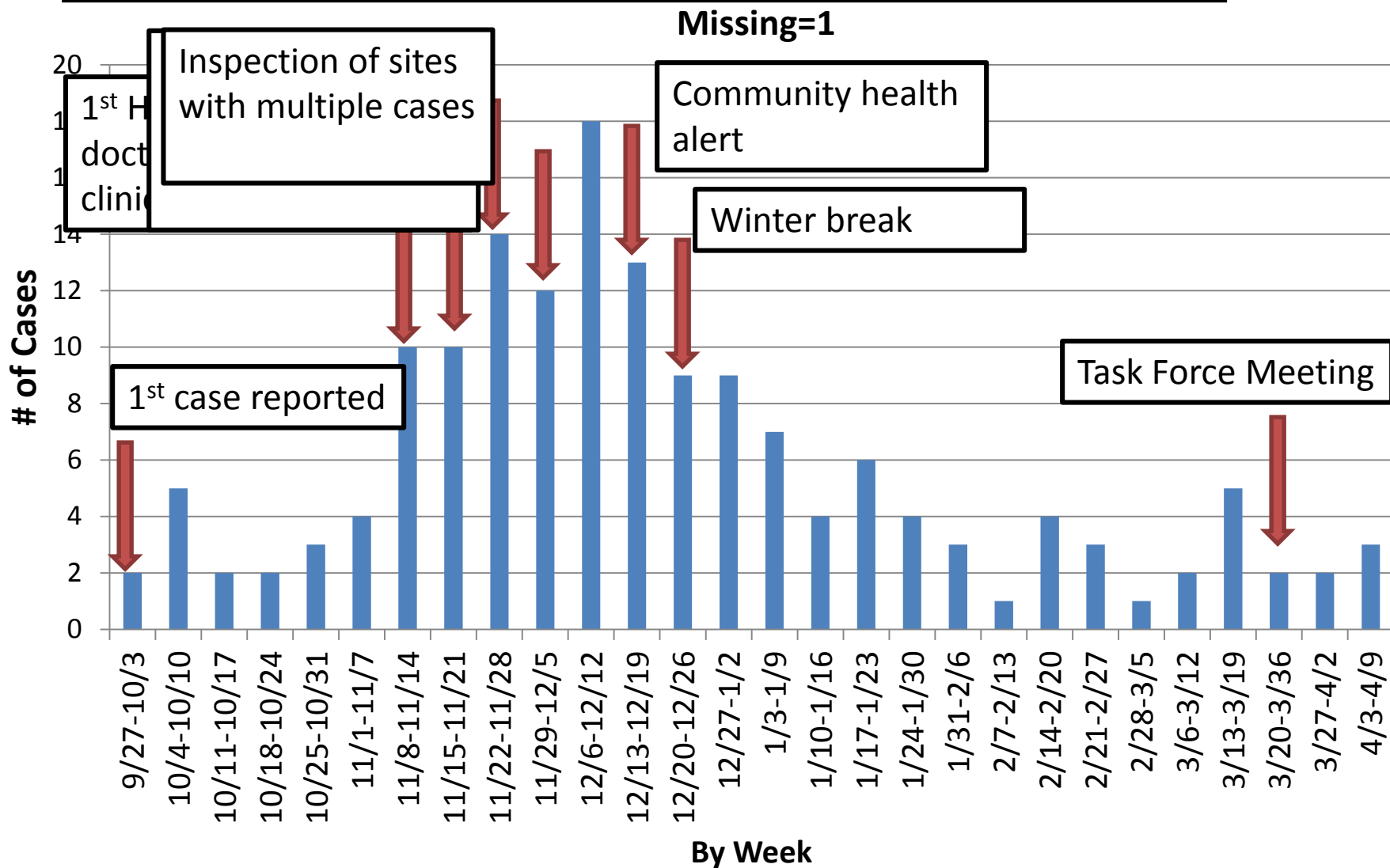


# The Outbreak

---

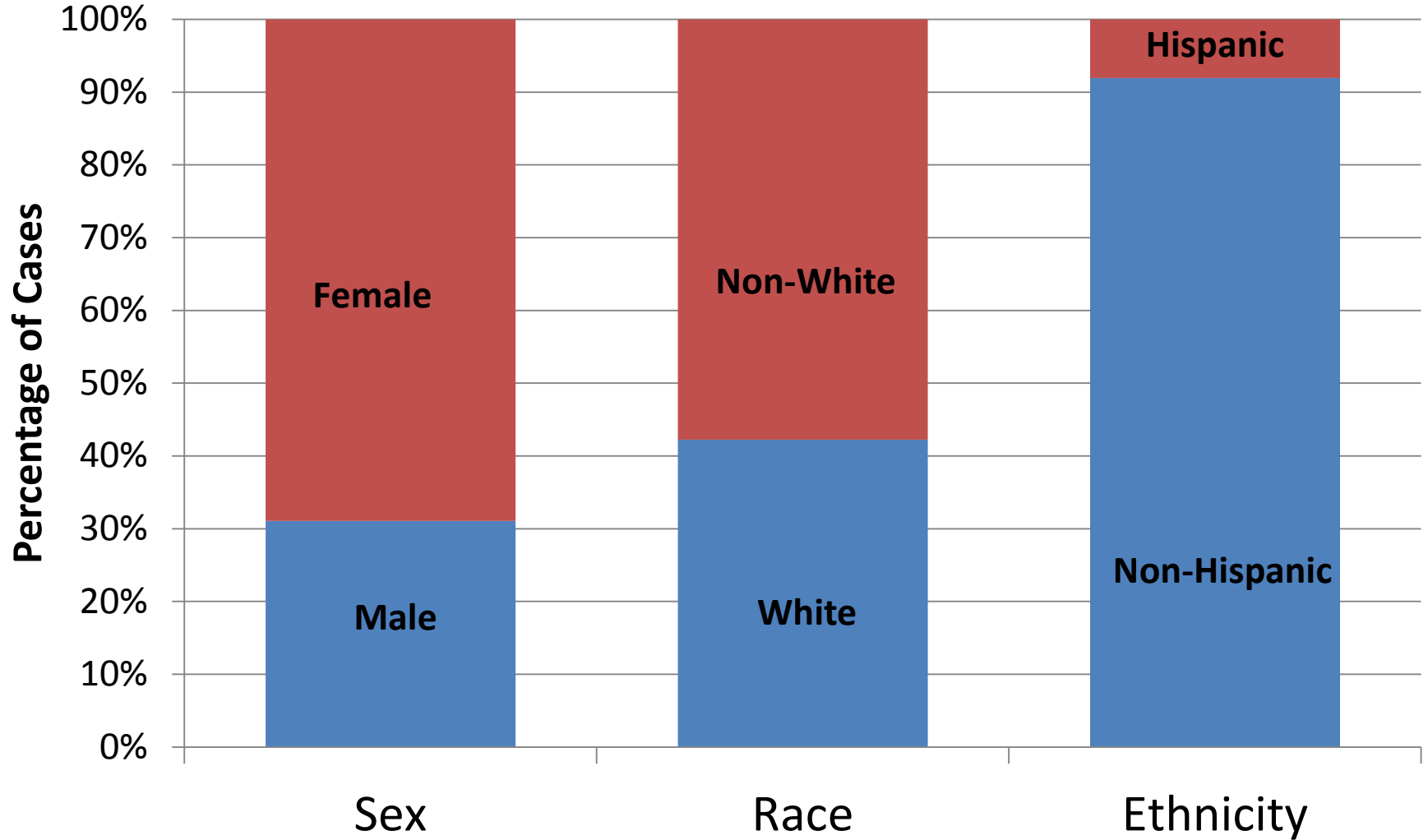
- **First case reported: October 7<sup>th</sup>, 2015**
- **187 cases**
  - **161 laboratory confirmed cases**
  - **26 probable cases**
- **Residents of Rockford: 90%**

# Epidemic Curve of Laboratory Confirmed Shigellosis Cases by Date of Onset n=161



# Proportion of Cases by Demographics

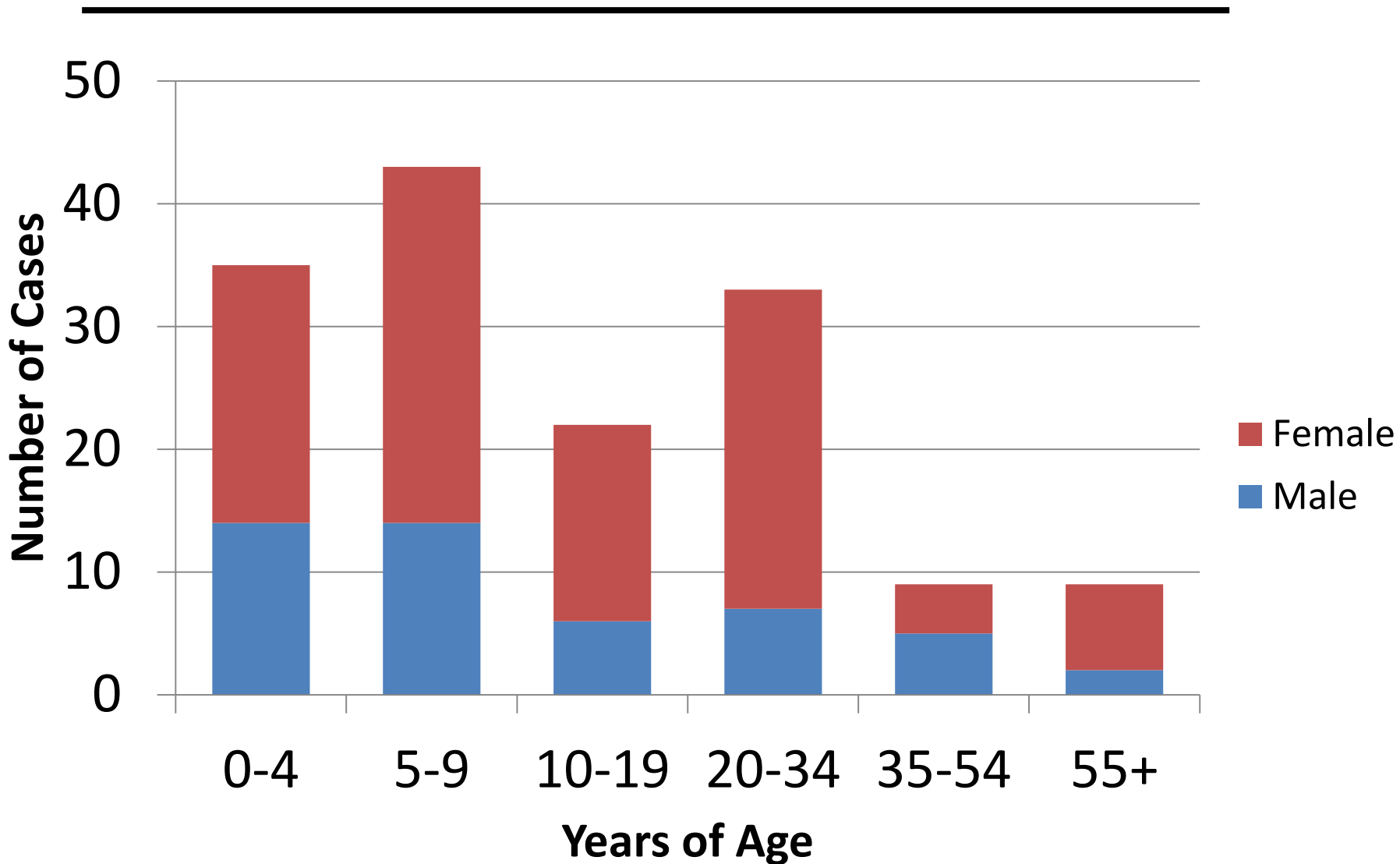
N=161





# Laboratory Confirmed Cases by Age and Sex

n=161



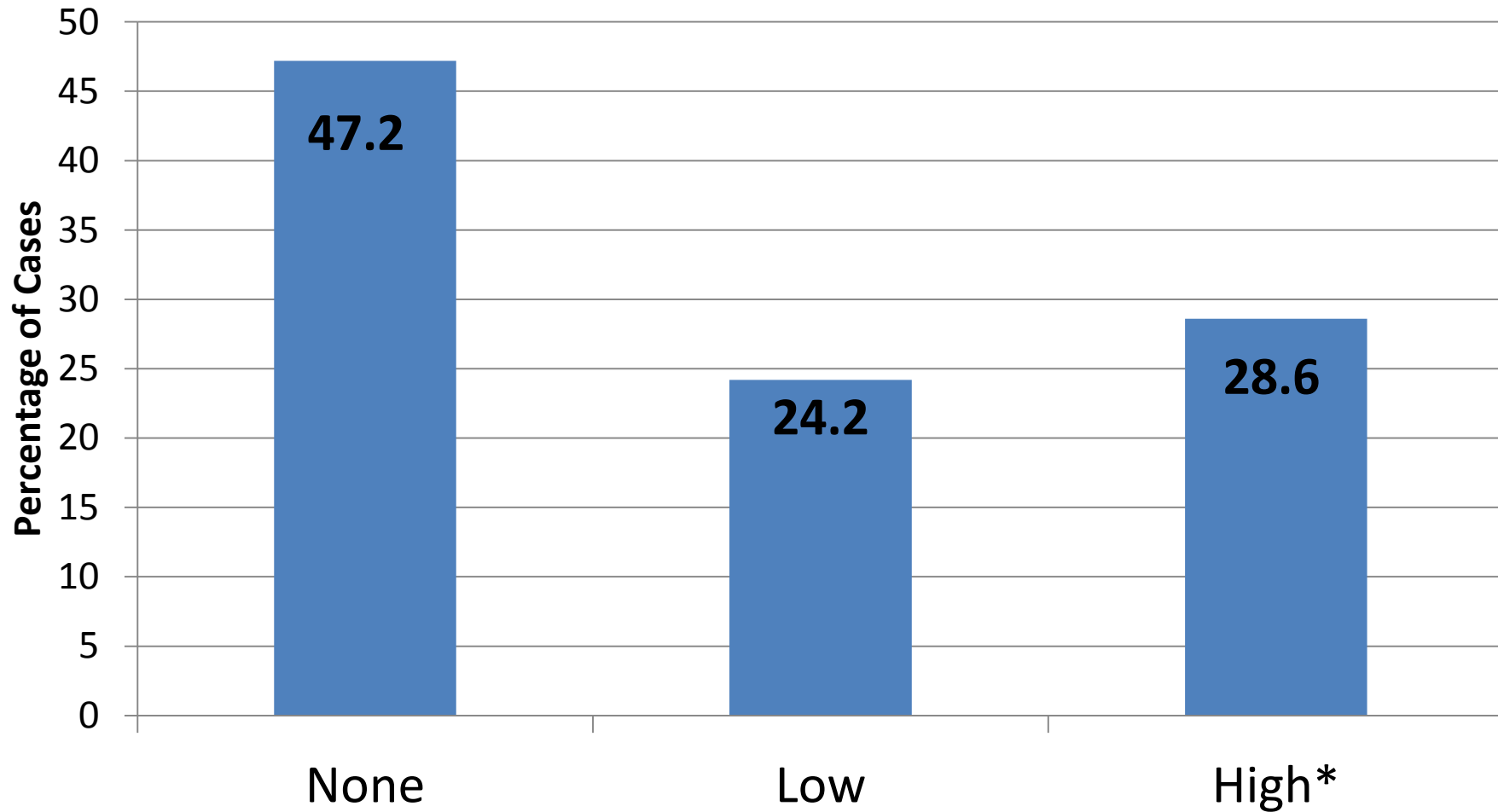
# The Outbreak

---

- **84% of cases reported symptoms other than diarrhea.**
  - **Fever: 53%**
  - **Vomiting: 46%**
  - **Bloody diarrhea: 39%**

# Proportion of Cases with Fever

N=161



\*High Fever= 101.5 F and above

# Prevention

---

- **Points of emphasis when teaching hand washing:**
  - Lather hands for 20 seconds
    - Need a timer? *Happy Birthday* is 10 seconds
  - Don't touch the faucet handles with bare hands after washing
    - Use a paper towel
- **Hand sanitizer use:**
  - Rub hands together until dry

# Prevention:

---

## When to enhance hand hygiene:

- **Before eating**
- **After using the toilet**
- **After helping a child use the toilet/ changing  
diapers**
- **Before food preparation**
- **After caring for an ill person**

# COMMUNITY TASK FORCE

Vision: Healthy people in a healthy community without health disparities

# Enhanced Hand Hygiene

---

- Examples of enhanced hand hygiene:
  - Monitoring adequacy of hand hygiene
  - Don't let up on hand hygiene
  - Ensure staff and children are doing what is needed
- Potential additional benefit:
  - Prevention of other diarrheal disease
  - Reduction of influenza
  - ? Reduction of severe Rhinovirus

# Surveillance is “Information For Action”

- In addition to hand hygiene:
  - Send notices home when cases occur
  - Report sooner
  - Encourage testing and reporting
  - Some free testing available through Health Department/State Lab
- We may see a peak in the epidemic curve again



# Open discussion of activities performed and planned

**Next meeting: TBA**

*Based on surveillance data*