

# Influenza

## SURVEILLANCE REPORT

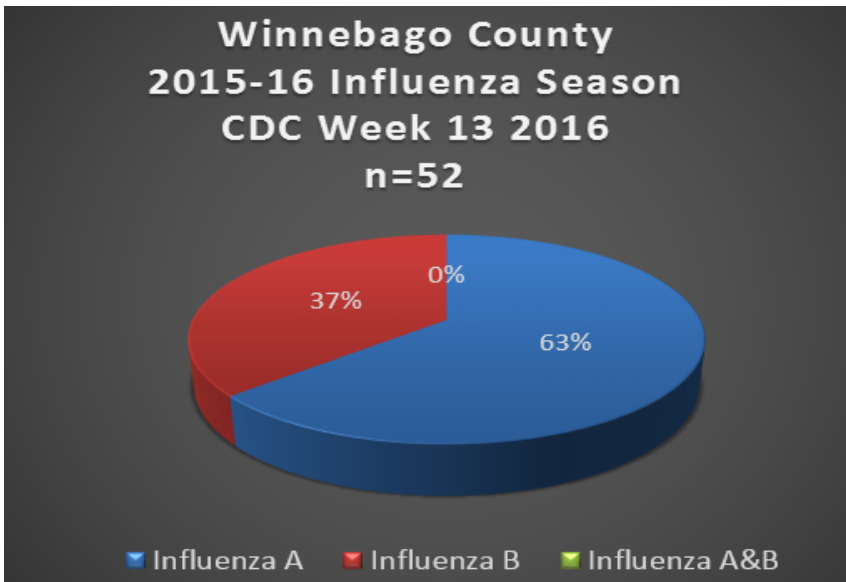
### CDC Week 13: March 27 – April 2, 2016

**Weekly Influenza Activity Summary:** Influenza surveillance for Winnebago County involves the weekly collection of data from hospitals, physicians and laboratories. The current level of influenza activity has decreased from the previous week. The graphic displays indicate the incidence of influenza and populations affected for Week 13. Thank you to all of the surveillance partners for their help in collecting this information.

The Health Department recommends the continued efforts in:

- 1). Influenza vaccination for the unvaccinated
- 2). Promotion of the three C's in helping prevent the spread of influenza in our community:

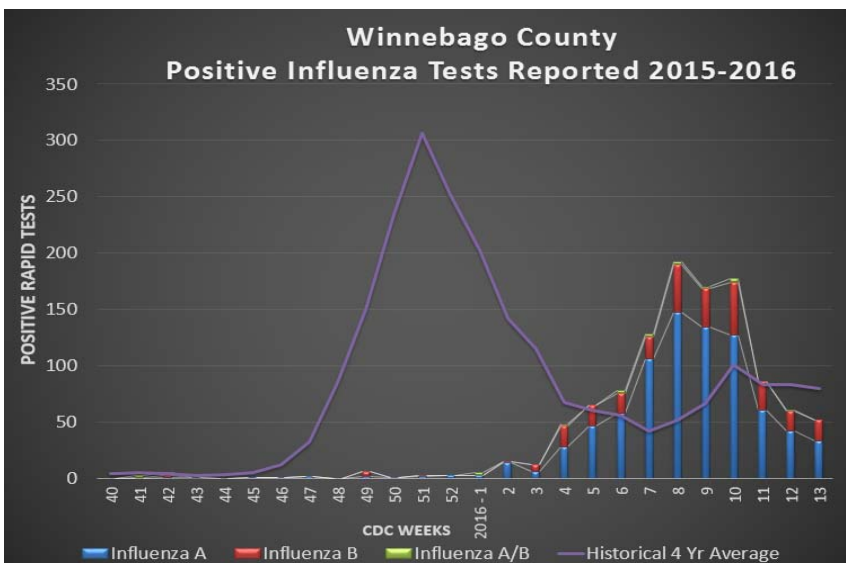
- ✓ **CLEAN** - Wash your hands
- ✓ **COVER** - Cover your cough and sneeze
- ✓ **CONTAIN** - Contain your germs, stay home if you are sick



← Figure 1: Illustrates the total number of cases along with the “type” of influenza reported during the surveillance week.

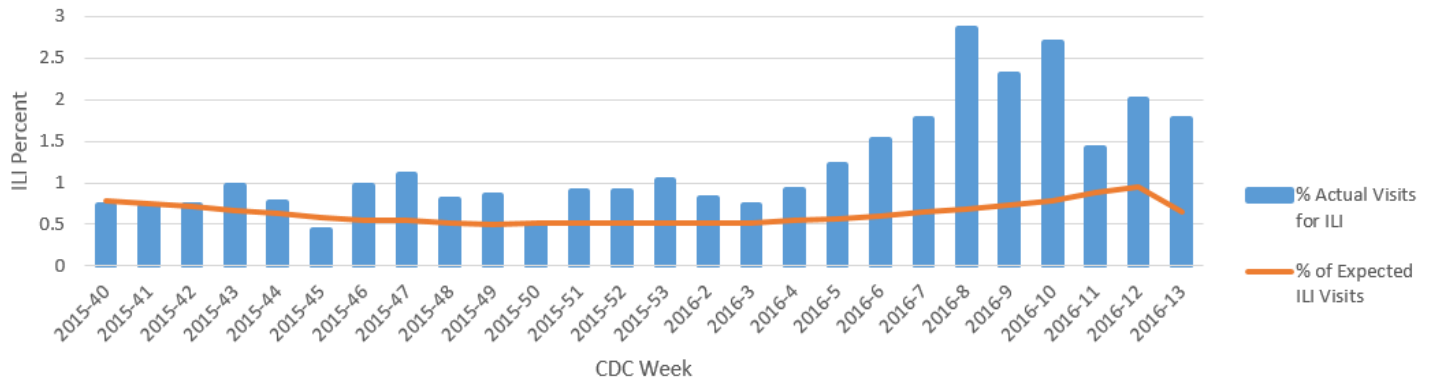
Total Number of Cases for the Week By Age Distribution			
Age Range	Influenza A	Influenza B	Influenza A&B
0-4	8	3	0
5-17	15	9	0
18-64	5	5	0
65+	5	2	0
<b>Totals CDC Week 13</b>	<b>33</b>	<b>19</b>	<b>0</b>

← Figure 2: Illustrates the total number of cases reported during the current Influenza Surveillance Period. The four year historical average for the County is noted by the purple line on the graph.

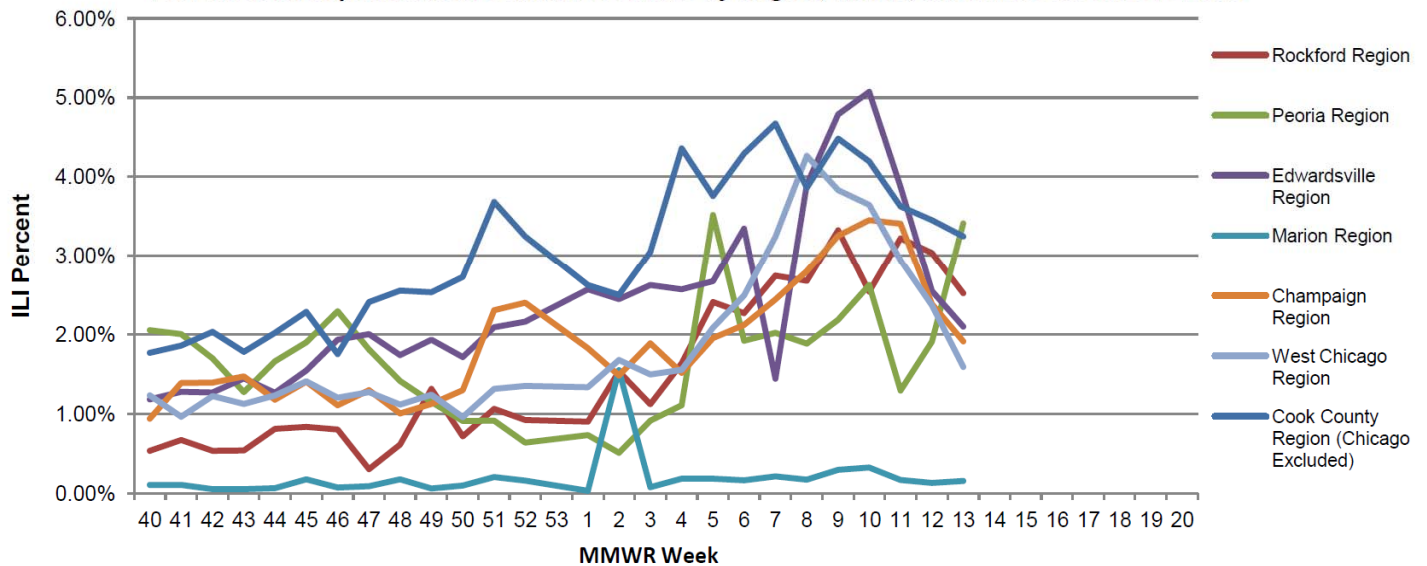


# Influenza Like Illness (ILI) Reported on a Local, State & National Levels

Percent of ILI Reported from Sentinel Providers in Winnebago County, Influenza Season 2015-2016



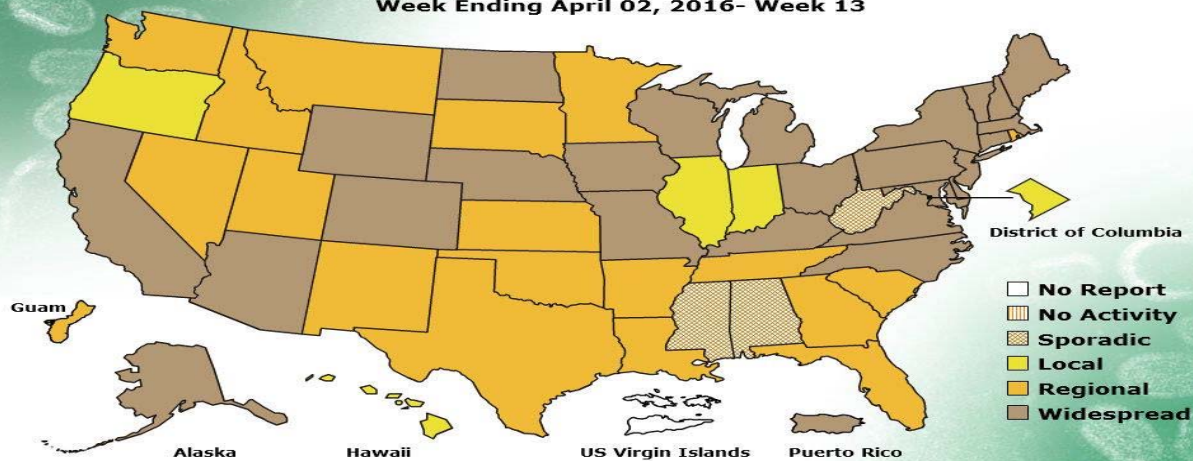
Percent of ILI Reported From Sentinel Providers by Region, Illinois, Influenza Season 2015-2016



## FLUVIEW

A Weekly Influenza Surveillance Report Prepared by the Influenza Division  
Weekly Influenza Activity Estimates Reported by State and Territorial Epidemiologists\*

Week Ending April 02, 2016- Week 13



\*This map indicates geographic spread and does not measure the severity of influenza activity.