



# *Winnebago County Health Department*

## Public Health Services 2009 Annual Report

October 1, 2008 - September 30, 2009



# Public Health Services in Our Community

- Prevent epidemics and the spread of disease
- Protect against environmental hazards
- Prevent injuries
- Promote and encourage healthy behaviors
- Respond to disasters and assist communities in recovery
- Assure the quality and accessibility of health services



**Public Health**  
Prevent. Promote. Protect.

# From the Administrator

*Dear Community Residents:*

*Some of the best health care in Illinois is provided right here in Rockford and Winnebago County. This excellent system is designed to mend what is broken. Unfortunately, it does not fix the social conditions that break individuals in the first place. The Winnebago County Health Department is the only organization in the community that focuses solely on the health and well-being of everyone. Specific threats are unpredictable, but occur with regularity.*

*In 2009 our community experienced several food borne outbreaks, the majority of which involved Norovirus. Perennially now we are facing environmental hazards including West Nile Virus and most recently pandemic influenza risks. 2009 was one of the most unusual and challenging years for our community, our nation and for the globe. In April 2009 a novel influenza virus was identified and rapidly circulated, becoming the first influenza pandemic in 41 years. WCHD played a central role in our community's preparedness for responding to pandemics and was a central player in an unprecedented public-private partnership response that engaged every sector of our community. The community-wide response included a community education campaign and mass vaccination clinics (>340 different clinics) that administered (>62,000 doses of) H1N1 vaccine to protect our residents.*

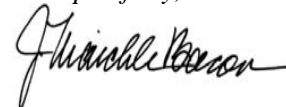
*In addition to our wonderfully responsive staff and all of their extra hours of work over this past year, it is also important to thank all of the public and private community partners, consortium members and volunteers who provided exemplary services that were essential to protecting the health of our community over the course of this pandemic. Collectively these efforts led to achieving the pandemic response strategic goals of 1) limiting death and suffering through proper preventive, curative and supportive care to those most vulnerable, 2) aiding in the application of the least restrictive interventions to contain the disease threat and 3) contributing to the economic and financial stability of the community during a pandemic that infected almost one-third of our community's residents.*

*Additionally, the public must be recognized for their adherence to the recommendations provided and for their understanding and patience in accessing educational and vaccination services throughout the course of this pandemic. Public health is often defined as what we do collectively to assure conditions in which our residents can be healthy. The 2009 H1N1 influenza pandemic response exemplifies the spirit of our community's commitment to public health practices and principles.*

*During 2009 WCHD also was one of only four local health departments nationwide to be re-certified by the National Association of City and County Health Officials through Project Public Health Ready (PPHR) as meeting national public health emergency readiness standards.*

*The following report provides a review of the important mix of prevention and wellness services that are vital to protecting our community and its residents from infectious disease threats and to optimize health at all life stages.*

*Respectfully,*



*J. Maichle Bacon*

# Table of Contents

Letter from the Administrator ..... 1

Table of Contents ..... 2

Mission and Vision Statements..... 3

Board of Health Members/Leadership Team ..... 4

Financial Figures ..... 5

Health Statistics ..... 6

Winnebago County Population ..... 7

Winnebago County Poverty/Unemployment ..... 8

Winnebago County Population/Race & Ethnicity Census ..... 9

Winnebago County Gender Ratio ..... 10

Winnebago County Birth Data ..... 11

Teen Births and Infant Mortality ..... 12

Leading Cause of Death in Winnebago County ..... 13

Winnebago County Deaths ..... 14

Winnebago County Age Adjusted Deaths..... 15

Services Offered ..... 16

Center for Family Health Services ..... 17-19

Center for Health Protection and Promotion..... 20&22

\*Selected Reportable Diseases ..... 21

Center for Environmental Health Improvement..... 24

Center for Management and Support Services..... 25

Winnebago County Health Department Map ..... 26

Contact Us ..... 27

## The 20th Century's Ten Great Public Health Achievements in the United States\*

**Top 10 Achievements in Public Health**



1. Vaccination
2. Motor-vehicle safety
3. Safer workplaces
4. Control of infectious diseases
5. Decline in deaths from coronary heart disease and stroke
6. Safer and healthier foods
7. Healthier mothers and babies
8. Family planning
9. Fluoridation of drinking water
10. Recognition of tobacco use as a health hazard

\*CDC and MMWR

# Mission Statement

*Prevent disease, promote health and enlist the community in efforts to improve the health of all Winnebago County residents.*

# Vision Statement

*Healthy people in a healthy community without health disparities.*

# Values

*Responsiveness, thoroughness, inclusiveness, interdependence, dependability/reliability, excellence, expertise, resource for community, collaborative, trustworthy, social justice.*

# WCHD Board of Health and Leadership Team

October 1, 2008 - September 30, 2009

Richard A Warrner, M.D., President  
Steven Lidvall, MD, MPH, Vice President  
Inara McGroarty, Secretary  
Alphonso Goode  
Angie Goral  
John E. Halversen, DDS  
David R. Helland, DVM  
Luci Hoover  
Deborah Lavelle  
Patricia Lewis, PhD  
James A. Powers  
Bill Robertson

*“Leadership is doing the right thing.  
It is having the vision, ability, and  
willingness to mobilize people to  
accomplish the common vision of  
public health.” - Ed Baker*

## WCHD Leadership Team

*The Winnebago County Health Department  
protects and improves community well-being  
by preventing disease, illness, and injury and  
impacting social, economic and environmental  
factors fundamental to excellent health.*

**J. Maichle Bacon, MPH, CPHA, RS**  
Public Health Administrator  
**Steve Guedet, MAPA**  
Center For Management and Support Services  
**Larry Swacina, MPH, LEPH**  
Center For Environmental Health Improvement  
**Dee Dunnett, BS, MSHA**  
Center For Health Protection and Promotion  
**Susan Maher, PhD**  
Center For Family Health Services

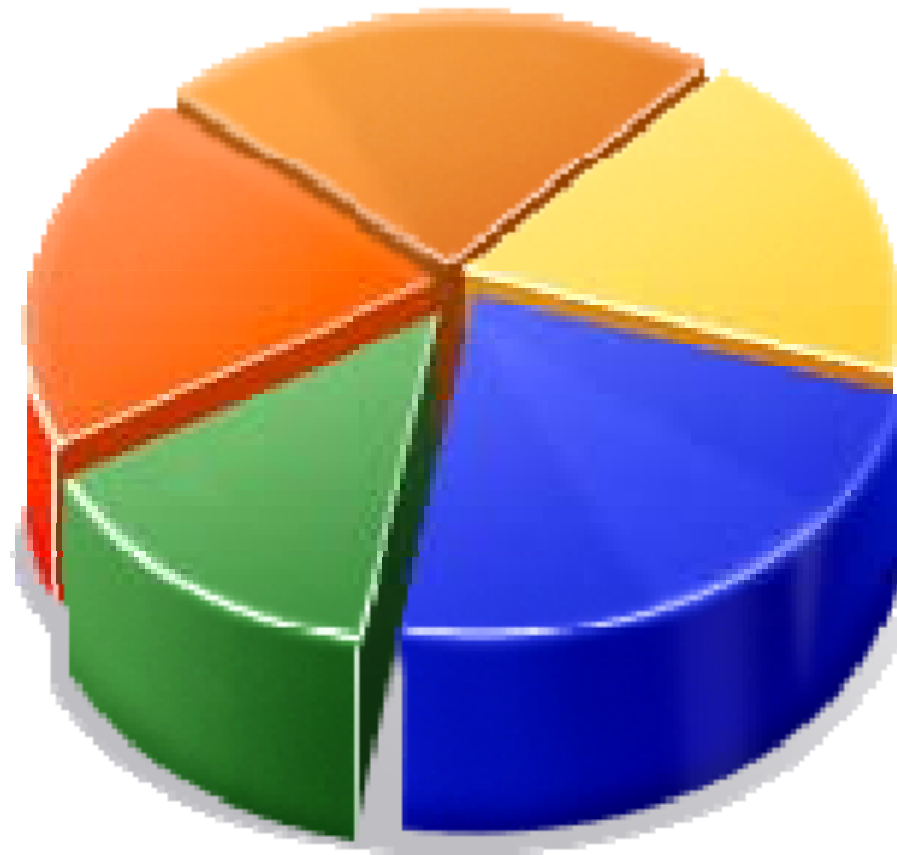
# Financial Figures

## STATEMENT OF REVENUES & EXPENDITURES FOR THE PERIOD: OCTOBER 1, 2008 THROUGH SEPTEMBER 30, 2009

<u>REVENUES:</u>	<u>Actual</u>	<u>% of Total</u>	<u>Budget</u>	<u>% of Total</u>
Taxes	\$3,321,000	22.9%	\$3,147,483	21.0%
Medicaid / Medicare	\$779,279	5.4%	\$878,147	5.9%
Fees	\$1,822,663	12.5%	\$2,016,873	13.5%
Federal, State & Local Grants	<u>\$8,601,314</u>	<u>59.2%</u>	<u>\$8,922,495</u>	<u>59.6%</u>
TOTAL	<u>\$14,524,256</u>	<u>100.0%</u>	<u>\$14,964,998</u>	<u>100.0%</u>
 <u>EXPENDITURES:</u>				
Center for Environmental Health Improvement	\$2,876,364	20.6%	\$3,227,839	21.4%
Center for Family Health Services	\$6,087,912	43.5%	\$6,596,583	43.7%
Center for Health Protection & Promotion	\$4,644,965	33.2%	\$4,999,936	33.1%
Center for Management & Support Services	<u>\$384,529</u>	<u>2.7%</u>	<u>\$266,954</u>	<u>1.8%</u>
TOTAL	<u>\$13,993,770</u>	<u>100.0%</u>	<u>\$15,091,312</u>	<u>100.0%</u>

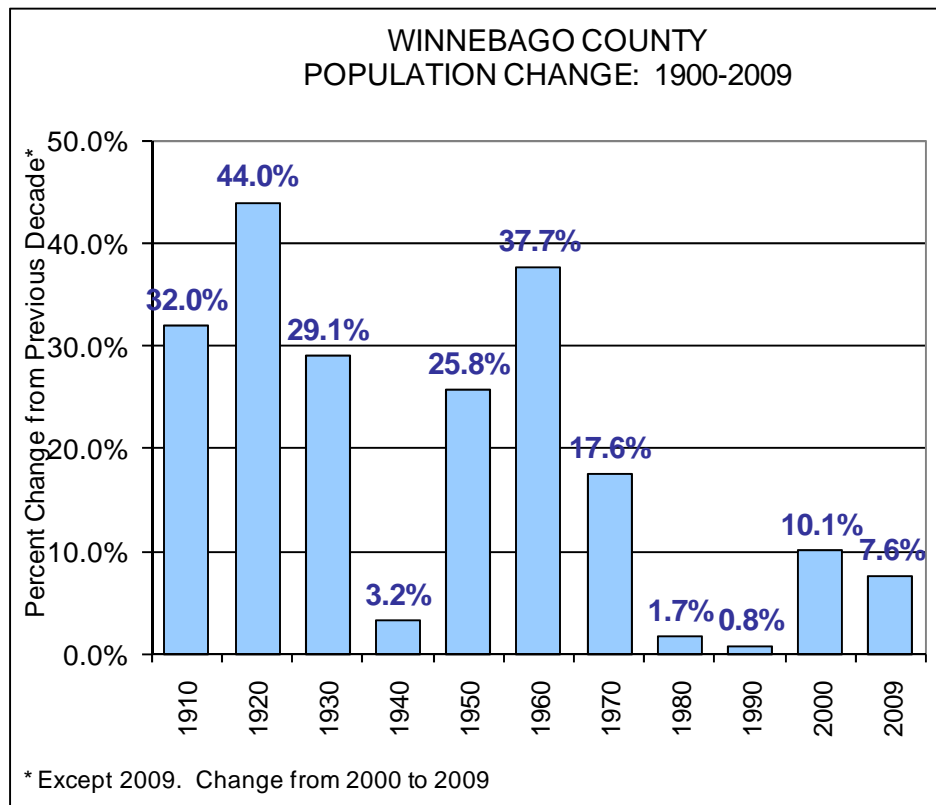
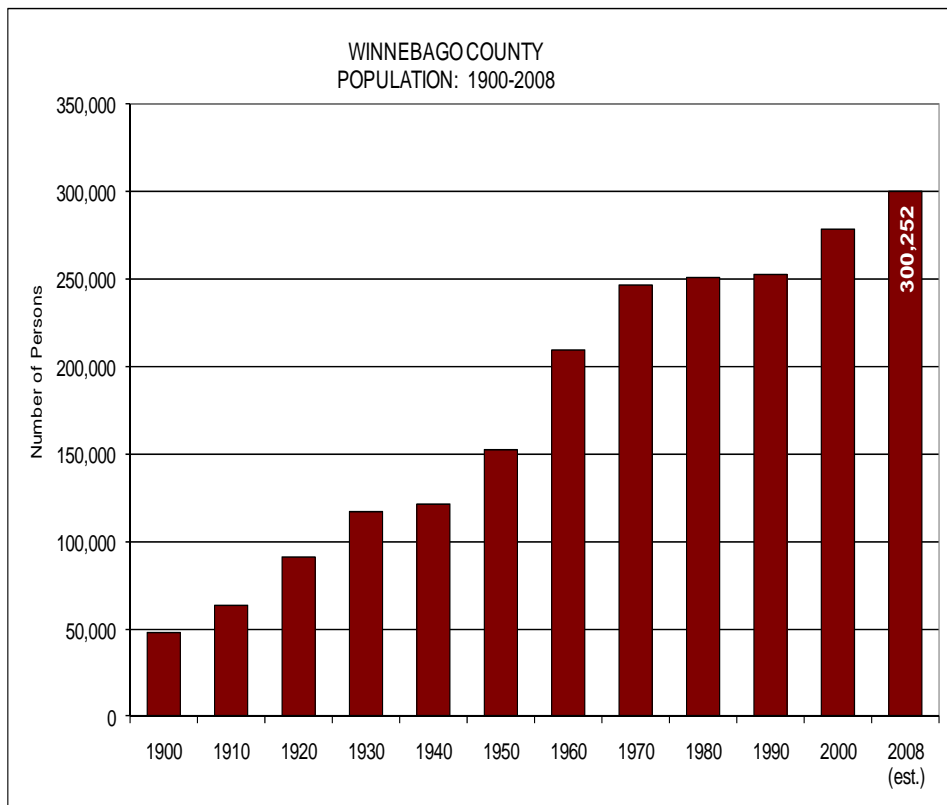
Note: Unaudited

# Winnebago County Health Statistics



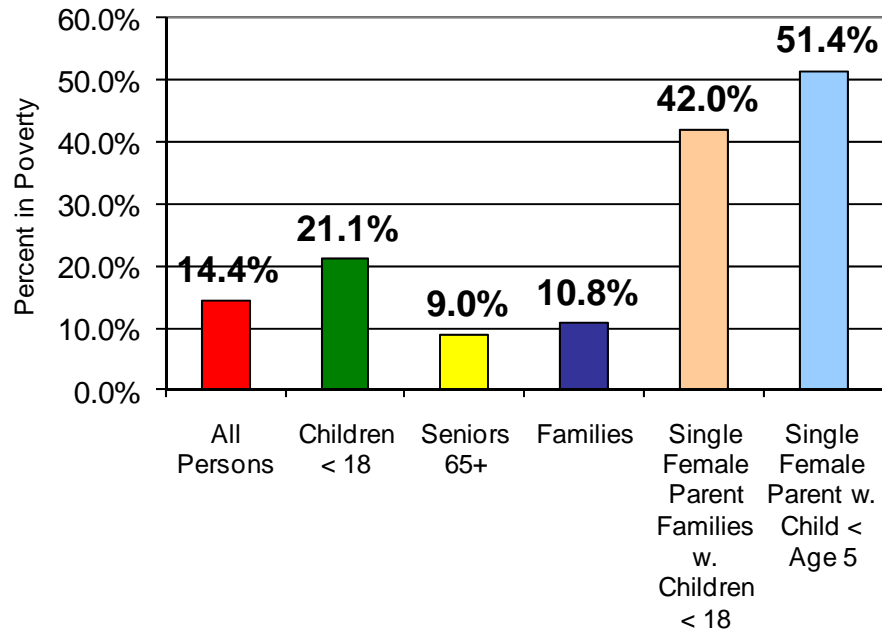


# Winnebago County Population

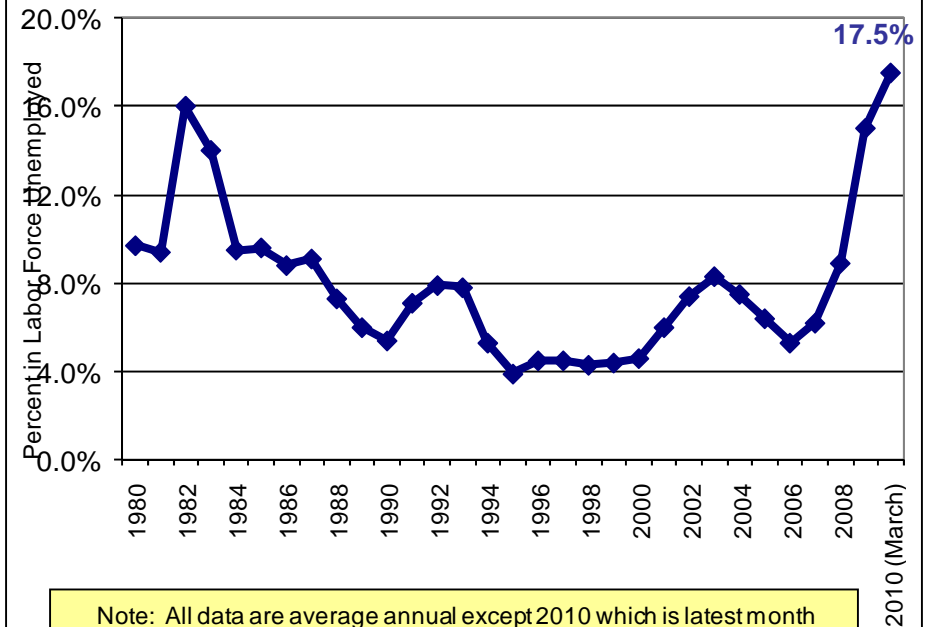


# Winnebago County Poverty/Unemployment

WINNEBAGO COUNTY  
POVERTY FOR SELECTED GROUPS: 2008

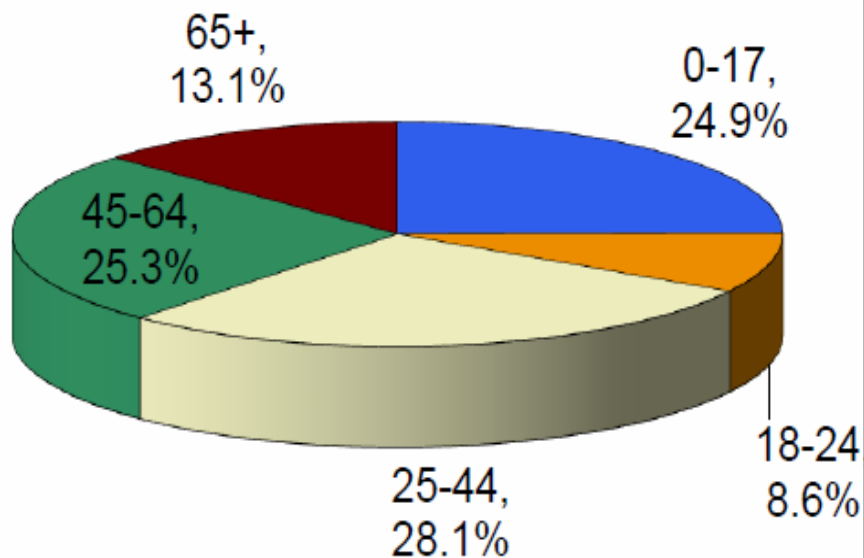


WINNEBAGO COUNTY  
UNEMPLOYMENT: 1980-2010

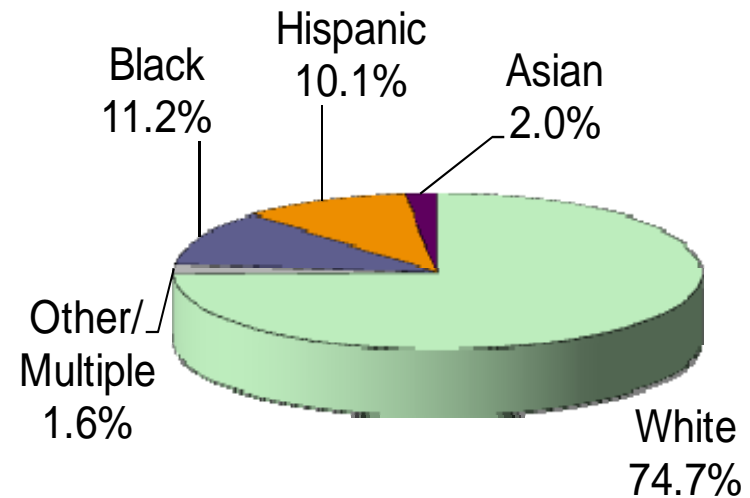


# Winnebago County Race/Ethnicity 2008 Census Estimate

WINNEBAGO COUNTY  
POPULATION BY AGE GROUP: 2008 ESTIMATE

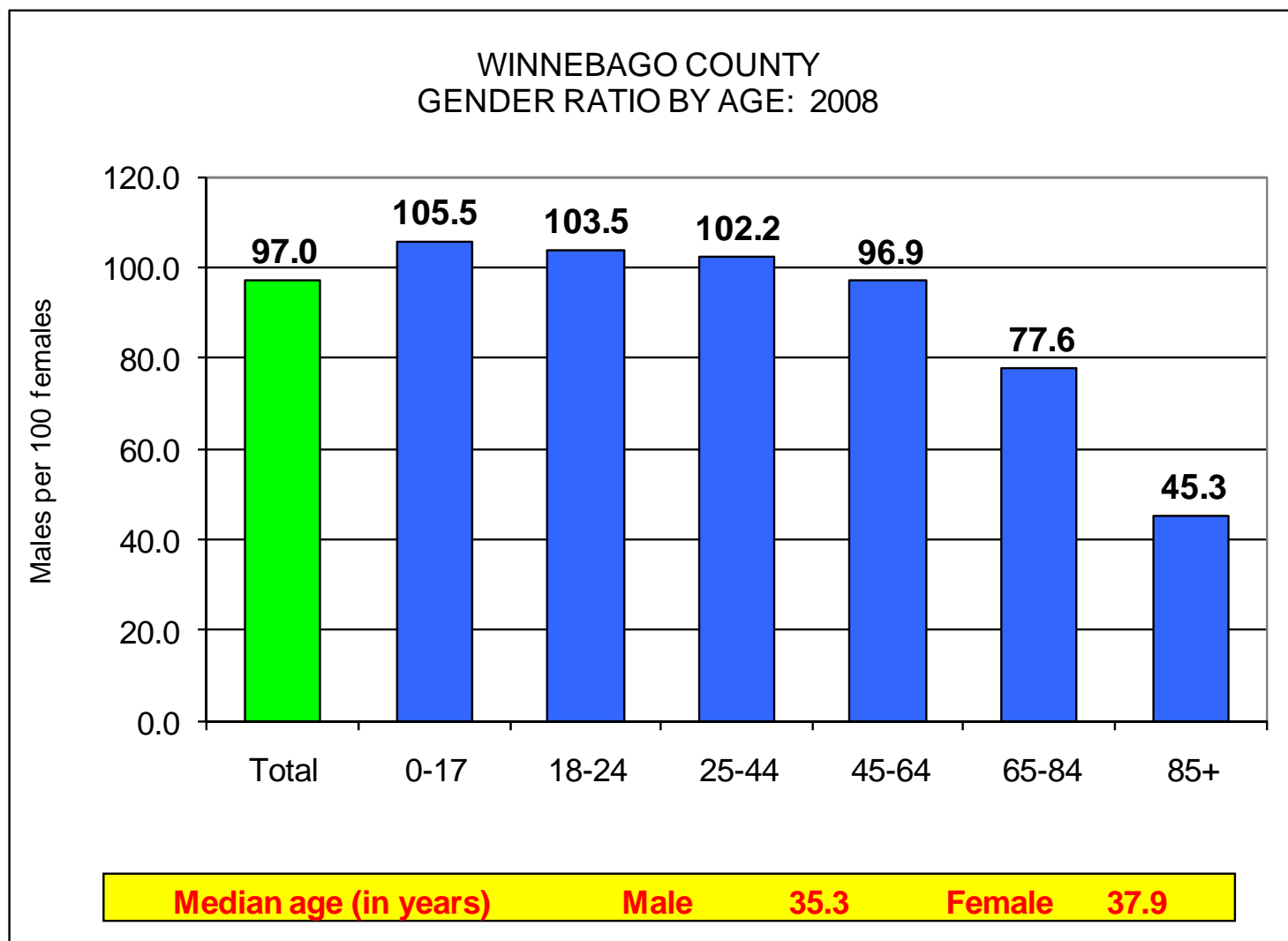


WINNEBAGO COUNTY  
POPULATION BY RACE/ETHNICITY: 2008 ESTIMATE



Note: All race/ethnic groups are non-Hispanic except Hispanic.

# Winnebago County Gender Ratio 2008 Census Estimate



# Winnebago County Birth Data 2006 - 2007

## Winnebago County - 2008

Birth Data	Number	Percent
Low Birth Weight	372	9.2%
Plural Births	143	3.5%
White Births	3,128	77.4%
Black Births	791	19.5%
Other Races	120	2.9%
Teen Births	520	12.9%
Single Parent	2,051	50.8%
<b>Total Births</b>	<b>4,039</b>	

## Winnebago County - 2007

Birth Data	Number	Percent
Low Birth Weight	381	9.2%
Plural Births	131	3.2%
White Births	3,244	78.7%
Black Births	755	18.3%
Other Races	124	3.0%
Teen Births	573	13.9%
Single Parent	2,015	48.9%
<b>Total Births</b>	<b>4,123</b>	



# Winnebago County Teen Births & Infant Mortality 2004 - 2008

## Teen Births

Winnebago Co.	Year	Births	Teen Births	%	<15 Years	15-19 Years
	2004	3,821	457	12.0%	8	449
	2005	3,792	510	13.4%	11	499
	2006	3,968	496	12.5%	7	489
	2007	4,123	573	13.9%	6	567
	2008	4,039	520	12.9%	9	511

Illinois	Year	Births	Teen Births	%	< 15 Years	15-17 Years	18-19 Years
	2004	180,665	17,819	9.9%	259	5,983	11,541
	2005	178,872	17,354	9.7%	319	5,794	11,241
	2006	180,503	18,029	10.0%	275	6,120	11,632
	2007	180,530	18,314	10.1%	260	5,988	12,066
	2008 (NA)						

## Infant Mortality

Winnebago Co.	Year	Total	**Infant Deaths	IM Rate
	2004	3,821	18	4.71
	2005	3,792	33	8.70
	2006	3,968	39	9.83
	2007	4,123	34	8.25
	2008	4,039	38	9.41

Illinois	Year	Total	Infant Deaths	IM Rate
	2004	180,665	1,317	7.3
	2005	178,872	1,294	7.23
	2006	180,503	1,343	7.44
	2007	180,530	1,196	6.62
	2008 (NA)			



\*\* Rate Is Per 1,000 Live Births

\*NA - Information Not Available

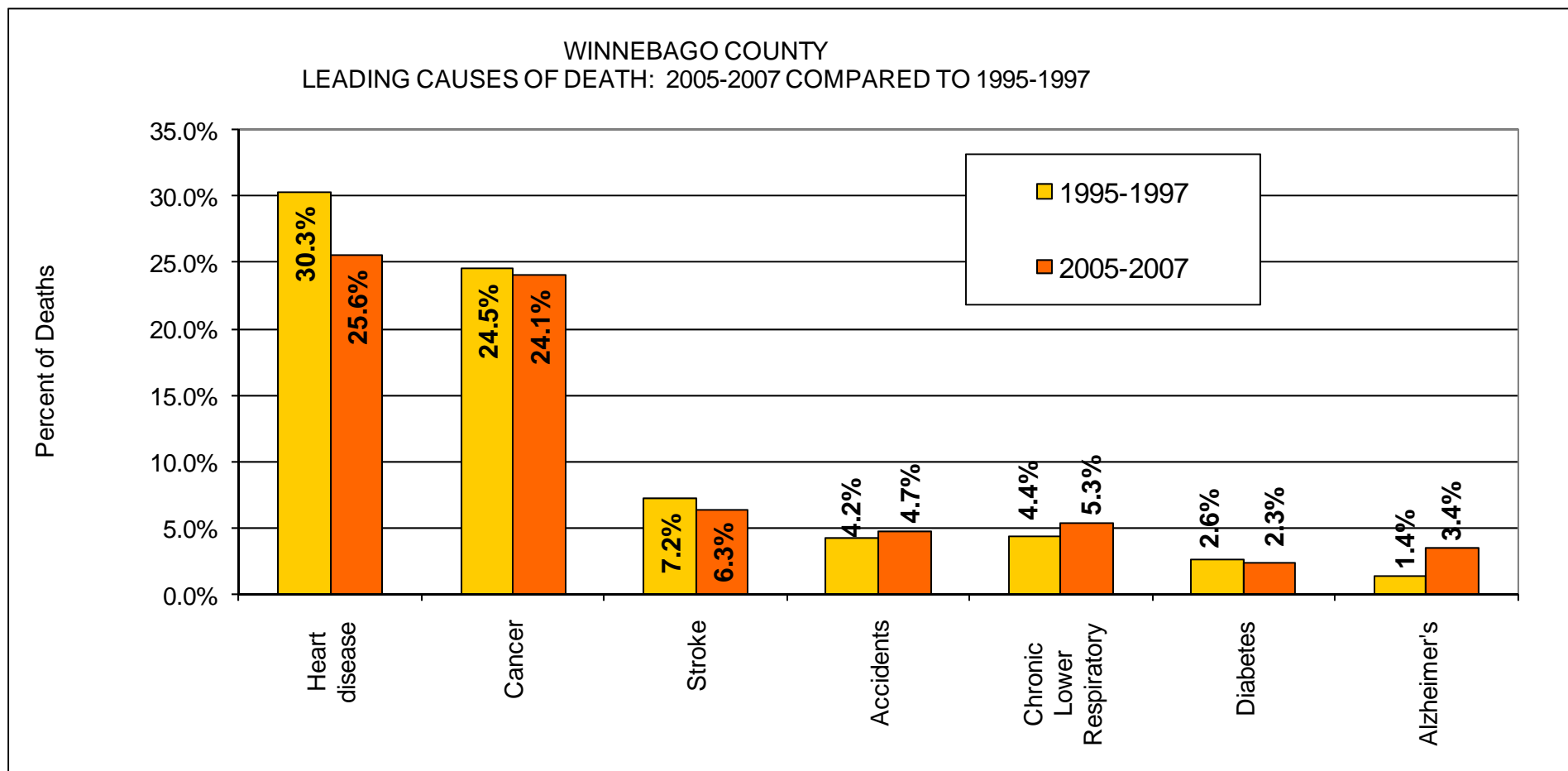
# Leading Causes of Death in Winnebago County

## Winnebago County - 2008

Cause	No. of Deaths	%
Heart Disease	674	27.8%
Cancer	516	21.3%
Stroke	188	7.8%
Chronic Lower Respiratory Diseases	129	5.3%
Influenza and Pneumonia	127	5.2%
Accidents	83	3.4%
Alzheimer's Disease	79	3.3%
Atherosclerosis	43	1.8%
Nephritis	35	1.4%
Chronic Liver Disease and Cirrhosis	32	1.3%
Homicide	31	1.3%
Diabetes	27	1.1%
Congenital Malformations	22	0.9%
Perinatal Conditions	16	0.7%
Suicide	14	0.6%
All Other Causes	408	16.8%
<b>TOTAL</b>	<b>2,424</b>	<b>100.0%</b>



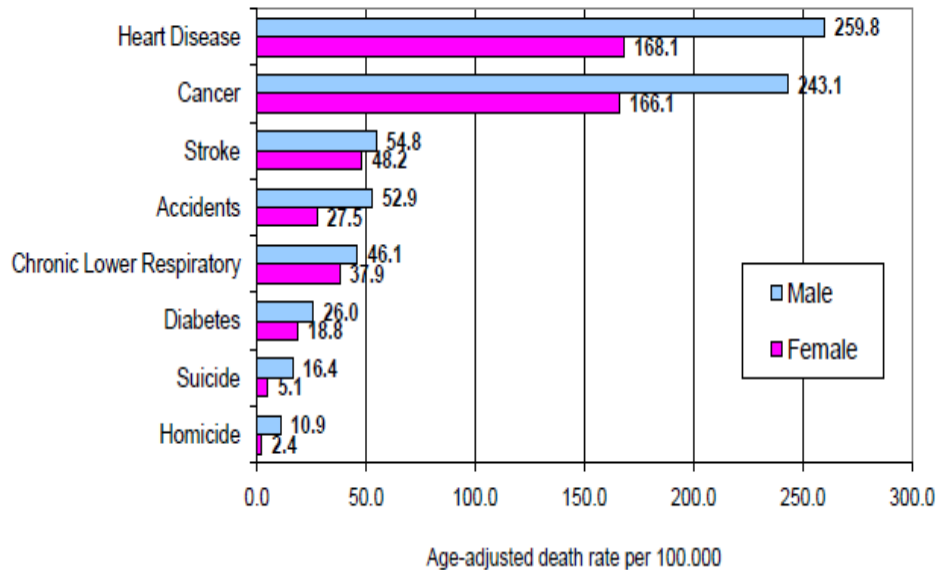
# Winnebago County Deaths 2005 - 2007 Compared To 1995 - 1997



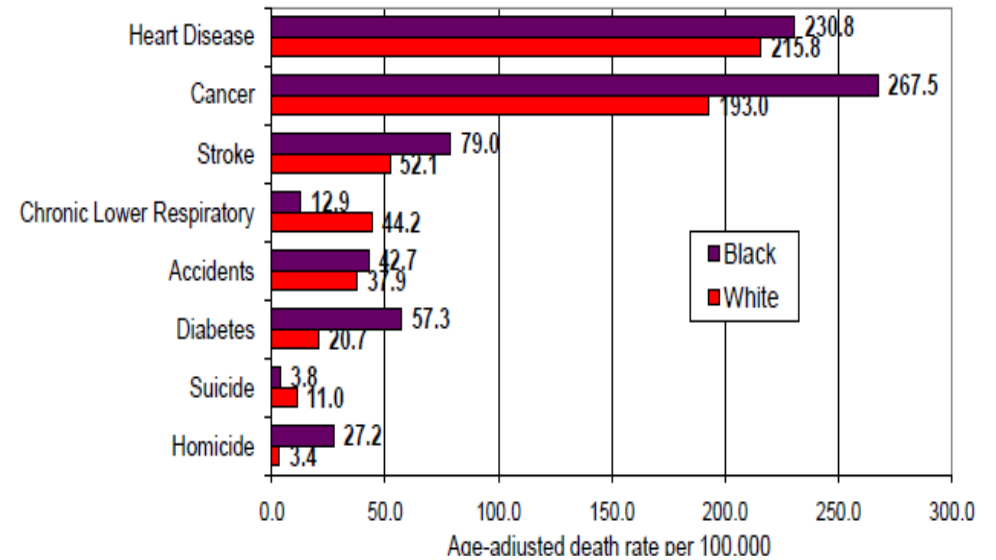


# Winnebago County Age Adjusted Deaths

WINNEBAGO COUNTY  
AGE-ADJUSTED DEATH RATES FOR SELECTED CAUSES  
BY GENDER: 2004-2006

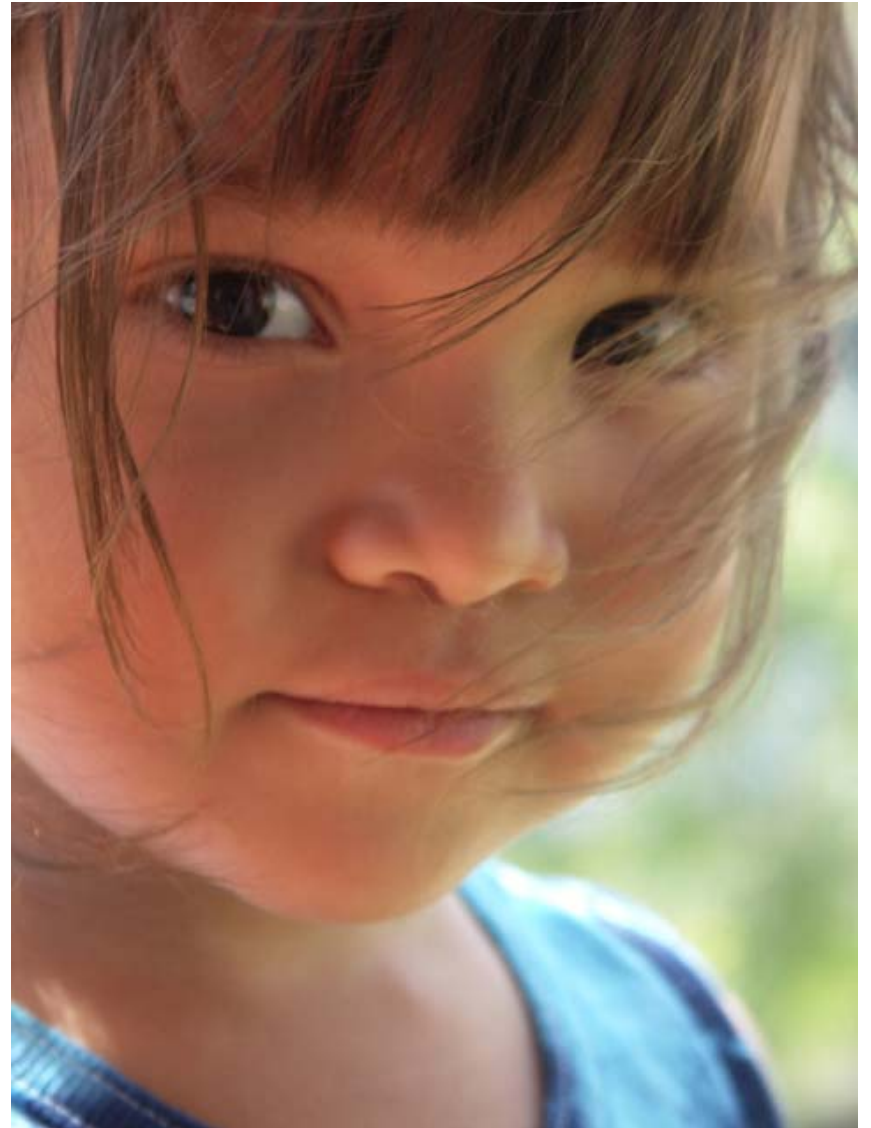


WINNEBAGO COUNTY  
AGE-ADJUSTED DEATH RATES FOR SELECTED CAUSES  
BY RACE: 2002-2006



# Services Offered

- Center for Family Health Services
- Center for Health Protection and Promotion
  - Selected Reportable Diseases
- Center for Health Protection and Promotion
- Center for Environmental Health Improvement
- Center for Management and Support Services
- Winnebago County Health Department Map
- Contact Us



# Center for Family Health Services

Promotes childhood, adolescent and limited adult immunizations, well-child assessments and screening, comprehensive medical and mental health services for children. Provides women's health services including family planning services, diagnosis and treatment of sexually contracted infections and cancer screening.

## Blackhawk Park School-Linked Health Center

Comprehensive medical services available to all students enrolled in Winnebago County and their siblings age 18 years and younger. Additionally, mental health counseling services (partnership with Janet Wattles) offered to students enrolled in the following schools: Beyer, Kishwaukee, Nelson, Lathrop, Washington, King, Fairview, and Head Start. Blackhawk Housing resident children are also eligible for services.

- Clients Served: 944
- Number of Immunizations: 514
- School-Linked Mental Health Visits: 1,262

## Alcohol, Tobacco and Other Drug (ATOD) Prevention:

The ATOD Comprehensive Prevention and Drug Free Communities programs increase awareness of the effects of underage ATOD use by implementing best practices and policies in the schools and the community. Strategies used by media campaigns, coalition building, activities that promote academics and direct service programs to students.

- Number of Students who received ALL STARS ATOD prevention programming: 335
- Number of people (youth & adults) affected by all services: 1,033

## Immunizations/Well-child Assessments

Immunizations for children up to 18 years old/Limited adult vaccines.

- Immunization services: 3,001
- Pediatric well-child assessments: 38

## Carrie Lynn Medical Exams

Provides physical and sexual abuse exams for children that have been referred by DCFS.

- Client exams: 17



Winnebago County Health Department staff members Geri Alten and Joyce Bass both received the Women of Achievement Award at the 29th YWCA Leader Luncheon.

# Center for Family Health Services

Promotes childhood, adolescent and limited adult immunizations, well-child assessments and screening, comprehensive medical and mental health services for children. Provides women's health services including family planning services, diagnosis and treatment of sexually contracted infections and cancer screening.

## **Family Case Management**

Supportive services to pregnant women and infants up to the age of one. Services ensure that all families have access to and are receiving necessary community referrals. Family Case Management is offered at the following locations: Division Street, Salvation Army Millennium Center, Life Center, and Sandcastle Center in South Beloit.

- Total Case Load: 8,696
- Number Served: 8,552

## **Women, Infants & Children (WIC) (Supplemental Nutrition Program)**

Supplemental food program for pregnant women, infants and children up to five years of age.

- Total Case Load: 8,415
- Clients: 14,799
- Total Visits: 40,612

## **Healthy Child Care Illinois-Child Care Consultant**

Provides education on all health and safety issues to childcare providers, families and children in child care setting. Links families with children in child care setting to appropriate community resources.

- Number of Technical Assists: 400
- Number of Consultations: 50
- Number of Providers and Families Reached: 500

## **Lead**

Screening, testing, education and follow-up.

- Lead tests performed in the WIC department: 647

## **Prevention Initiative**

Early childhood education for the Rockford School District #205 block grant. The grant includes funding for intensive case management services through preventive initiative.

- Number Served: 41 children from 35 different families received services.

## **KidCare**

Enrollment in State health insurance program for children of eligible families.

- Applications initiated for medical insurance coverage: 410

# Center for Family Health Services

Promotes childhood, adolescent and limited adult immunizations, well-child assessments and screening, comprehensive medical and mental health services for children. Provides women's health services including family planning services, diagnosis and treatment of sexually contracted infections and cancer screening.

## Social Work/Mental Health

Support services for Health Department clients, including: Neighborhood Environmental, and community referrals.

- Number Served: 461

## Health Works

Ensures necessary, quality health care services for foster children in the nine northwest counties of Illinois.

- Children Served: 1,439

## Teen Parent Services

TPS provides enhanced and integrated case management services to teen parents and their children. The program offers referrals to help meet the students needs, provides education and helps achieve their goals by graduating from High School or getting their GED Certificate.

- Number Served: 356 Teens  
112 Graduates



## Teen Pregnancy Prevention Grants

The Illinois Subsequent Pregnancy Project, or H.U.G.S. (Helping Urge Great Successes). The program offers the Health Department the opportunity to provide education, support, and encourage self-esteem in order to help prevent a subsequent pregnancy.

- Number Served: 30 Girls  
536 Community Members

The Teen Pregnancy Prevention Primary Grant "THINK" Group allows us to provide education on a variety of topics relating to the health and responsibility of middle school students. The program targets a selected group of middle school students who meet for weekly group sessions held at three area middle schools during school hours and is for teen boys and girls.

- Number Served: 146 Girls & 60 Boys  
546 Community Members

# Center for Family Health Services

Promotes childhood, adolescent and limited adult immunizations, well-child assessments and screening, comprehensive medical and mental health services for children. Provides women's health services including family planning services, diagnosis and treatment of sexually contracted infections and cancer screening.

## Targeted Intensive Case Management

Provides intensive case management support to pregnant women at high risk for a low-birth weight infant; no income criteria.

- Number Served: 105 enrolled/received services
- 65 infants born to TIP clients
  - 61 births weighed more than 5lbs. 8 oz.
  - 93.8% of TIP births were normal birth weight
  - Winnebago County TIP low birth rate was 6.2%

## Genetics

Education and service referral for the families of children diagnosed as having birth defects and genetic disorders.

- Clients received genetic screening: 2107
- 893 (42%) resulting in a positive indicator

## High-Risk Nursing

89% of all referrals received Nursing Case Management (face-to-face) services. All referrals received initial nursing contact and programs discussed with families

- Number Served: 410 maternal high-risk referrals
- 547 HRI/APORS infant referrals received

## Violence Prevention Collaborative

Over 160 formal and informal members from Boone and Winnebago Counties focus on five issues: child abuse, youth violence, partner abuse, elder abuse and community violence. Strategies used to prevent violence and public awareness campaigns:

- Identify coalitions & networks that provide education or services on youth & family violence prevention
- Promote best practices and policies
- Determine needs & future solutions from accurate reporting of five focus area statistics: child, elder or partner abuse and youth or community violence
- Number of Students who received aggressive behavior prevention programming: 850
- Number of People affected by policy or procedure changes: 22,000

# Center for Health Protection and Promotion

Provides investigation and actions to control communicable diseases

## Sexually Transmitted Diseases

Confidential diagnosis and treatment of sexually transmitted diseases.

- Total Visits: 5,602

## HIV Counseling and Testing

Anonymous and confidential HIV counseling and testing.

- Number of HIV Tests: 3,301

## TB Care Program

A referral site for skin test positive and active TB cases in Winnebago County.

- Total Number of People Served: 1,931

## Ryan White Programs

Medical case management providing assistance to individuals and families with HIV/AIDS, including medical and dental care, housing, nutrition and transportation.

- Number of People Served: 411

## Refugee Screening Program

Health screening, examination and referrals.

- Number of People Screened: 247

## Communicable Diseases

Investigation and follow-up for reportable communicable diseases.

- Total Cases: 625



# Selected Reportable Diseases in Winnebago County

## 2008 Numbers (October '08—September '09)

AIDS .....	22	Hepatitis C (acute).....	2
AIDS (accumulated from 1985).....	544	Hepatitis C (chronic).....	334
Bacterial Meningitis.....	4	Herpes Simplex.....	176
Blastomycosis.....	0	Histoplasmosis .....	2
Cervicitis .....	808	HIV .....	16
Chlamydia.....	1,692	Legionnaires Disease.....	10
E Coli 0157 H75.....	5	Lyme Disease.....	28
Giardia .....	38	Non-gonococcal urethritis.....	666
Gonorrhea.....	888	Pertussis .....	26
Group A Strep.....	17	Salmonella.....	59
H1N1 Influenza 2009.....	68*	Shigella .....	28
Hepatitis A .....	5	Syphilis.....	11
Hepatitis B (acute) .....	12	Tuberculosis.....	7
Hepatitis B (chronic) .....	33	West Nile Virus.....	0

\* Influenza pandemic year (April 2009 to April 2010) cases totaled 256

Note: Each reported case requires follow-up interviews, where necessary case contact follow-up, prophylactic treatment resulting in >4000 contacts.



# Center for Health Protection and Promotion

Promotes childhood, adolescent and limited adult immunizations, well-child assessments and screening, comprehensive medical and mental health services for children. Provides women's health services including family planning services, diagnosis and treatment of sexually contracted infections and cancer screening.

## Health Promotion

Promotes health and wellness within our community through awareness, education, screenings and adult immunizations.

- Number of Screenings/Immunizations: 18,001

## International Travel Consultations:

Education and immunizations for those going to foreign countries.

- Number of Immunizations: 3,031

## Oral Health

Seeks to reduce the incidence of oral disease through education, preventive dental services in school-based settings and by addressing access to care issues.

- Number of people served: 21,311

School-based preventive dental services include: exams, cleanings, fluoride varnish treatments and the application of dental sealants on income eligible children.

- Number of Exams: 15,538
- Number of Sealants: 12,590
- Number of Cleanings: 11,075
- Number of Fluoride Varnish Treatments: 11,403

## Women's Health

Gynecological services for women. Breast and Cervical Cancer screening.

- Women's Health Clients: 4,236
- Breast & Cervical Screening: 1,272
- Stand Against Cancer Clients: 75

## Audio-Visual Screening

Provides vision and hearing screening to all children in preschools, daycare centers and private and parochial schools. Services detect vision/hearing problems that otherwise might go undetected.

- Number of Vision Screening: 10,551
- Number of Hearing Screening: 10,176

## Black Male Health

This program provides educational information to black males, regarding lifestyle changes in order to reduce health risks. Black males rank last in life expectancy and experience elevated morbidity and mortality. This program also includes prostate cancer education and screening.

- Number of People Served: 6,139
- Number of Materials Distributed: 5,136



Black Male Health  
Community Action  
Team Members

# Center for Environmental Health Improvement

Inspects, investigates and monitors issues regarding water, food, lead safety and nuisance control.

## Neighborhood Environmental

Regulation of hotels and motels, pest control and nuisance resolution. Compliance with minimum housing health codes, lead paint inspections and education on home health hazards.

- Number of Inspections: 11,870

## Laboratory

Laboratory testing for Health Department Programs, municipalities and the general public. Major testing includes water and pollen counts.

- Number of Environmental Tests: 8,622
- Number of RPR (STD tests): 4,100

## Pollution Control

Issues and inspects septic systems, tests water wells and monitors air, groundwater and land quality. Periodically evaluates and updates septic codes as needed. Participates with IDPH, IEPA and USEPA on environmental quality and compliance issues.

- Number of Inspections: 1,240

## Public Facilities Sanitation

Plan review, inspection and regulation of food establishments, tanning facilities, body art facilities, temporary events, summer food programs, and public pools. Sanitarians perform routine food establishment inspections as well as investigate complaints about incidents of possible food-borne illnesses.

- Number of Inspections: 5,109

## West Nile Virus (WNV)

West Nile Virus was reported in Winnebago County in June of 2009. An active surveillance and community education effort was continued throughout the summer. Through the efforts of the department staff and community cooperation, the county had no human confirmed cases of West Nile Virus. Seven Gravid traps were placed throughout Winnebago County. 80 calls were received from the general public with questions regarding WNV. 5 dead birds were sent to the State lab for analysis with 1 testing positive. 30 pools of mosquitoes were collected, with none testing positive.

## Tobacco Control Programs

These programs focus on delivering information on the risks and issues around tobacco use, and assisting smokers to quit. Adult coalition members, law enforcement and REALITY (high-school aged) youths assist staff in delivery of these educational and social policy efforts. Enforcement efforts around the Smoke-Free Illinois Act and reducing tobacco (and alcohol) sales to minors are also provided throughout Winnebago County on a regular basis.

- Duplicated number of youths/adults delivering education and tobacco control programs, including cessation services: 291
- Unduplicated number of people receiving direct education/informational or cessation services: 5,139
- Pieces of tobacco information distributed: 3,650
- Number of responses to SFIL Act complaints: 427
- Checks on tobacco or alcohol sales to minors: 632

# Center for Management and Support Services

Provides: Finance, Information Technology, Emergency Preparedness, Quality Assurance, Vital Records, Supportive Services, and Facility Management, to the Department.

## Public Health Emergency Preparedness

Public Health Emergency Preparedness conducts public health emergency planning, provides emergency training for Health Department employees and facilitates community response efforts.

- Submitted the new Emergency Operations Plan to NACCHO Project Public Health Ready Recertification Committee. The WCHD Emergency Operations Plan was one of only four plans recognized for recertification by Project Public Health Ready in the first round.
- Completed updating of the Bioterrorism Response Plan and the Pandemic Influenza Response Plan. This included forging both plans into the new All Hazards Emergency Operations Plan.
- Conducted four All Staff trainings related to public health emergency response (total - 1,440 personnel hours).
- Initiated the creation of the Special Needs Advisory Panel of Winnebago County with 17 other community agencies.
- Facilitated ten meetings of the Rockford Health Council.
- Facilitated the beginning of response operations in reference to the H1N1 pandemic.

## Vital Statistics

Birth and Death Certificates and burial permits for Winnebago County residents. Official Vital Records Registrar for Winnebago County.

- Number of Birth Certificates Issued: 7,489
- Number of Original Birth Certificates: 4,630
- Number of Death Certificates Issued: 23,109
- Number of Original Death Certificates: 2,646

## Medical Reserve Corps

The purpose of the WCHD Medical Reserve Corps (MRC) is to recruit, organize, train, empower, utilize and sustain a cadre of volunteer medical professionals and interested others.

MRC goals include: individual, home, workplace and community preparedness; partnership with other agencies for area disaster planning, response and recovery; and increased local awareness through promotion of timely public health initiatives.

There are currently 476 registered MRC volunteers, over 100 registered as “active”. The focus outside of disaster response times is training and exercise with local course offerings. Many opportunities exist through our on-line training initiative, “MRC-TRAIN.”

- 204 MRC and partner agency responders participated in local MRC-conducted or facilitated classroom training opportunities, totaling 587 hours.
- 22 MRC volunteers participated in public health emergency activities (telephone phone bank operations), for a total of 92 hours.
- MRC volunteers conducted MRC classroom training for a total of 48 training hours.
- MRC volunteers and staff attended federally-sponsored Federal Response Team Training and Integrated Medical Response Training for a total of 112 hours.
- Total MRC volunteer service hours (non-training) of 202 hours.

# Winnebago County Health Department Map

## Winnebago County Health Department Locations

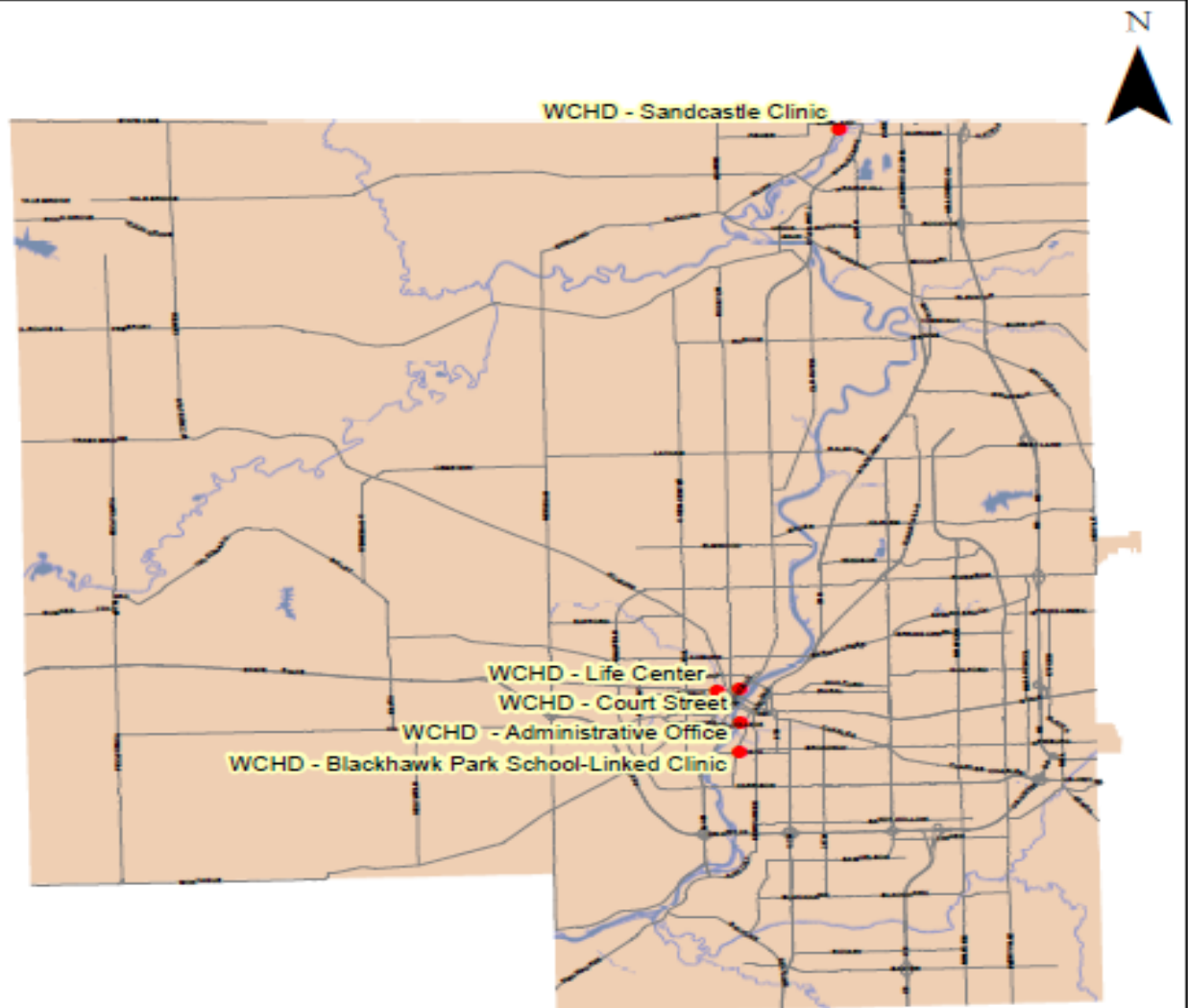
WCHD - Administrative Office  
401 Division St  
Rockford, IL 61104  
815-720-4000

WCHD  
Blackhawk Park School  
Linked Clinic  
330 15<sup>th</sup> Ave.  
Rockford, IL 61104  
815-972-7200

WCHD - Life Center  
921 W. State St  
Rockford, IL 61102  
815-720-4390

WCHD - Court Street  
555 N. Court St  
Rockford, IL 61102  
815-720-4000

WCHD - Sandcastle Clinic  
201 S. Eighth St.  
South Beloit, IL 61080  
815-389-4167



0 1.5 3 Miles

WIN GIS

# Contact Us

This Winnebago County Health Department Services Directory has been developed to help you identify and utilize the various programs offered. Additional information on our services may be obtained by calling 815-720-4000 or any of the following direct telephone lines.

Administration .....	720-4200	Health Promotion.....	720-4250
Center For Environmental Health.....	720-4101	Human Resources.....	720-4212
Center For Family Services.....	720-4300	Immunizations (Children) .....	720-4150
Center For Health Promotion .....	720-4050	Kid Care Applications .....	720-4323
Center For Management and Support Services .....	720-4211	Operations .....	720-4044
Clinical Services.....	720-4150	Oral Health .....	720-4275
Communications & Marketing .....	720-4213	Tuberculosis Clinic .....	720-4091
Disease Control.....	720-4050	Violence Prevention Collaborative.....	720-4261
Emergency Preparedness.....	720-4217	Vision & Hearing Screening .....	720-4266
Epidemiology.....	720-4215	Vital Records .....	720-4020
Flu Clinics.....	720-4274	WCHD Community Health Information Line .....	720-4242
General Information .....	720-4000	Weed and Seed-Ellis Heights.....	967-0067
HIV Testing .....	720-4066	Weed and Seed-Kishwaukee Corridor .....	ext 15, 967-0413
Illinois Breast/Cervical Program .....	720-7250	Women's Health.....	972-7400
		W.I.C. (Women, Infants & Children) .....	720-4369



**Hours of Operation:** Winnebago County Health Department is open Monday through Friday from 8:00 am - 5:00 pm except on holidays. **Some clinics have extended hours.** Call individual programs for appointment or schedule. Visit our website at: [www.wchd.org](http://www.wchd.org).