



Winnebago County Health Department



Weekly Influenza Surveillance Report CDC Week 10 March 5-12 2011

In Brief:

Mortality

Confirmed deaths from Pneumonia/Influenza Week 10: **4**

Percent of deaths due to Pneumonia/Influenza: **8.89%**

Baseline—**1.8%**, Epidemic—**7.9%**

School Attendance

Sentinel Attendance – All Schools – Week of 03/7 – 03/11: **93.14%**

Influenza-Like Illness Surveillance

Sentinel Site ILI rate (average of 3 sites participating)—week ending March 12th: **3.27%**

Pneumonia Hospital Admissions

Week Ending March 12th: **31**

Previous Week Ending March 5th: **30**

Note: Numbers include 2 hospitals and are one week behind due to reporting methods.

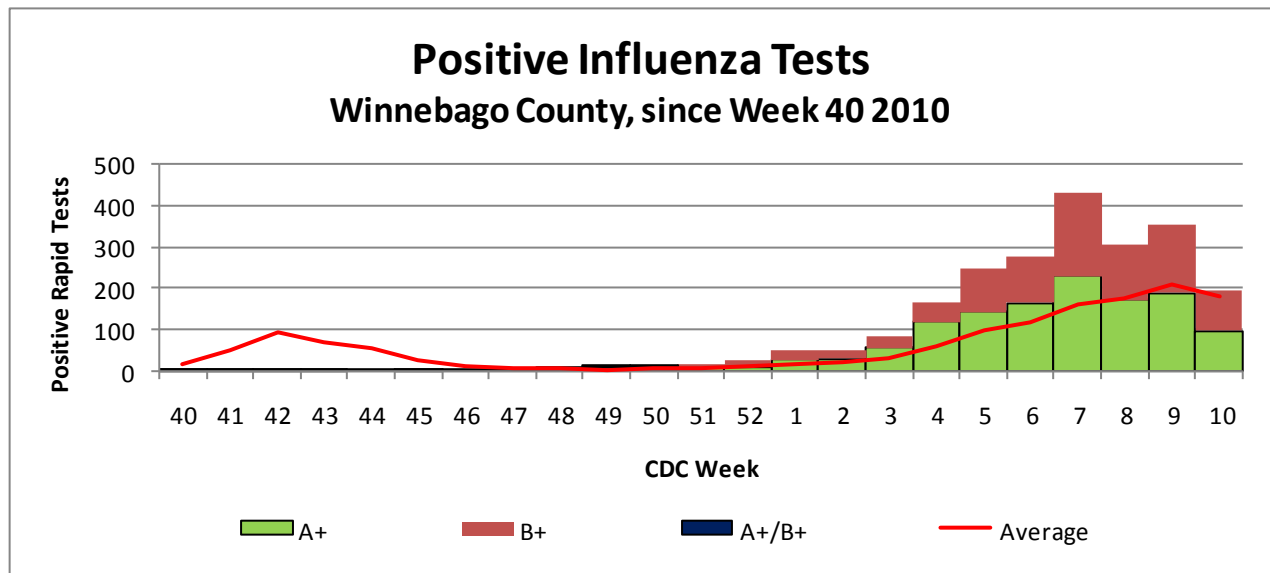


Figure 1 displays the current number of rapid flu cases reported to our department for the 2010-2011 flu season (broken down by influenza sub-typing) compared to a 4-year historical average (the red line). Ending numbers for CDC week 9 in Winnebago County show 2341 total positive rapid flu reported for this flu season. We are currently above the 4-year average for flu cases in our county. The historical average for Week 10 is currently 178.75 while our reported cases show 196 total for this week. We are continuing to see a decrease in positive cases reported in the community for the last several weeks.

Weekly Percentage of Visits as Identified by Essence

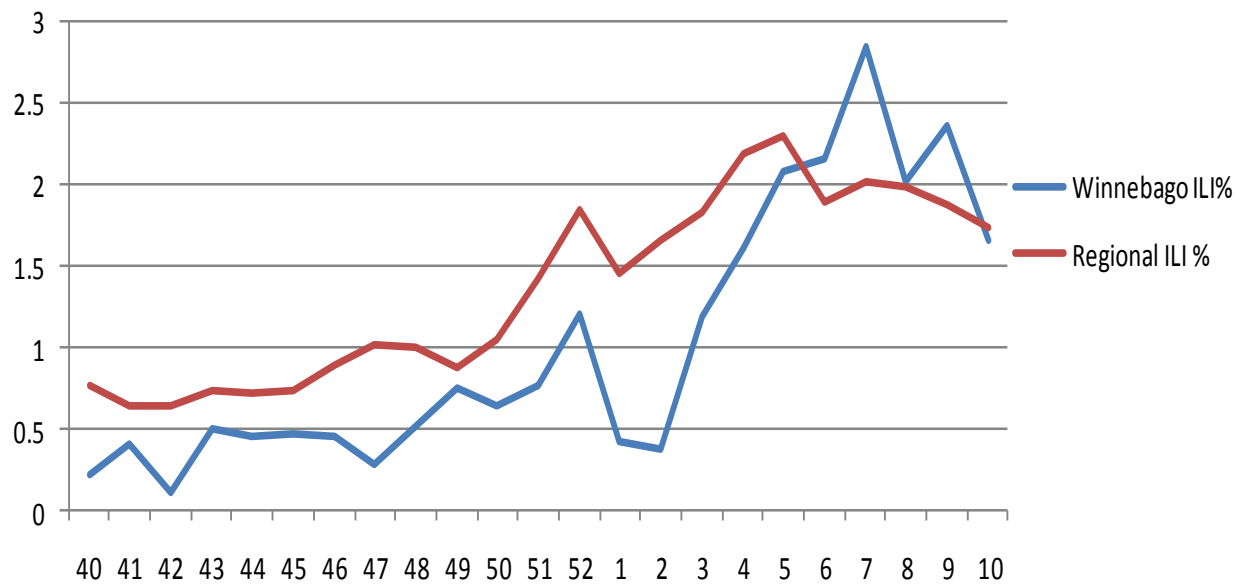


Figure 2 displays the weekly percentage of ILI as identified by Essence. The blue line shows percentage of ILI Emergency Department visits in Winnebago County from our two participating hospitals and the red line shows the regional ILI percentage for all counties participating in the Essence Syndromic Surveillance System. As of CDC week 10 Winnebago County and regional ILI rates have decreased. Our county is slightly below the regional level for percentage ILI (Winnebago is at a rate of **1.65%** while the region overall was **1.73%** for week 10).

Winnebago County ILI Activity Flu Season 2010-2011 (CDC Weeks 40-25)

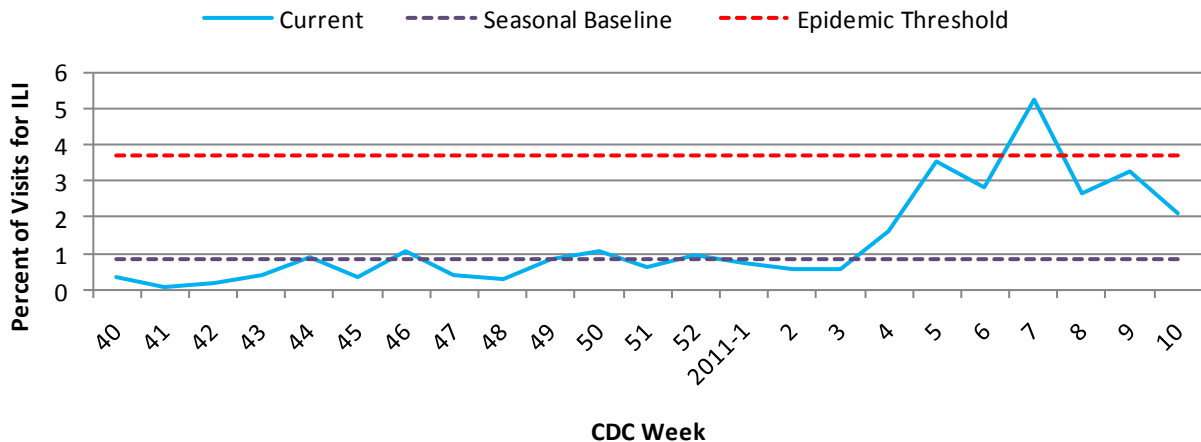


Figure 3 is the representation of all visits from our sentinel sites not participating in Essence for Influenza-Like Illness, or ILI. Of our three sentinel sites, only one has reported an ILI % for week 9 of **2.49%** ILI for week 10. The percent rate for week 10 2011 is up slightly from the average of 2.09%. Our weekly average is above seasonal baseline of 0.84% but below the epidemic threshold of 3.71%.

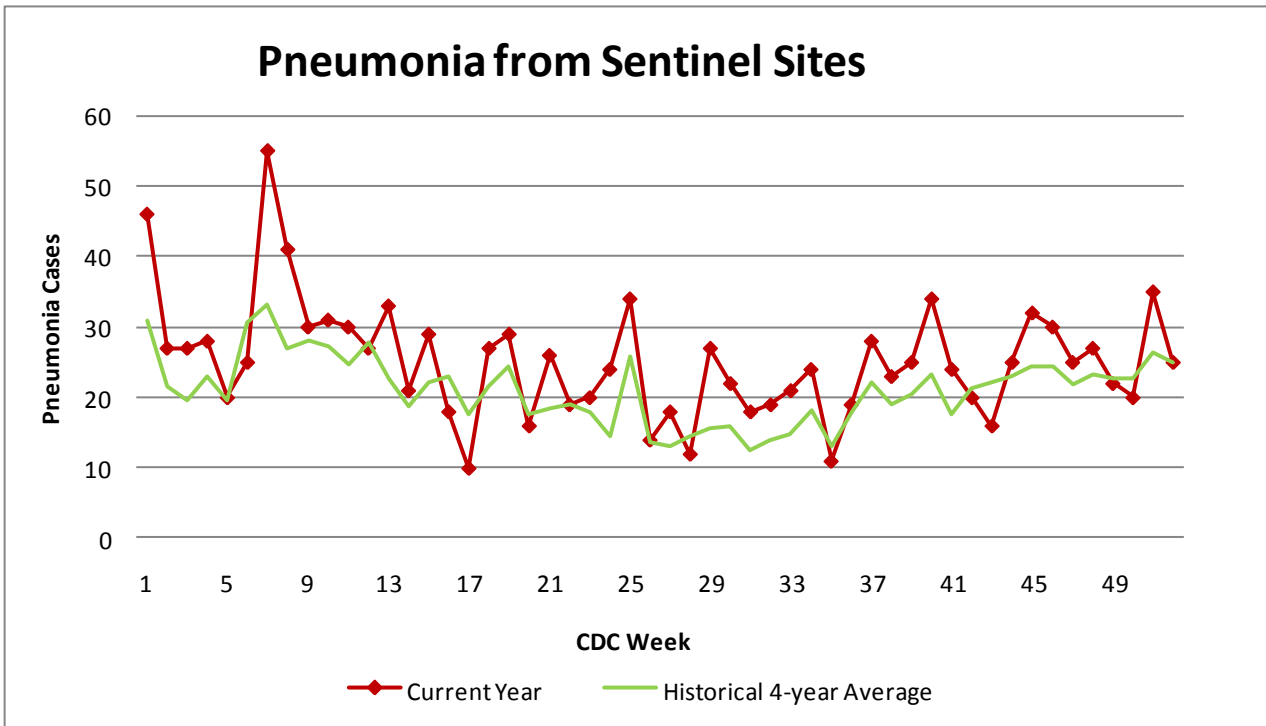


Figure 4 compares the current number of pneumonia hospital admissions (red line) against the 4-year historical average (the green line). The first 5 weeks of the year reported above the historical average and dropped slightly below the 4-year average in weeks 6. Week 7 –10 brought us back over the 4-year average. For CDC week 10 a total of 31 cases reported coming in right above the 4-year historical average of 27.25. Numbers for CDC week 9, 10 and 11 for 2011 are still arriving.

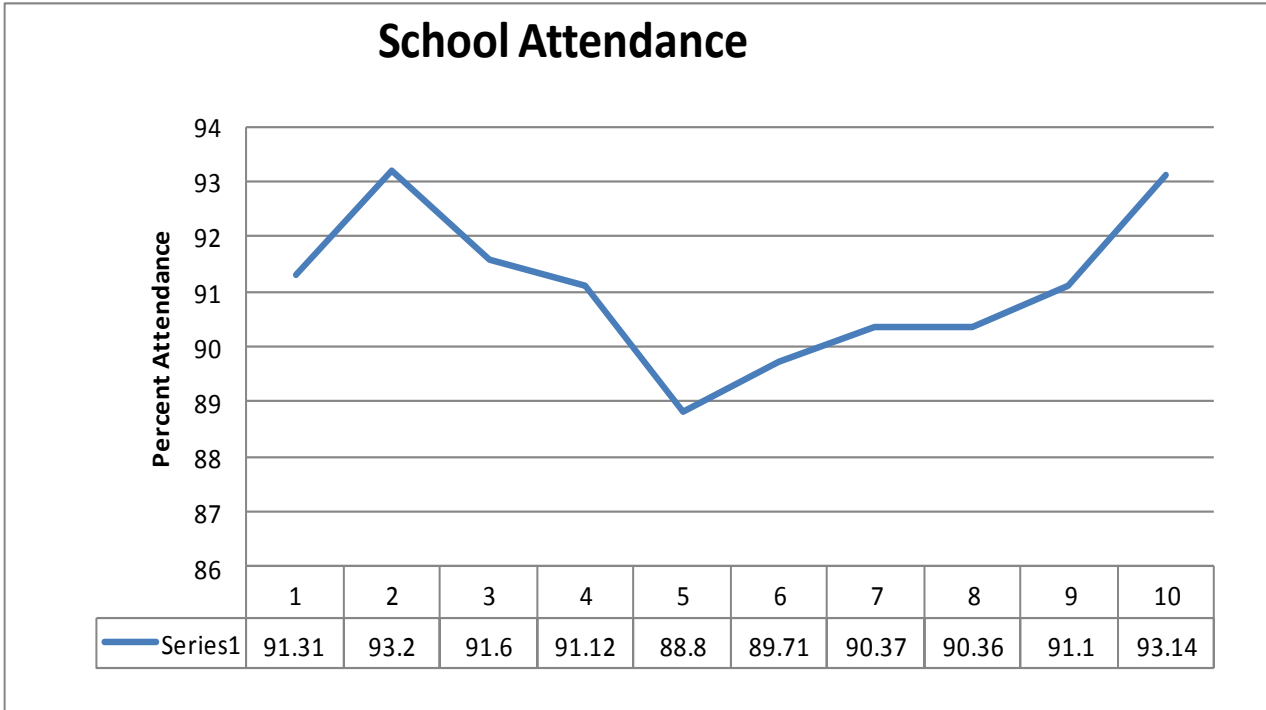


Figure 5 shows school attendance to date in 2011. for the first 5 weeks of the year, school attendance was on a slight decrease for RPS District 205 but was on the rise in weeks 6, 7, 8 and 9. For CDC week 10, current attendance rate continued to increase above 90% at 93.14%

Number of confirmed H1N1 influenza cases to date in Winnebago County (2011): 3 (IDPH)

Number of confirmed Novel H3N2 influenza cases to date in Winnebago County (2011): 5 (IDPH)

Number of confirmed Novel Influenza B cases for to date in Winnebago County (2011): 6 (IDPH)

Outside the County:

Illinois influenza activity (as of week 10):

Regional

ILI Activity Level (Influenza like Illnesses reported)

Illinois is **MINIMAL** on the scale

United States influenza activity (as of Week 10):

Widespread activity in 31 States

Regional activity in 15 states

Local activity in Washington DC, Oregon and 3 states

Sporadic activity in Guam, the U.S. Virgin Islands and North Carolina

Puerto Rico DID NOT REPORT



Questions/Comments?

Amanda Mehl, MPH
Epidemiologist
Health Promotion and Protection
Winnebago County
Health Department
401 Division Street
Rockford, IL 61104
815-720-4215



Public Health
Prevent. Promote. Protect.