

**Weekly Influenza Surveillance Report
CDC Week 16 April 17-April 23rd 2011**

In Brief:

Mortality

Confirmed deaths from Pneumonia/Influenza Week 16: **3**
 Percent of deaths due to Pneumonia/Influenza: **5.66%**
 Baseline—**1.8%**, Epidemic—**7.9%**

School Attendance

Sentinel Attendance – All Schools – Week of 04/18– 04/22: **91.3%**

Influenza-Like Illness Surveillance

Sentinel Site ILI rate (average of 3 sites participating)—week ending April 23rd:
1.42%

Pneumonia Hospital Admissions

Week Ending April 23rd: **20**
 Previous Week Ending April 16th: **29**
 Note: Numbers include 2 hospitals and are one week behind due to reporting methods.

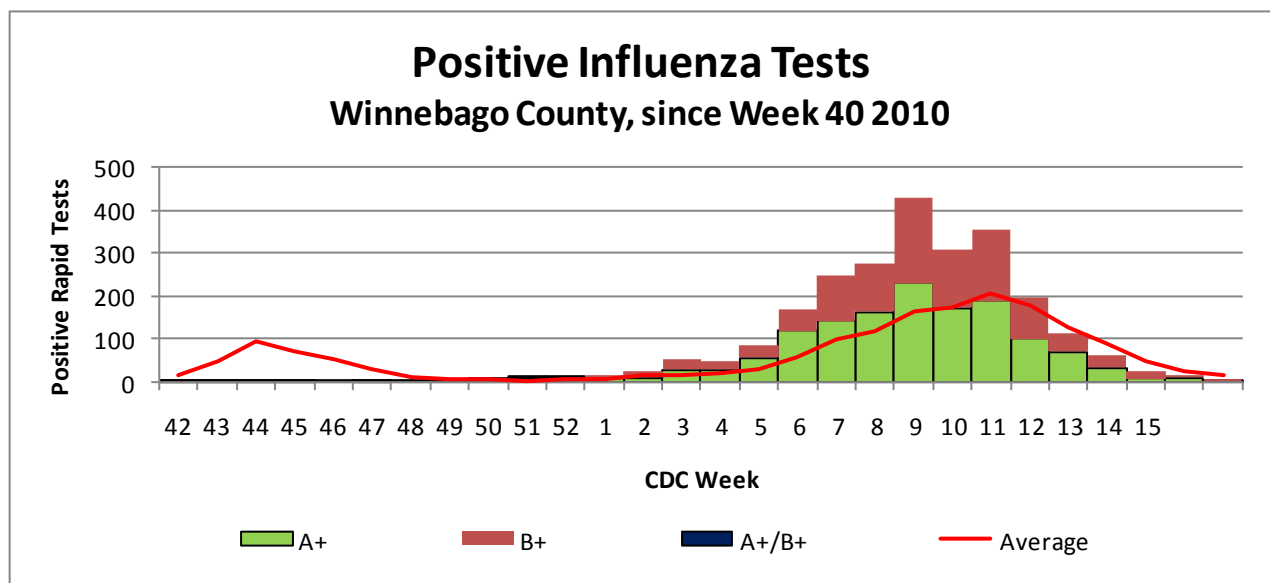


Figure 1 displays the current number of rapid flu cases reported to our department for the 2010-2011 flu season (broken down by influenza sub-typing) compared to a 4-year historical average (the red line). Ending numbers for CDC Week 16 in Winnebago County show 2475 total positive rapid flu reported for this flu season. The historical average for Week 16 is currently 7.25 while we only had one flu case reported for this week.

Weekly Percentage of Visits as Identified by Essence

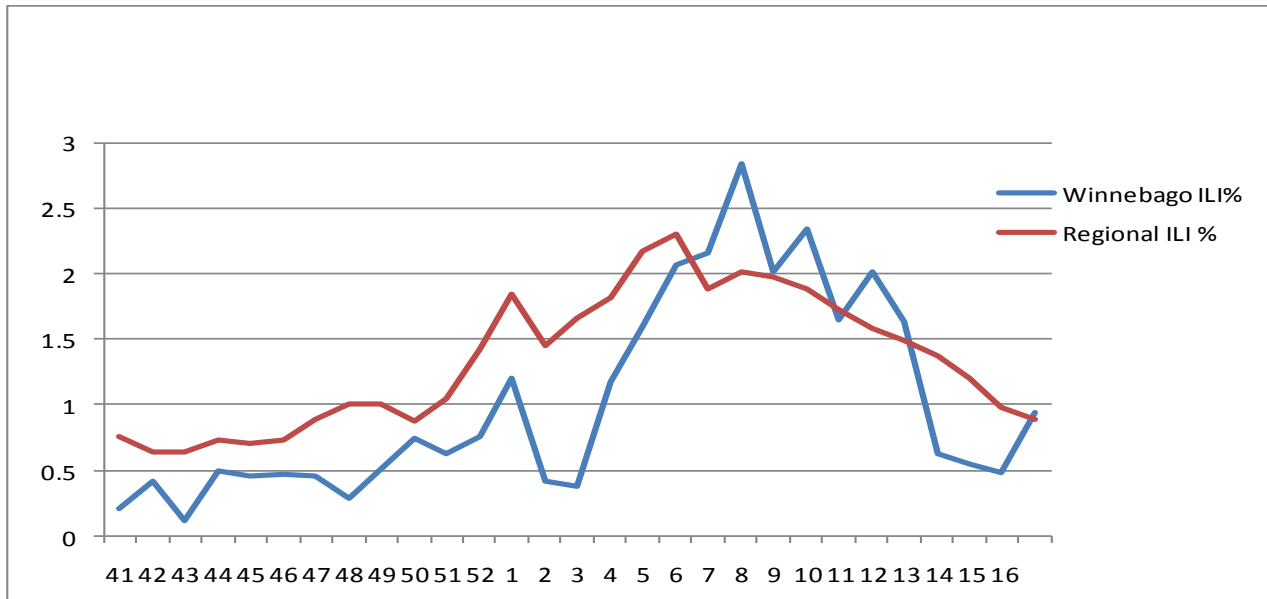


Figure 2 displays the weekly percentage of Influenza-Like Illness (ILI) as identified by the Essence Syndromic Surveillance System. The blue line shows percentage of ILI Emergency Department visits in Winnebago County from our two participating hospitals and the red line shows the regional ILI percentage for all counties participating in ESSENCE. As of CDC Week 16 Winnebago County and regional ILI rates have been steadily decreasing although our county line is up 0.10 from last week. For CDC Week 16, our county is slightly above the regional level for percentage ILI (Winnebago is at a rate of **0.94%** while the region overall was **0.89%** for Week 16).

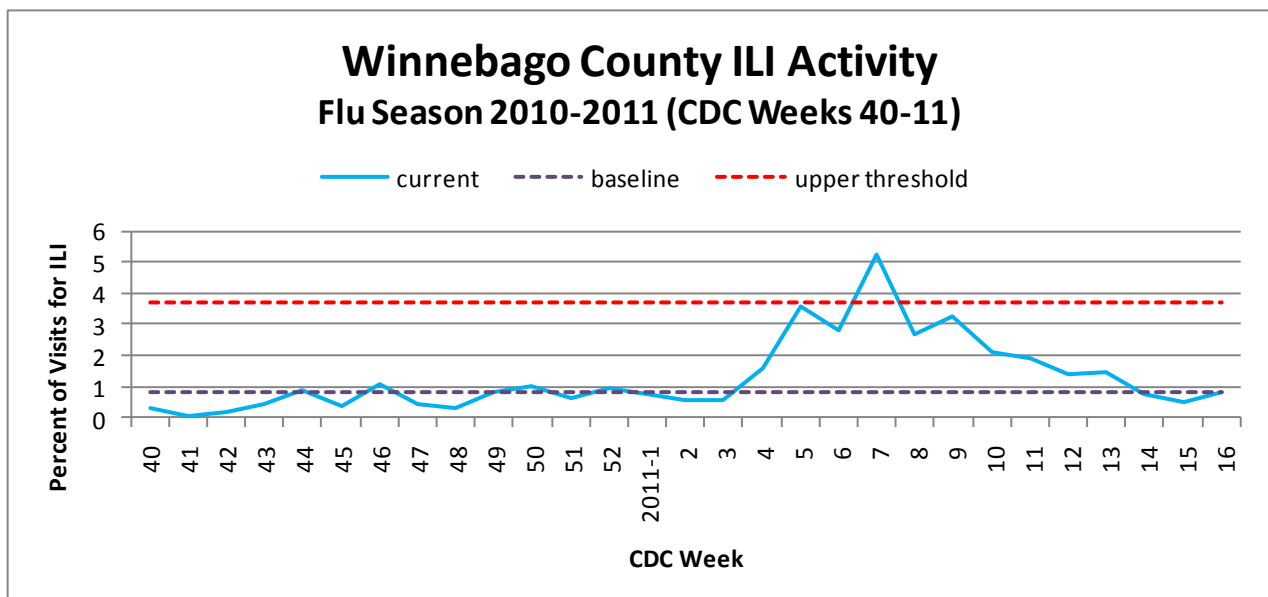


Figure 3 is the representation of all visits from our sentinel sites not participating in Essence for ILI. The average among our three sentinel sites for ILI % for Week 16 of **0.80%**. The ILI percents from our three sentinel sites continues on a steady decrease. Our weekly average is above seasonal baseline of 0.84% but below the epidemic threshold of 3.71%.

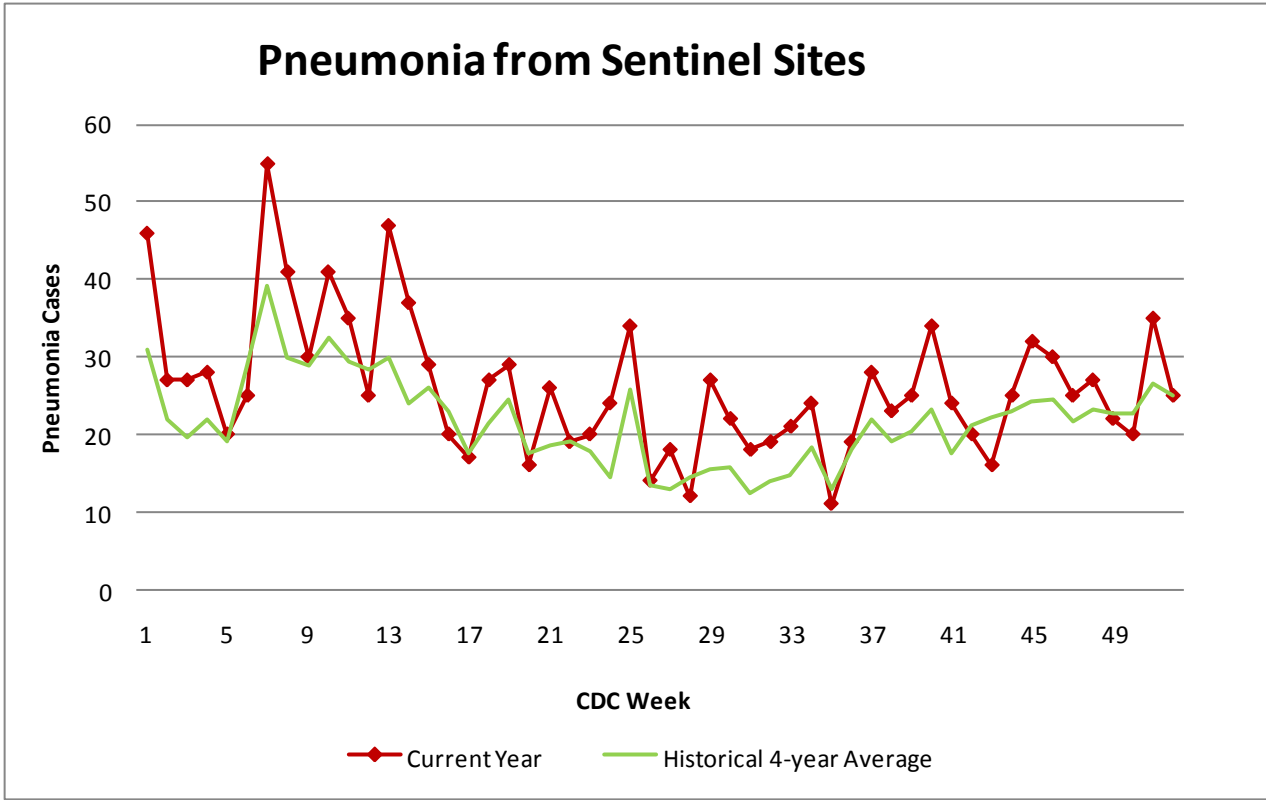


Figure 4 compares the current number of pneumonia hospital admissions (red line) against the 4-year historical average (the green line). The first 5 weeks of the year reported above the historical average and dropped slightly below the 4-year average in weeks 6. Weeks 7 –10 brought us back over the 4-year averages and weeks 11 and 12 came in below the historical average. Weeks 13 and 14 are above the 4-year average. For CDC Week 16 a total of 20 cases reported coming in just under the 4-year historical average of 23. Numbers for weeks 14, 15, and 16 for 2011 are still arriving.

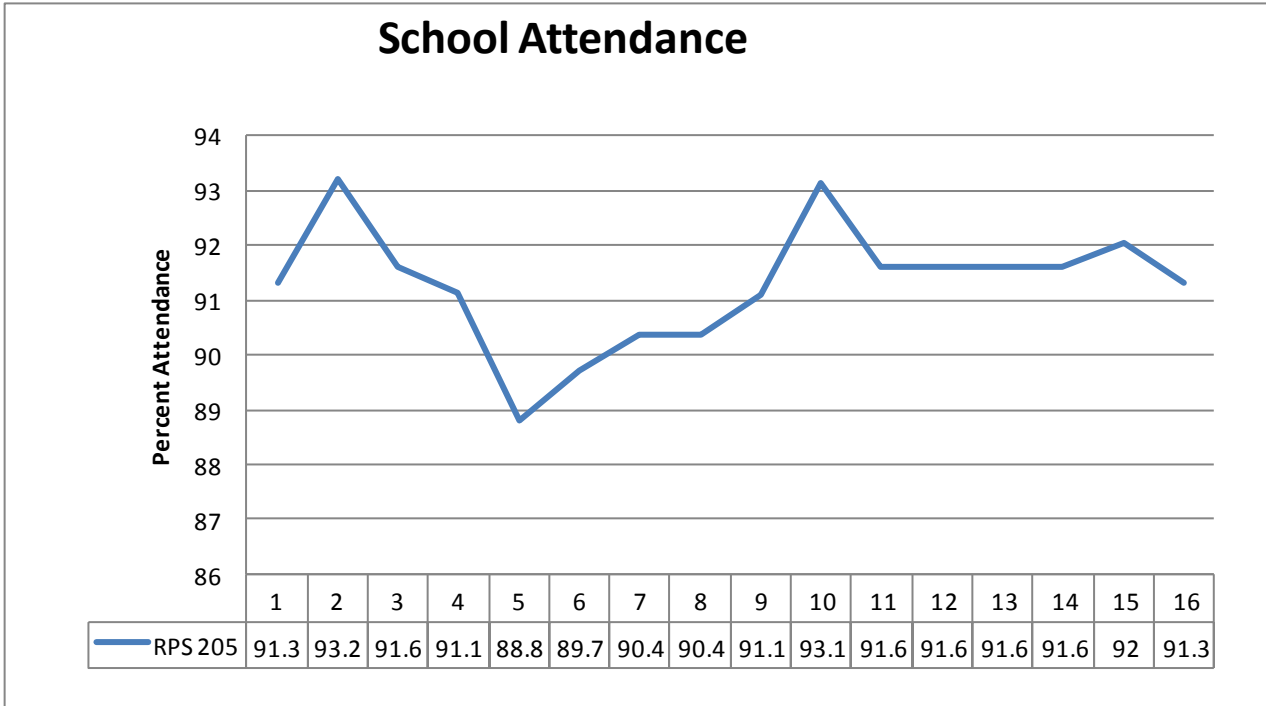


Figure 5 shows school attendance to date in 2011. for the first 5 weeks of the year, school attendance was on a slight decrease for RPS District 205 but has held steadily above 90% for weeks 6-14. For CDC Week 16, school attendance decreased slightly to 91.3%

Number of confirmed H1N1 influenza cases to date in Winnebago County (2011): 3 (IDPH)

Number of confirmed Novel H3N2 influenza cases to date in Winnebago County (2011): 5 (IDPH)

Number of confirmed Novel Influenza B cases for to date in Winnebago County (2011): 11 (IDPH)

Outside the County:

Illinois influenza activity (as of Week 16):

No Reported Activity

ILI Activity Level (Influenza like Illnesses reported)

Illinois is **MINIMAL** on the scale

United States influenza activity (as of Week 16):

No states reported widespread influenza activity

Regional influenza activity was reported in New Hampshire and New York)

Sporadic activity Sporadic influenza activity was reported by Puerto Rico and 33 states

The U.S. Virgin Islands, Guam, and eight states (Arkansas, Delaware, Idaho, Indiana, Kentucky, North Carolina, Rhode Island, and Utah) reported no influenza activity



Questions/Comments?

Amanda Mehl, MPH
Epidemiologist
Health Promotion and Protection
Winnebago County
Health Department
401 Division Street
Rockford, IL 61104
815-720-4215



Public Health
Prevent. Promote. Protect.