



Winnebago County Health Department



Weekly Influenza Surveillance Report CDC Week 21 May 22nd-May 28th 2011

In Brief:

Mortality

Confirmed deaths from Pneumonia/Influenza Week 21: 4

Percent of deaths due to Pneumonia/Influenza: **7.54%**

Baseline—**1.8%**, Epidemic—**7.9%**

School Attendance

Sentinel Attendance – All Schools – Week of 05/23– 05/27: **96.79%**

Influenza-Like Illness Surveillance

Sentinel Site ILI rate (average of 3 sites participating)—week ending May 28th:
0.62%

Pneumonia Hospital Admissions

Week Ending May 28th: **20**

Previous Week Ending May 21st: **34**

Note: Numbers include 2 hospitals and are one week behind due to reporting methods.

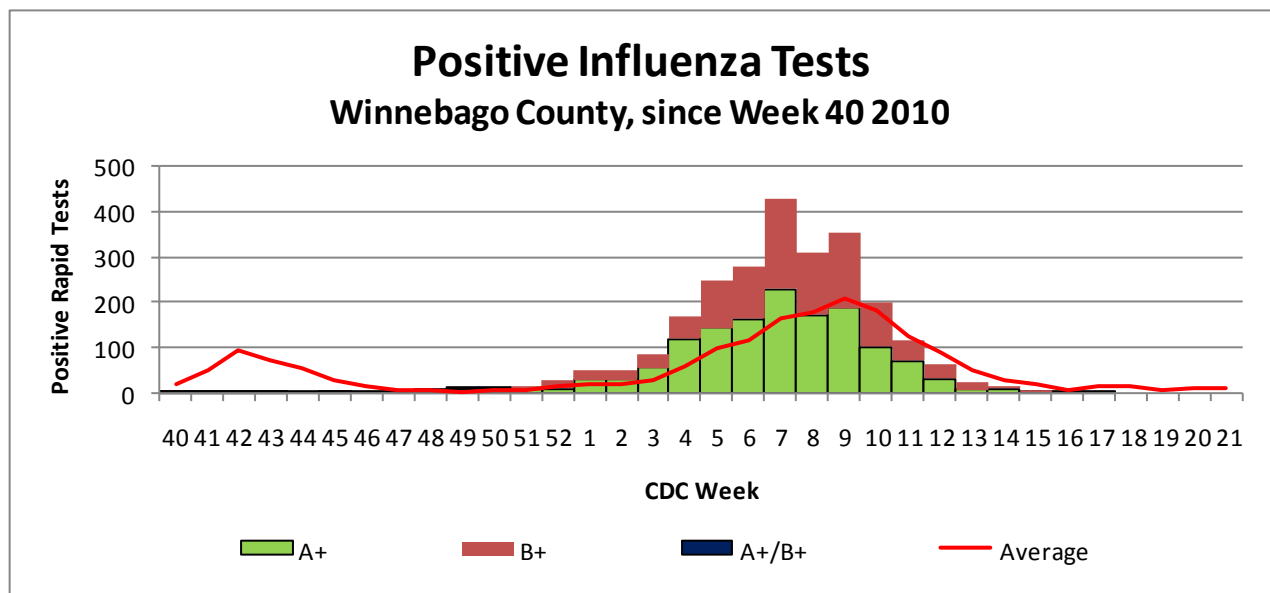


Figure 1 displays the current number of rapid flu cases reported to our department for the 2010-2011 flu season (broken down by influenza sub-typing) compared to a 4-year historical average (the red line). Ending numbers for CDC Week 21 in Winnebago County show 2476 total positive rapid flu reported for this flu season. The historical average for Week 20 is currently 10.5 while once again we had no flu cases reported for this week.

Weekly Percentage of Visits as Identified by Essence

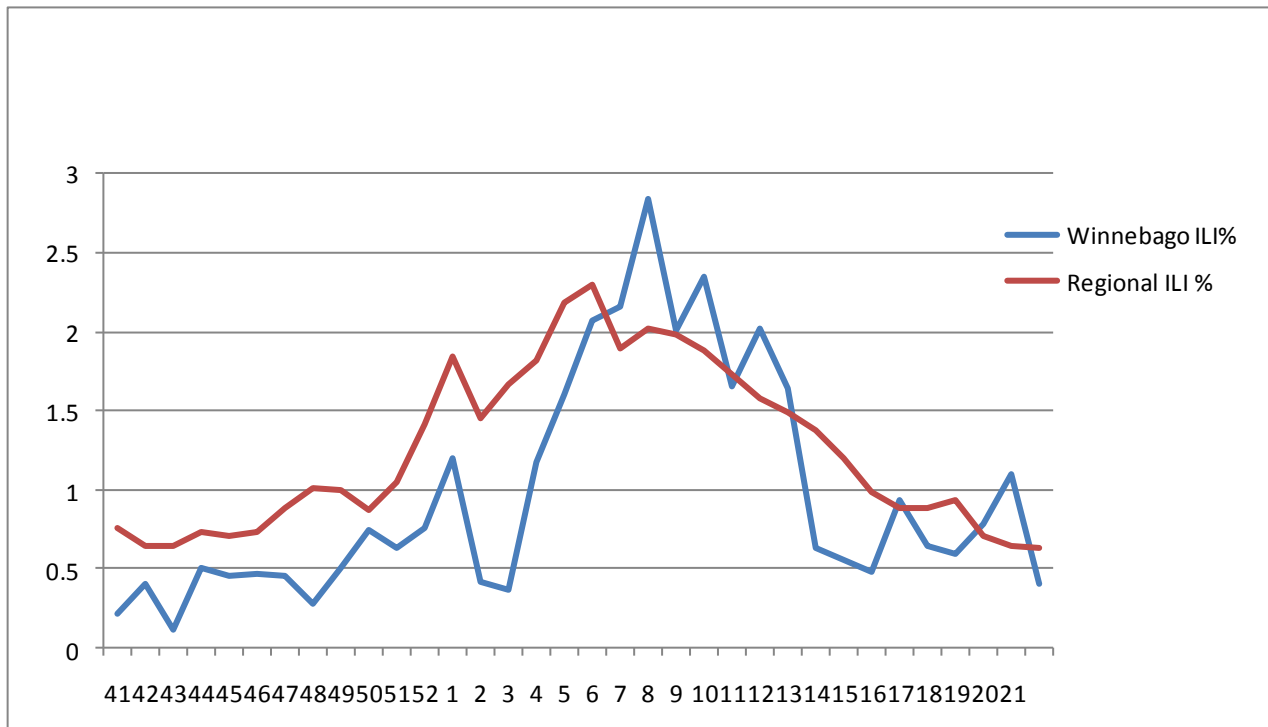


Figure 2 displays the weekly percentage of Influenza-Like Illness (ILI) as identified by the Essence Syndromic Surveillance System. The blue line shows percentage of ILI Emergency Department visits in Winnebago County from our two participating hospitals and the red line shows the regional ILI percentage for all counties participating in ESSENCE. For CDC Week 21, our county is at a rate of **0.41% which is below the regional ILI percent 0.63%** for Week 21.

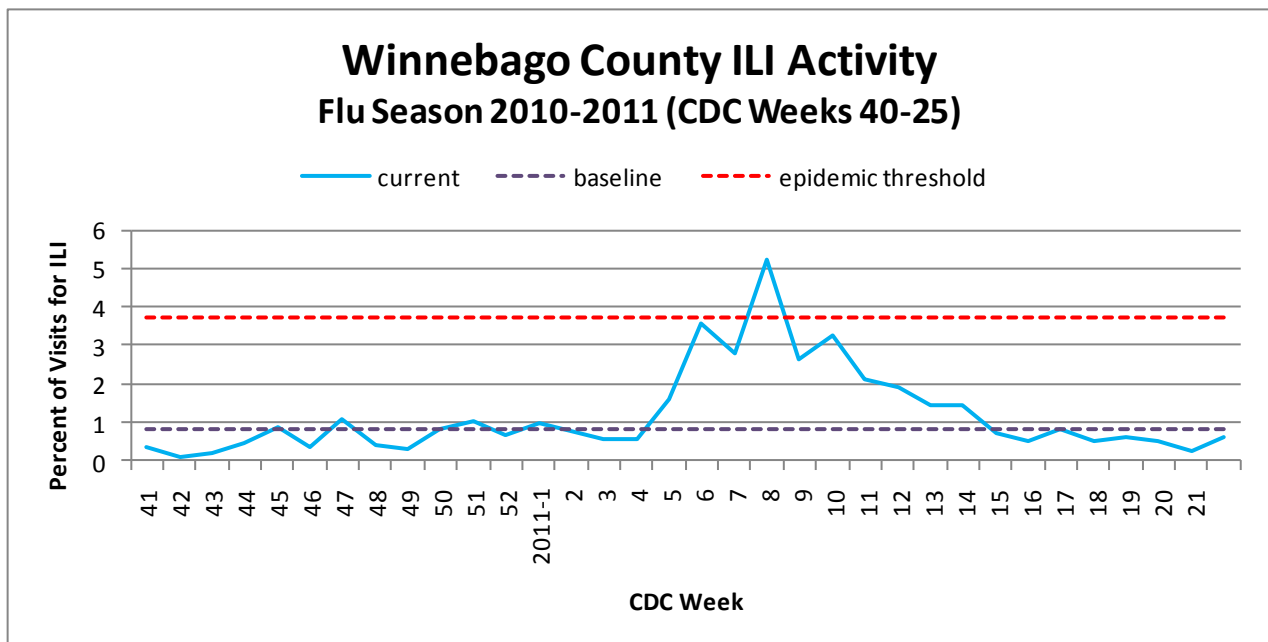


Figure 3 is the representation of all visits from our sentinel sites not participating in Essence for ILI. One site did not report this week because the clinic was closed for Spring Break. The average among our two sentinel sites for ILI % for Week 21 of **0.62%**. The ILI percents from our three sentinel sites continues on a steady decrease. Our weekly average has dropped below the seasonal baseline of 0.84% for the fifth week in a row.

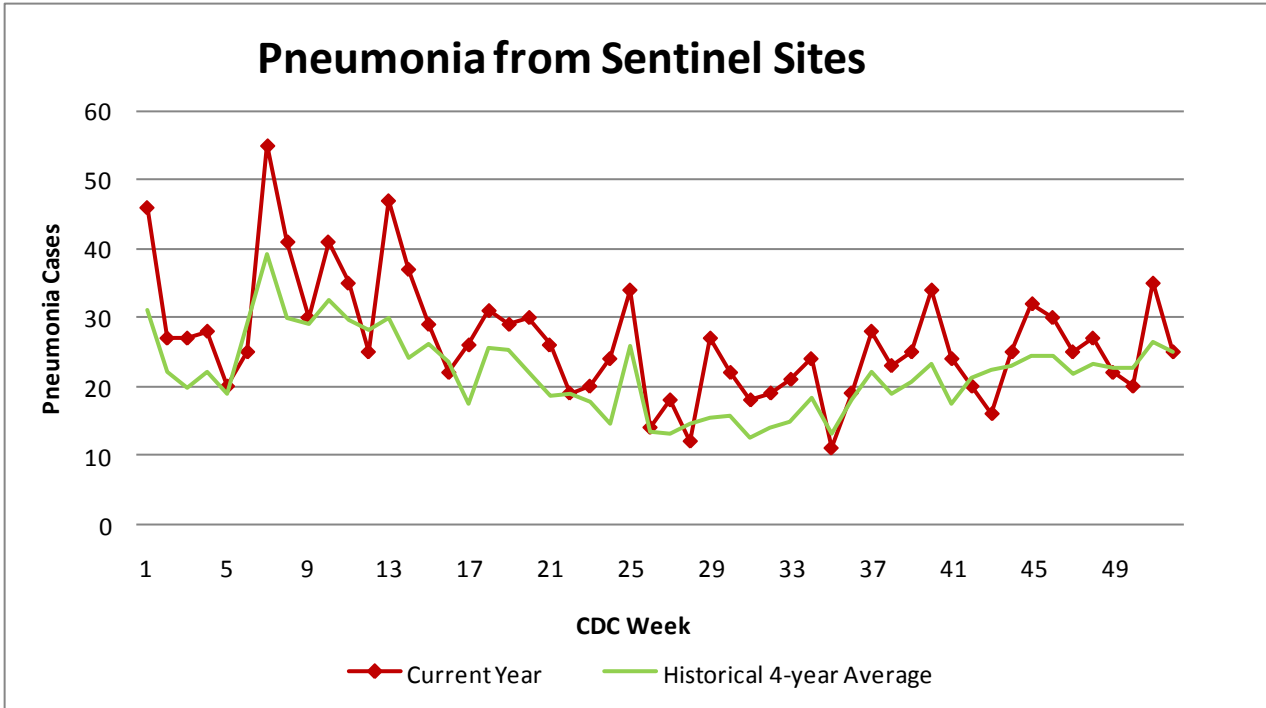


Figure 4 compares the current number of pneumonia hospital admissions (red line) against the 4-year historical average (the green line). The first 5 weeks of the year reported above the historical average and dropped slightly below the 4-year average in week 6. Weeks 7 –11 brought us back over the 4-year averages and week 12 came in below the historical average. Weeks 13, 14, and 15 were above the 4-year average and week 16 was slightly below the 4-year average. CDC Weeks 17,18,19, 20 came in just above the 4-year historical averages and for CDC Week 21, we dropped below the 4-year historical average of 22 with 20 hospital admittances reported. Numbers for weeks 19, 20, and 21 for 2011 are still arriving.

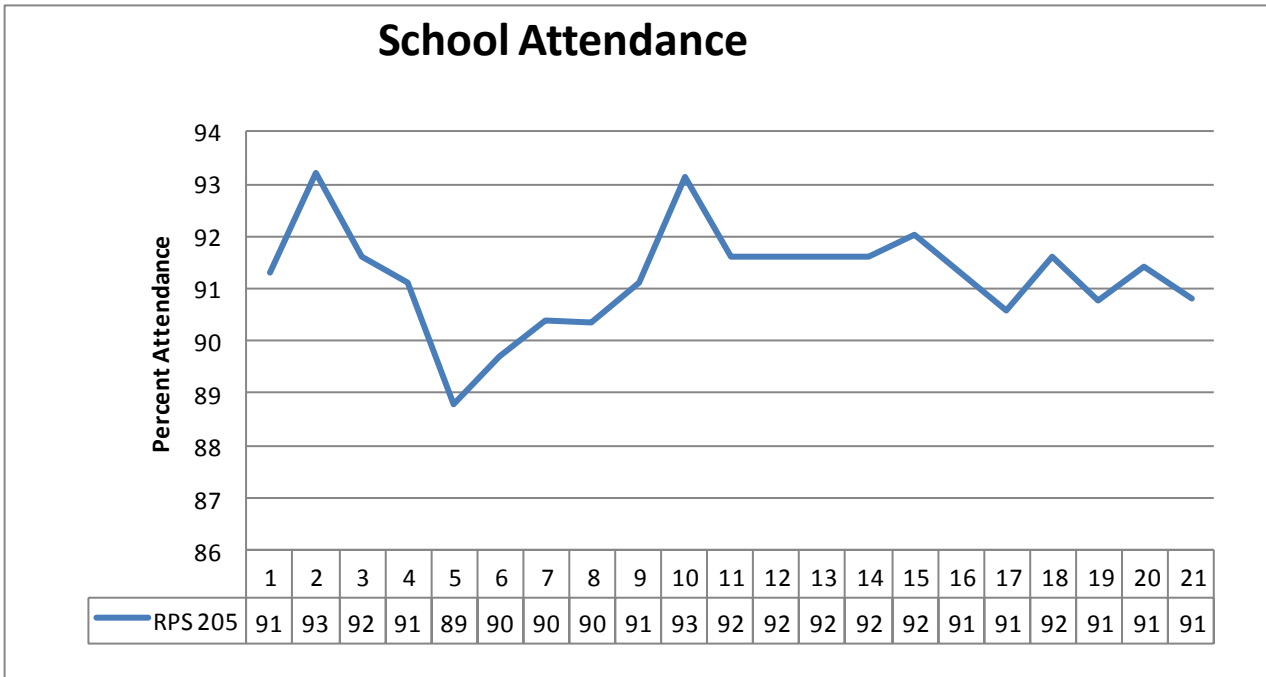


Figure 5 shows school attendance to date in 2011. for the first 5 weeks of the year, school attendance was on a slight decrease for RPS District 205 but has held steadily above 90% for weeks 6-20. For CDC Week 21 school attendance increased slightly to 90.79%

Number of confirmed H1N1 influenza cases to date in Winnebago County (2011): 3 (IDPH)

Number of confirmed Novel H3N2 influenza cases to date in Winnebago County (2011): 5 (IDPH)

Number of confirmed Novel Influenza B cases for to date in Winnebago County (2011): 11 (IDPH)

Outside the County:

(No new data on Influenza Activity and ILI by state was reported for CDC Week #21)

Illinois influenza activity (as of Week 20):

NO Activity

ILI Activity Level (Influenza like Illnesses reported)

Illinois is **MINIMAL** on the scale

United States influenza activity (as of Week 20):

No state; reported widespread , regional, or local influenza activity

Sporadic activity influenza activity was reported in

Puerto Rico and 21 states

Washington DC, the U.S. Virgin Islands, Guam, and 29 states including Illinois



Questions/Comments?

Amanda Mehl, MPH
Epidemiologist
Health Promotion and Protection
Winnebago County
Health Department
401 Division Street
Rockford, IL 61104
815-720-4215



Public Health
Prevent. Promote. Protect.