



**Weekly Influenza Surveillance Report  
CDC Week 36 September 4th-September 10th, 2011**

**In Brief:**

***Mortality***

Confirmed deaths from Pneumonia/Influenza Week 36: **5**

Percent of deaths due to Pneumonia/Influenza: **10.41%**

***Influenza-Like Illness Surveillance***

Sentinel Site ILI rate -Week 36 ending September 10th: **0.42**

***Pneumonia Hospital Admissions***

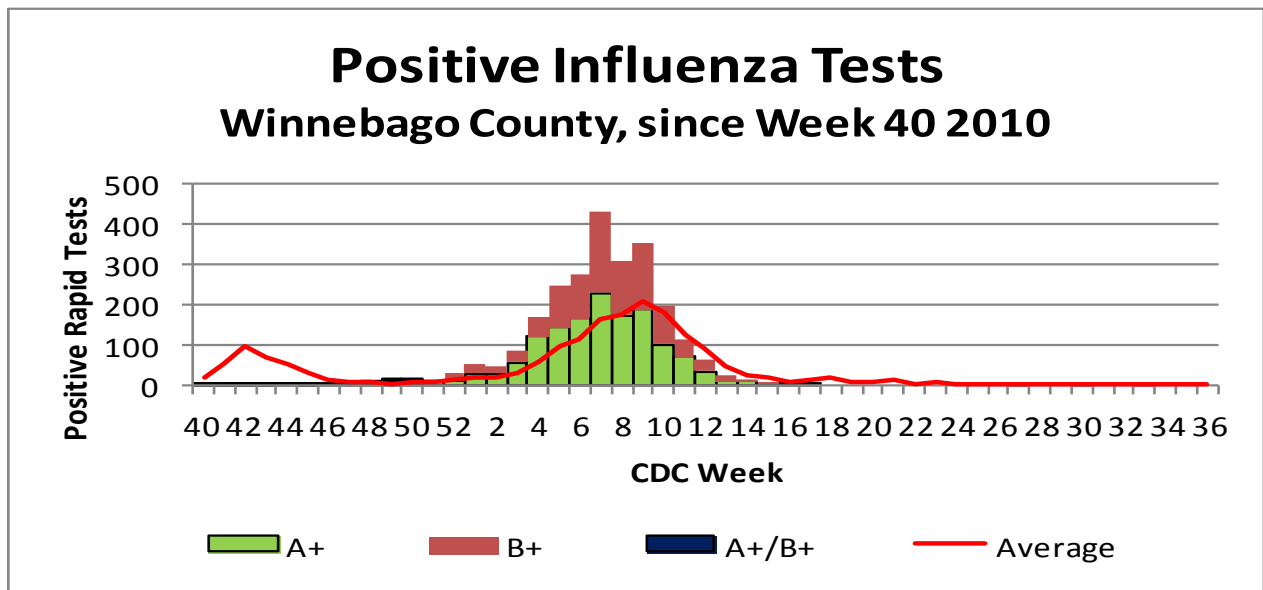
Week 36 Ending September 10th: **19**

Previous Week 35 Ending September 3rd: **25**

Note: Numbers include 2 hospitals and are one week behind due to reporting methods.

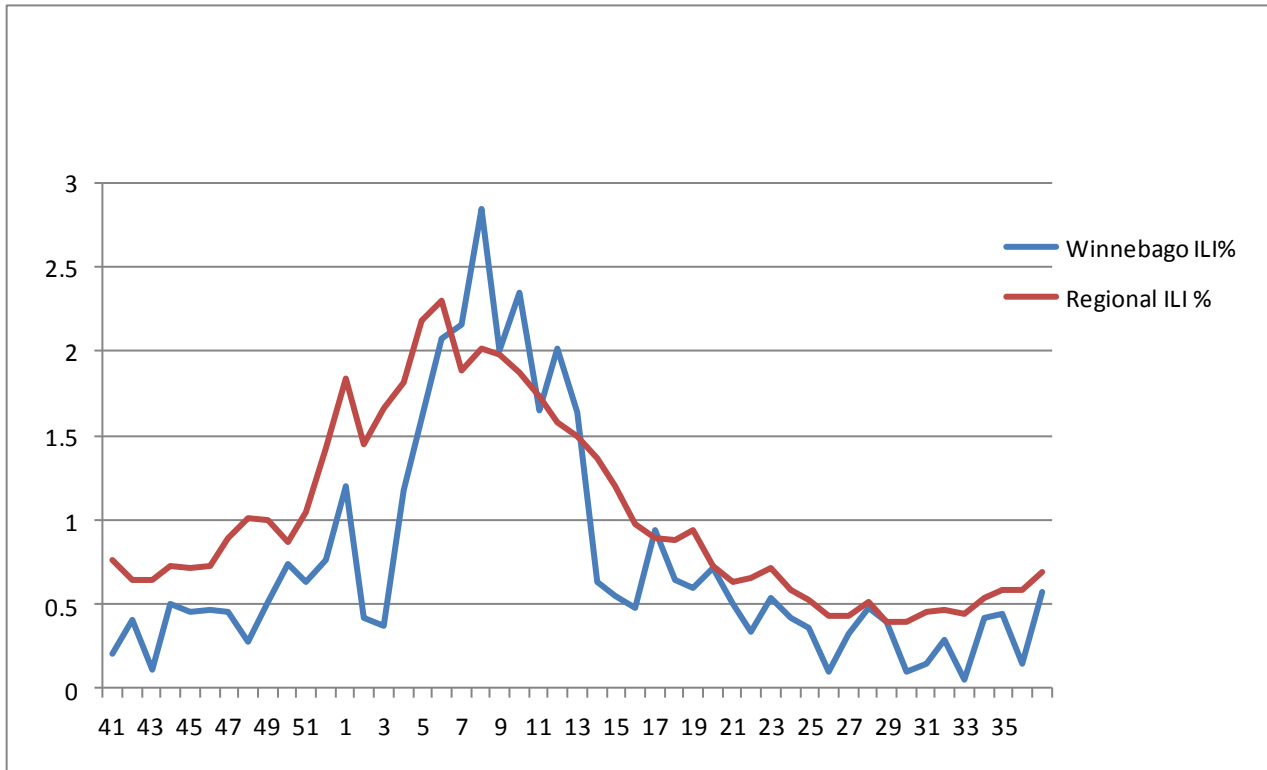
***School Attendance***

Week 36 Ending September 10th: **95.23%**

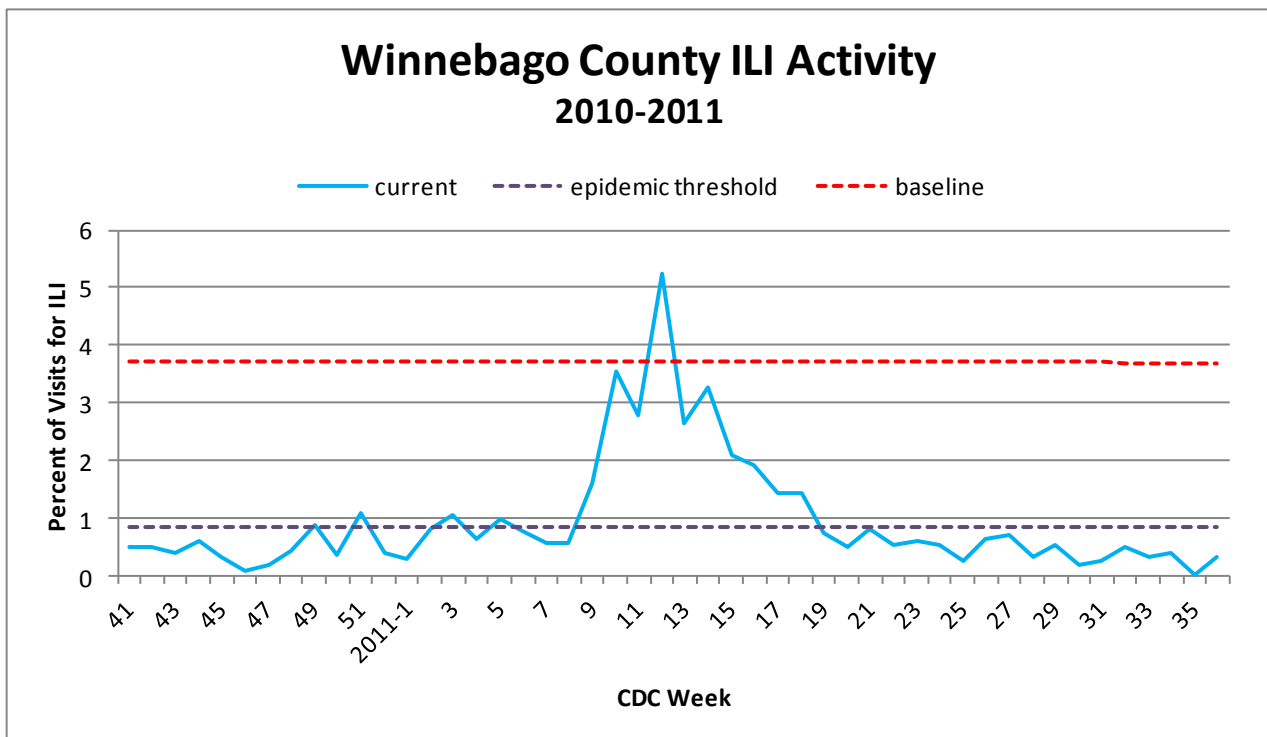


**Figure 1** displays the current number of rapid flu cases reported to our department and broken down by influenza sub-typing compared to a 4-year historical average (the red line). Ending numbers for CDC Week 36 in Winnebago County are 2479 total positive rapid flu reported for this flu season. There were no new cases of Influenza reported for Week 36 which is below the historical average of 0.233 Influenza cases reported as well for this week over the past four years.

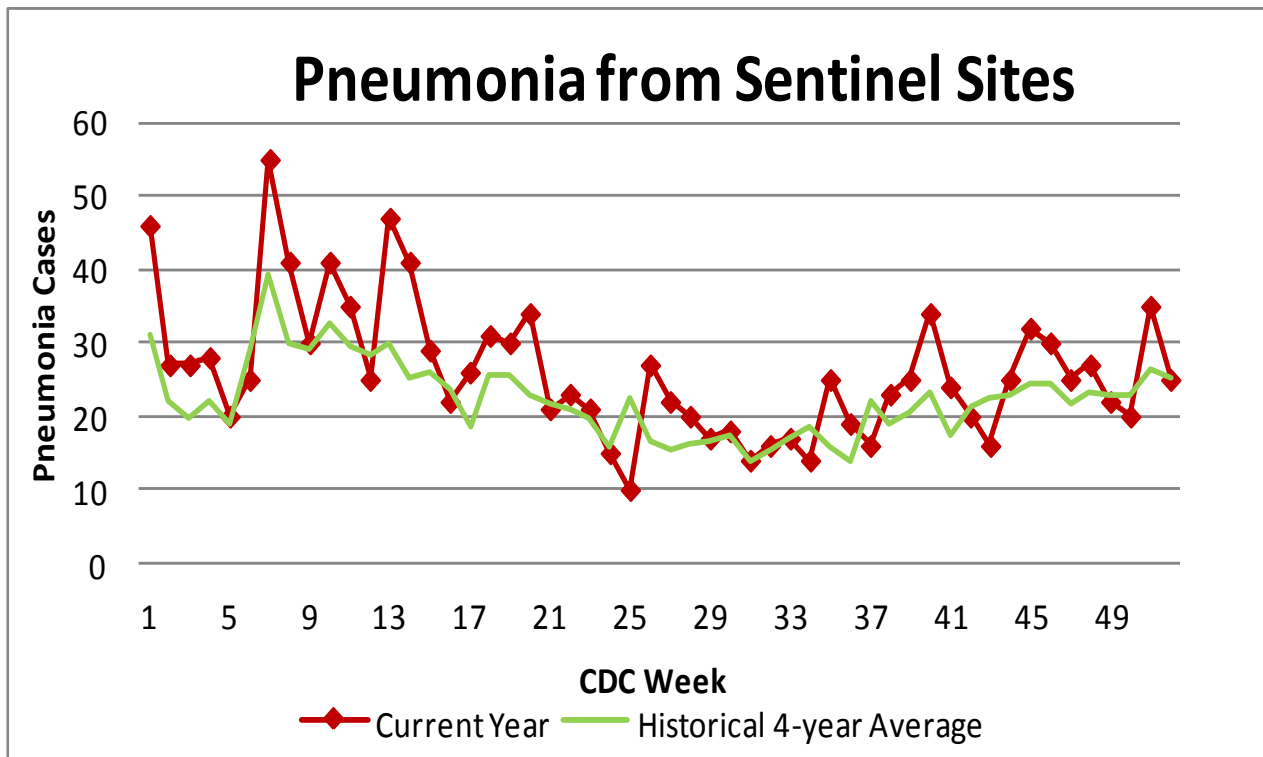
## Weekly Percentage of Visits as Identified by Essence



**Figure 2** displays the weekly percentage of Influenza-Like Illness (ILI) as identified by the Essence Syndromic Surveillance System. The blue line shows percentage of ILI Emergency Department visits in Winnebago County from our two participating hospitals and the red line shows the regional ILI percentage for all counties participating in ESSENCE. For CDC Week 36, Winnebago county reported an ILI percent of **0.57**, slightly below the regional ILI percent of **0.69** for Week 36.



**Figure 3** is the representation of all visits from our sentinel sites not participating in Essence for ILI. ILI activity was 0.42% among the three sites for CDC Week 36.



**Figure 4** compares the current number of pneumonia hospital admissions (red line) against the 4-year historical average (the green line). For CDC Week 36, we were above the 4-year historical average of 13.75 with 19 total hospital admittances reported. Numbers for weeks 34, 35, and 36 for 2011 are still arriving.

Number of confirmed H1N1 influenza cases to date in Winnebago County (2011): 3 (IDPH)

Number of confirmed Novel H3N2 influenza cases to date in Winnebago County (2011): 5 (IDPH)

Number of confirmed Novel Influenza B cases for to date in Winnebago County (2011): 11 (IDPH)

**Outside the County:**

**(No new data on Influenza Activity and ILI by state was reported for CDC Week #22)**

Illinois influenza activity (as of Week 20):

**NO Activity**

ILI Activity Level (Influenza like Illnesses reported)

Illinois is **MINIMAL** on the scale



**Questions/Comments?**

Amanda Mehl, MPH  
Epidemiologist  
Health Promotion and Protection  
Winnebago County  
Health Department  
401 Division Street  
Rockford, IL 61104  
815-720-4215



**Public Health**  
Prevent. Promote. Protect.