



Weekly Influenza Surveillance Report
CDC Week 38 September 18th-September 24th, 2011

In Brief:

Mortality

Confirmed deaths from Pneumonia/Influenza Week 38: **2**
 Percent of deaths due to Pneumonia/Influenza Week 38: **3.77%**

Influenza-Like Illness Surveillance

Sentinel Site ILI rate -Week 38 ending September 24th: **0.32%**

Pneumonia Hospital Admissions

Week 38 Ending September 24th: **23**
 Previous Week 37 Ending September 17th: **23**
 Note: Numbers include 2 hospitals and are one week behind due to reporting methods.

School Attendance

Week 38 Ending September 24th: **95.19%**

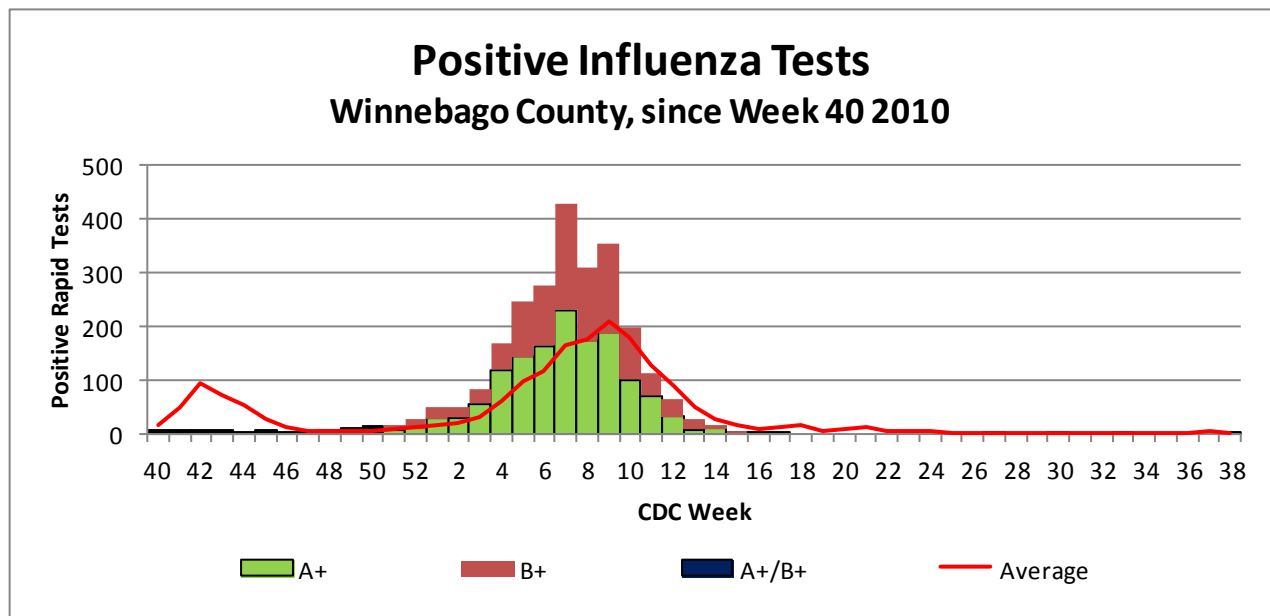


Figure 1 displays the current number of rapid flu cases reported to our department and broken down by influenza sub-typing compared to a 4-year historical average (the red line). Ending numbers for CDC Week 38 in Winnebago County are 2480 total positive rapid flu reported for this flu season. There was one new case of Influenza reported for Week 38 which is below the historical average of 2.5 Influenza cases reported as well for this week over the past four years.

Weekly Percentage of Visits as Identified by Essence

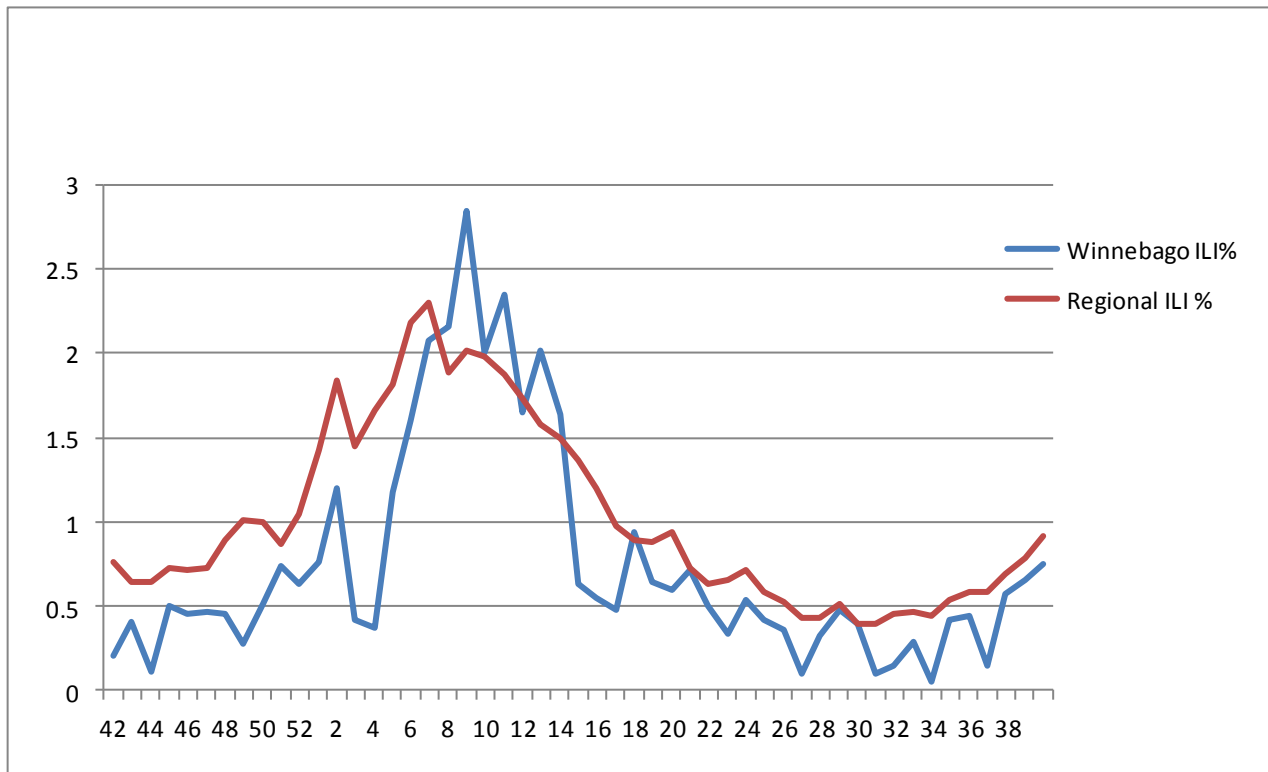


Figure 2 displays the weekly percentage of Influenza-Like Illness (ILI) as identified by the Essence Syndromic Surveillance System. The blue line shows percentage of ILI Emergency Department visits in Winnebago County from our two participating hospitals and the red line shows the regional ILI percentage for all counties participating in ESSENCE. For CDC Week 38, Winnebago county reported an ILI percent of **0.75**, slightly below the regional ILI percent of **0.92**.

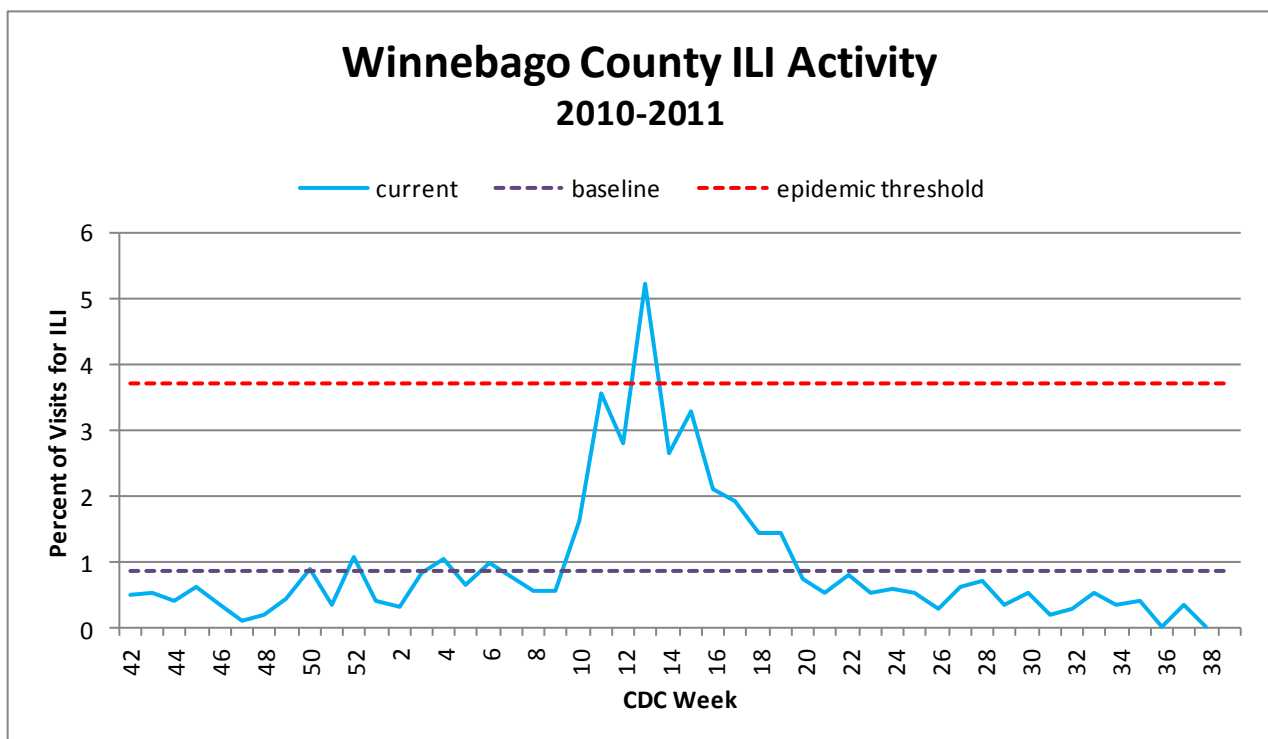


Figure 3 is the representation of all visits from our sentinel sites not participating in Essence for ILI. ILI activity was very low at 0.08% among the three sites for CDC Week 38.

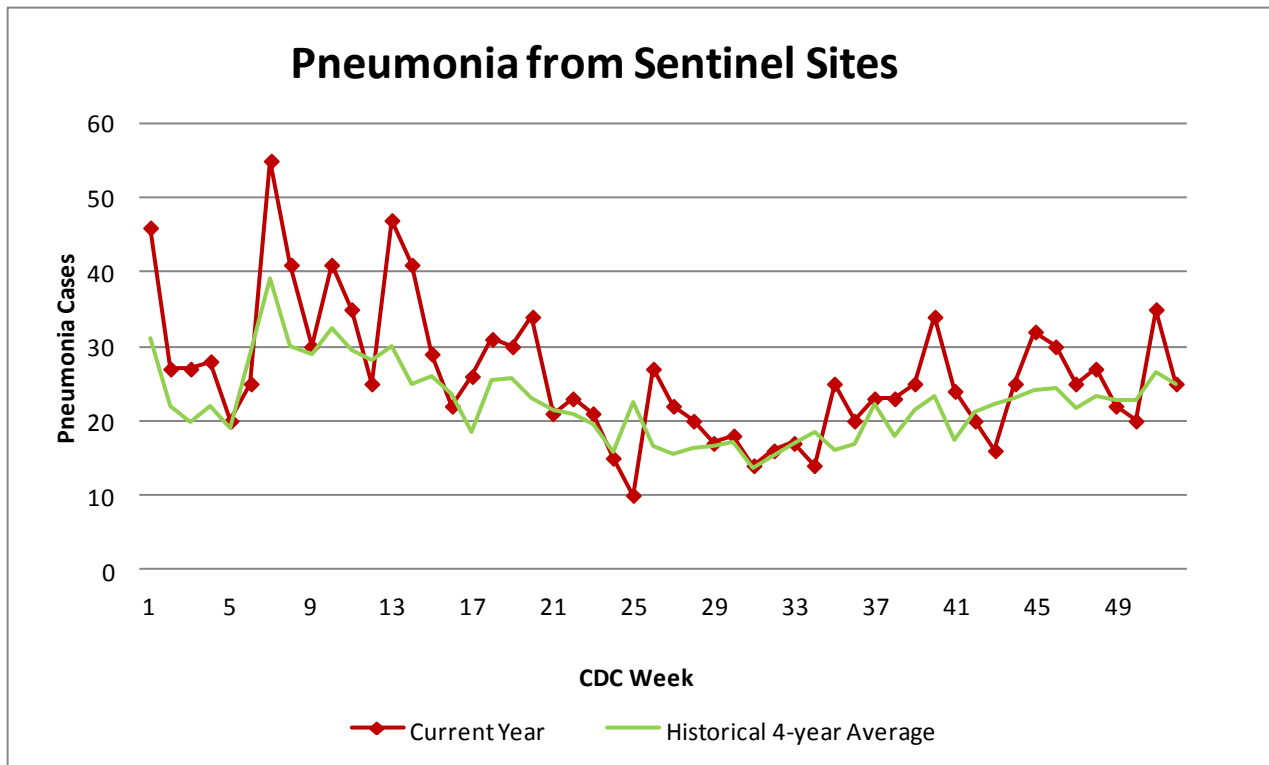


Figure 4 compares the current number of pneumonia hospital admissions (red line) against the 4-year historical average (the green line). For CDC Week 38, we were above the 4-year historical average of 18 with 23 total hospital admittances reported. Numbers for weeks 36, 37, and 38 for 2011 are still arriving.

Number of confirmed H1N1 influenza cases to date in Winnebago County (2011): 3 (IDPH)

Number of confirmed Novel H3N2 influenza cases to date in Winnebago County (2011): 5 (IDPH)

Number of confirmed Novel Influenza B cases for to date in Winnebago County (2011): 11 (IDPH)

Outside the County:

(No new data on Influenza Activity and ILI by state was reported for CDC Week #22)

Illinois influenza activity (as of Week 20):

NO Activity

ILI Activity Level (Influenza like Illnesses reported)

Illinois is **MINIMAL** on the scale



Questions/Comments?

Amanda Mehl, MPH
Epidemiologist
Health Promotion and Protection
Winnebago County
Health Department
401 Division Street
Rockford, IL 61104
815-720-4215



Public Health
Prevent. Promote. Protect.