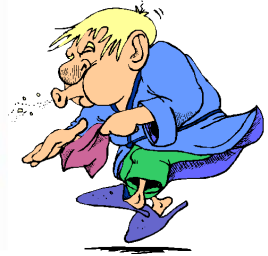




Winnebago County Health Department



Weekly Influenza Surveillance Report CDC Week 40 October 2nd-October 8th, 2011

In Brief:

Mortality

Confirmed deaths from Pneumonia/Influenza Week 40: **1**

Percent of deaths due to Pneumonia/Influenza Week 40: **2.33%**

Influenza-Like Illness Surveillance

Sentinel Site ILI rate -Week 40 ending October 8th: **0.38%**

Pneumonia Hospital Admissions

Week 40 Ending October 8th: **8**

Previous Week 39 Ending October 1st: **28**

Note: Numbers include 2 hospitals and are one week behind due to reporting methods.

School Attendance

Week 40 Ending October 8th: **94.41%**

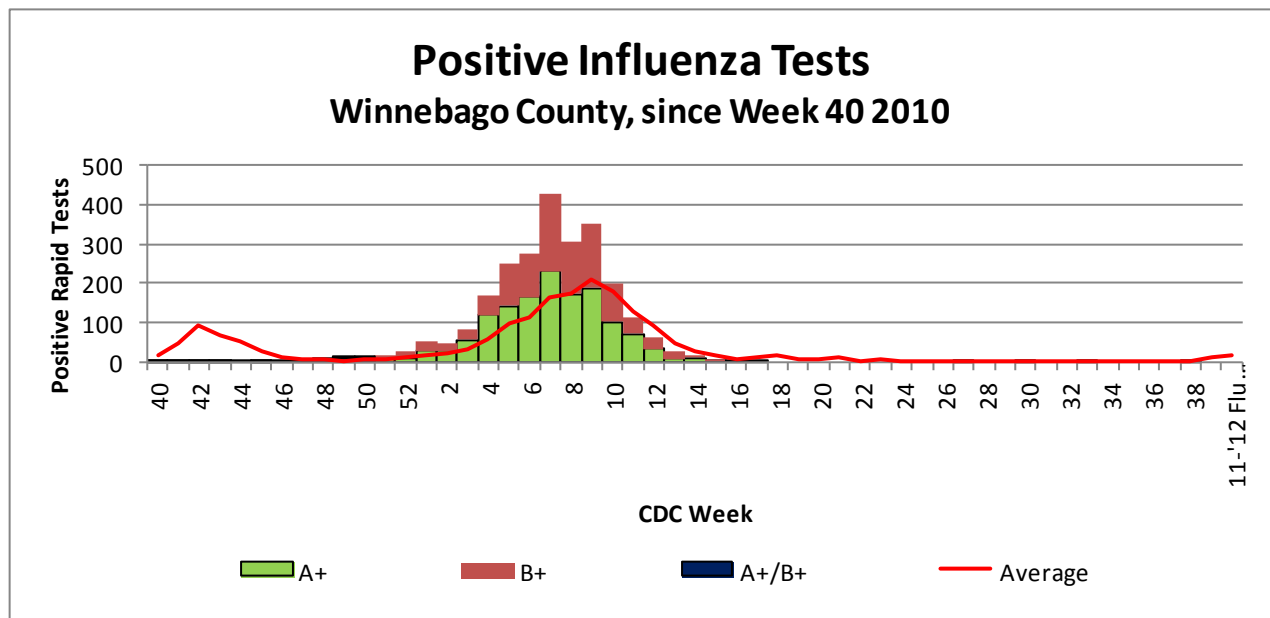


Figure 1 displays the current number of rapid flu cases reported to our department and broken down by influenza sub-typing compared to a 4-year historical average (the red line). Ending numbers for CDC Week 40 in Winnebago County are 2480 total positive rapid flu reported for this flu season. There was no new cases of Influenza reported for Week 40 which is well below the historical average of 17.25 Influenza cases.

Weekly Percentage of Visits as Identified by Essence

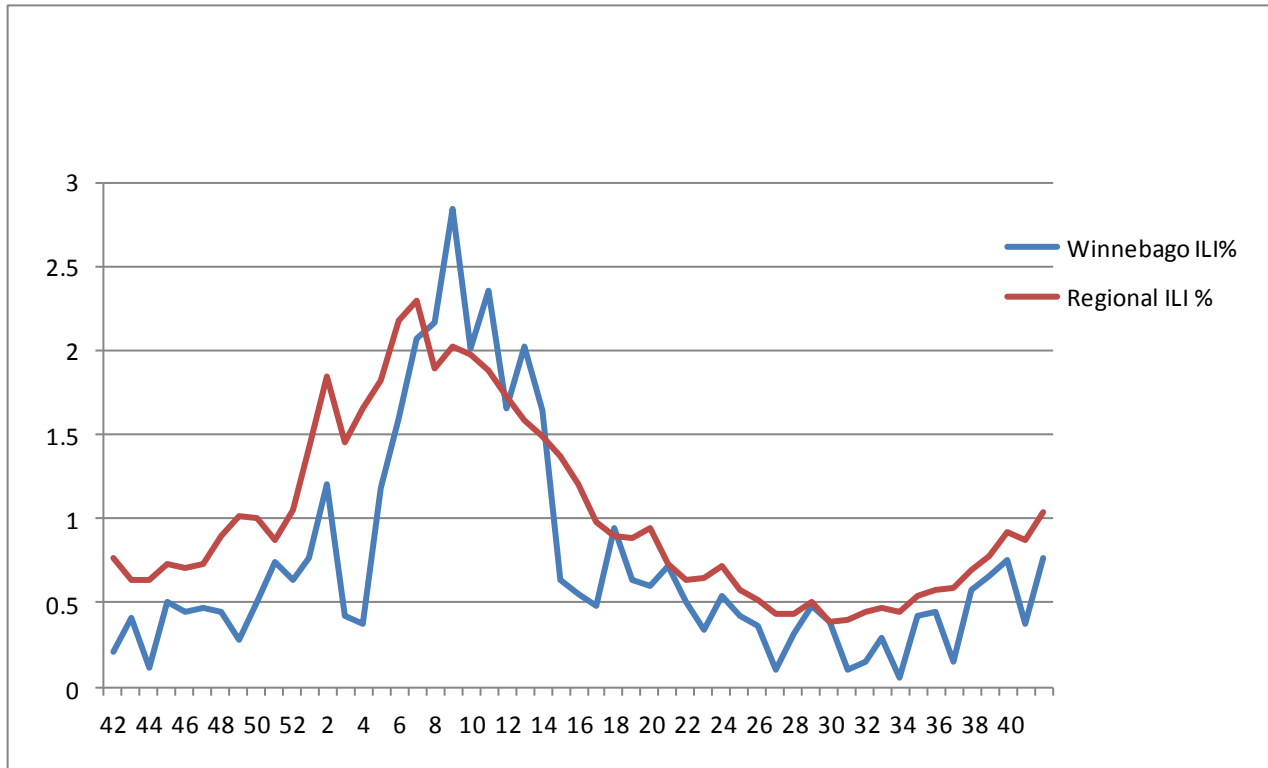


Figure 2 displays the weekly percentage of Influenza-Like Illness (ILI) as identified by the Essence Syndromic Surveillance System. The blue line shows percentage of ILI Emergency Department visits in Winnebago County from our two participating hospitals and the red line shows the regional ILI percentage for all counties participating in ESSENCE. For CDC Week 40, Winnebago county reported an ILI percent of **0.76**, slightly below the regional ILI percent of **1.04**.

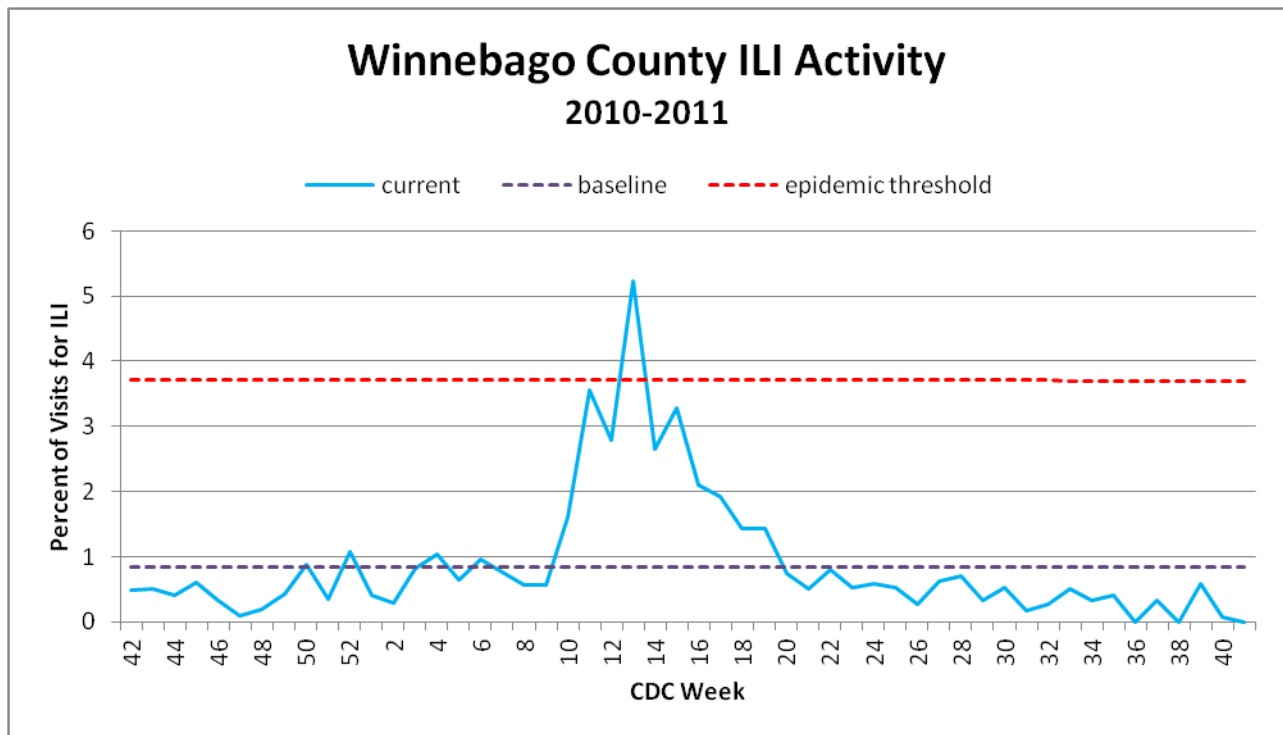


Figure 3 is the representation of all visits from our sentinel sites not participating in Essence for ILI. ILI activity was very low at 0.38% among the three sites for CDC Week 40.

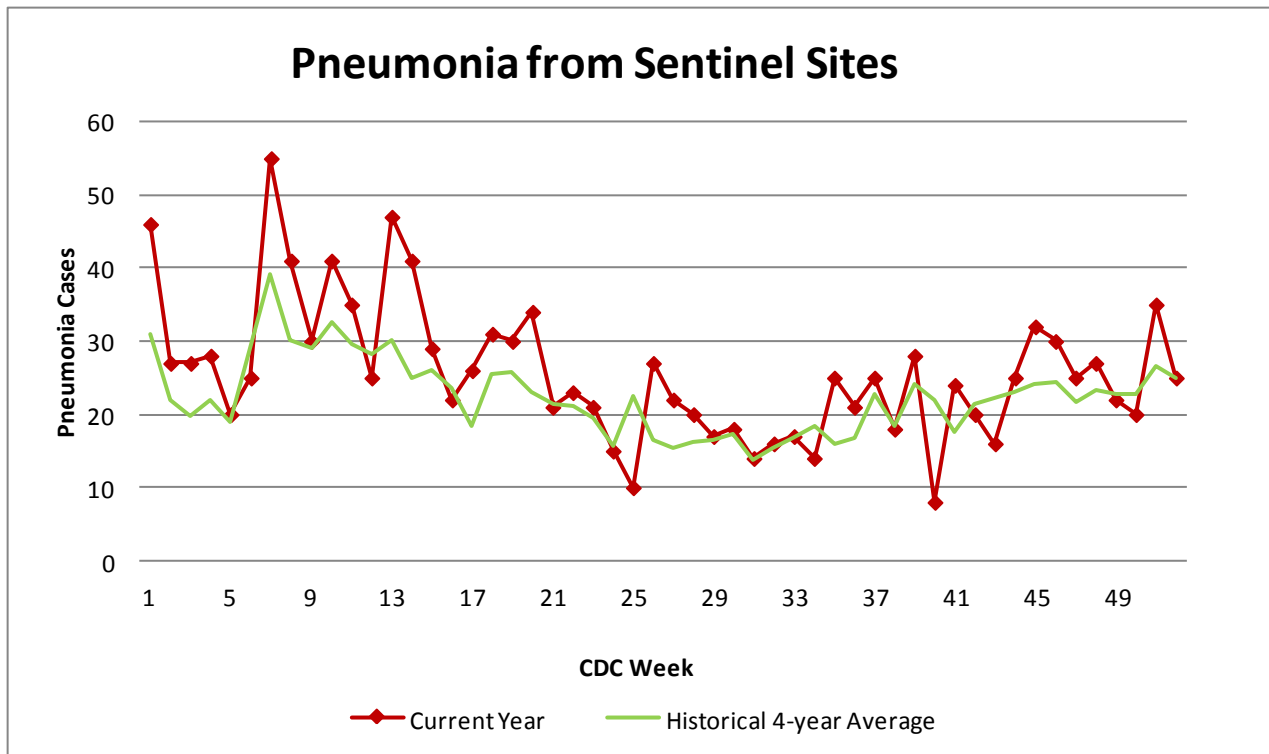


Figure 4 compares the current number of pneumonia hospital admissions (red line) against the 4-year historical average (the green line). For CDC Week 40, we were below the 4-year historical average of 22 with only 8 total hospital admittances reported. Numbers for weeks 38, 39, and 40 for 2011 are still arriving.

Outside the County:

Illinois influenza activity (as of Week 40):

Illinois did NOT REPORT

- Sporadic influenza activity was reported by the District of Columbia, Puerto Rico, the U.S. Virgin Islands, and 20 states (Alaska, Arizona, California, Connecticut, Florida, Hawaii, Idaho, Indiana, Louisiana, Massachusetts, Michigan, Minnesota, New Jersey, New York, Oregon, Pennsylvania, South Dakota, Virginia, Washington, and Wisconsin).
- No influenza activity was reported by Guam and 29 states (Alabama, Arkansas, Colorado, Delaware, Georgia, Iowa, Kansas, Kentucky, Maine, Maryland, Mississippi, Missouri, Montana, Nebraska, Nevada, New Hampshire, New Mexico, North Carolina, North Dakota, Ohio, Oklahoma, Rhode Island, South Carolina, Tennessee, Texas, Utah, Vermont, West Virginia, and Wyoming).
- One state (Illinois) did not report

ILI Activity Level (Influenza like Illnesses reported Week 40)

Illinois is **MINIMAL** on the scale



Questions/Comments?

Amanda Mehl, MPH
Epidemiologist
Health Promotion and Protection
Winnebago County
Health Department
401 Division Street
Rockford, IL 61104
815-720-4215



Public Health
Prevent. Promote. Protect.