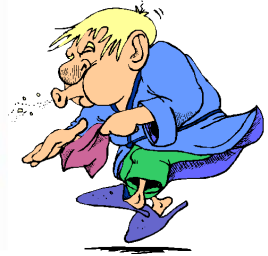




Winnebago County Health Department



Weekly Influenza Surveillance Report CDC Week 41 October 9th-October 15th, 2011

In Brief:

Mortality

Confirmed deaths from Pneumonia/Influenza Week 41: **5**

Percent of deaths due to Pneumonia/Influenza Week 41: **9.62%**

Influenza-Like Illness Surveillance

Sentinel Site ILI rate -Week 41 ending October 15th: **0.16%**

Pneumonia Hospital Admissions

Week 41 Ending October 15th: **5**

Previous Week 40 Ending October 8th: **17**

Note: Numbers include 2 hospitals and are one week behind due to reporting methods.

School Attendance

Week 41 Ending October 15th: **94.39%**

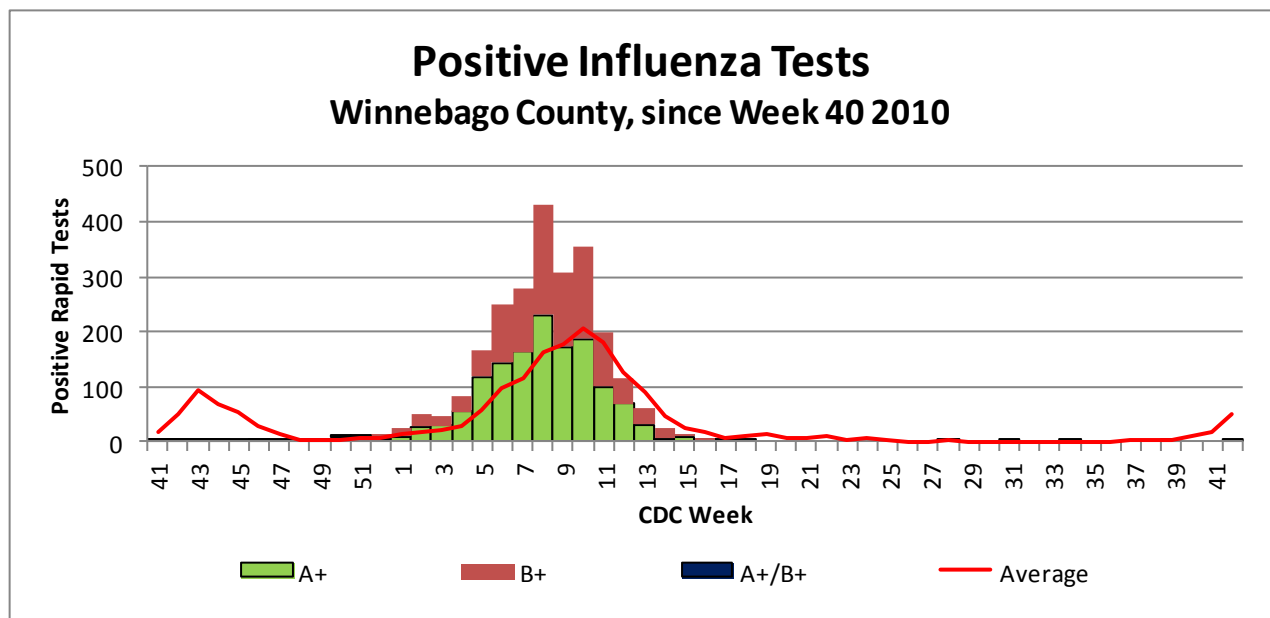


Figure 1 displays the current number of rapid flu cases reported to our department and broken down by influenza sub-typing compared to a 4-year historical average (the red line). 5 total A positive rapid flu cases have been reported for this 2011-12 flu season. 3 of these cases of Influenza reported for Week 41 which is well below the historical average of 50 Influenza cases.

Weekly Percentage of Visits as Identified by Essence

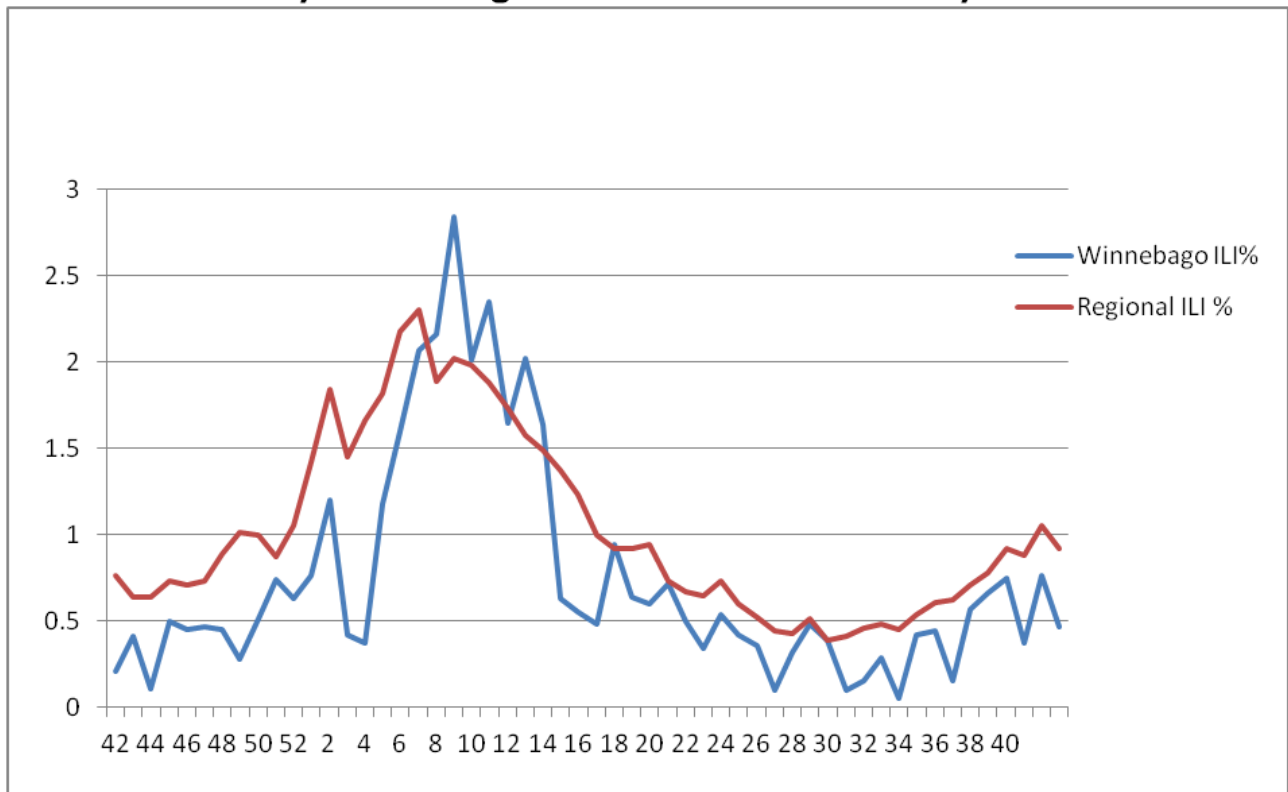


Figure 2 displays the weekly percentage of Influenza-Like Illness (ILI) as identified by the Essence Syndromic Surveillance System. The blue line shows percentage of ILI Emergency Department visits in Winnebago County from our two participating hospitals and the red line shows the regional ILI percentage for all counties participating in ESSENCE. For CDC Week 41, Winnebago county reported an ILI percent of **0.47**, below the regional ILI percent of **0.92**.

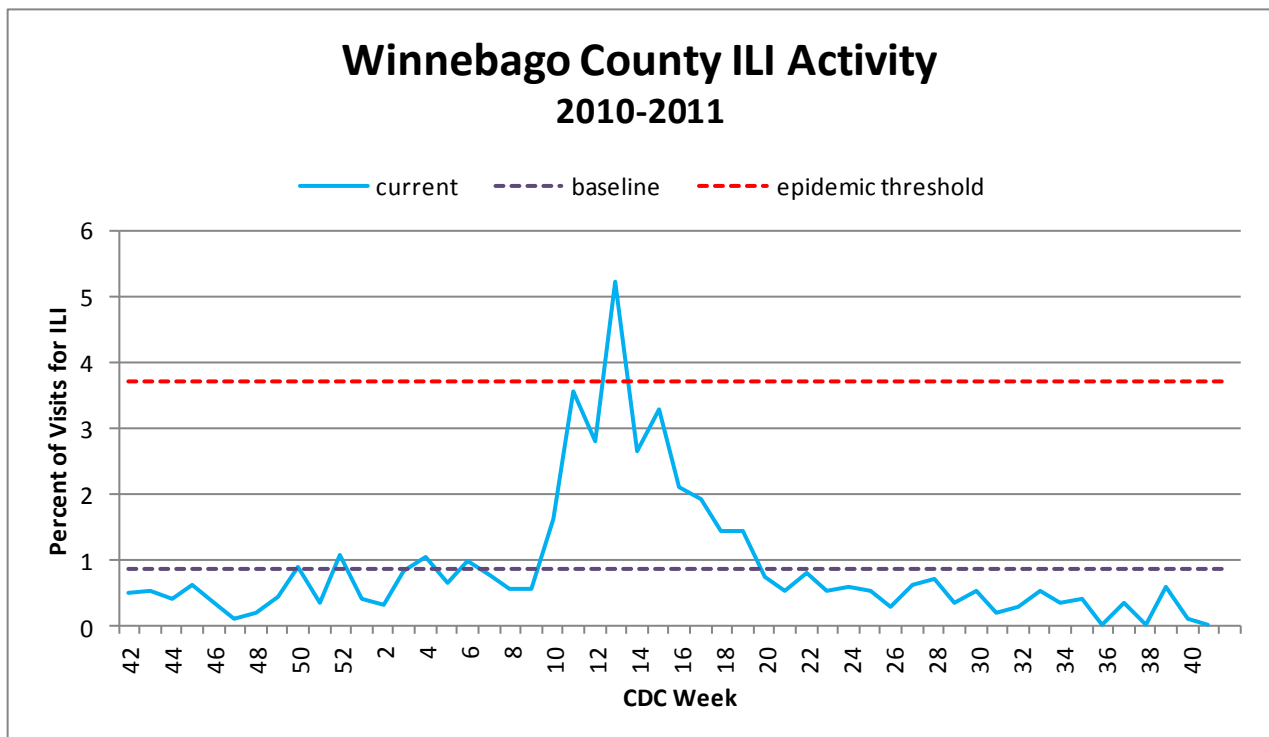


Figure 3 is the representation of all visits from our sentinel sites not participating in Essence for ILI. ILI activity was very low at 0.16% among the three sites for CDC Week 41.

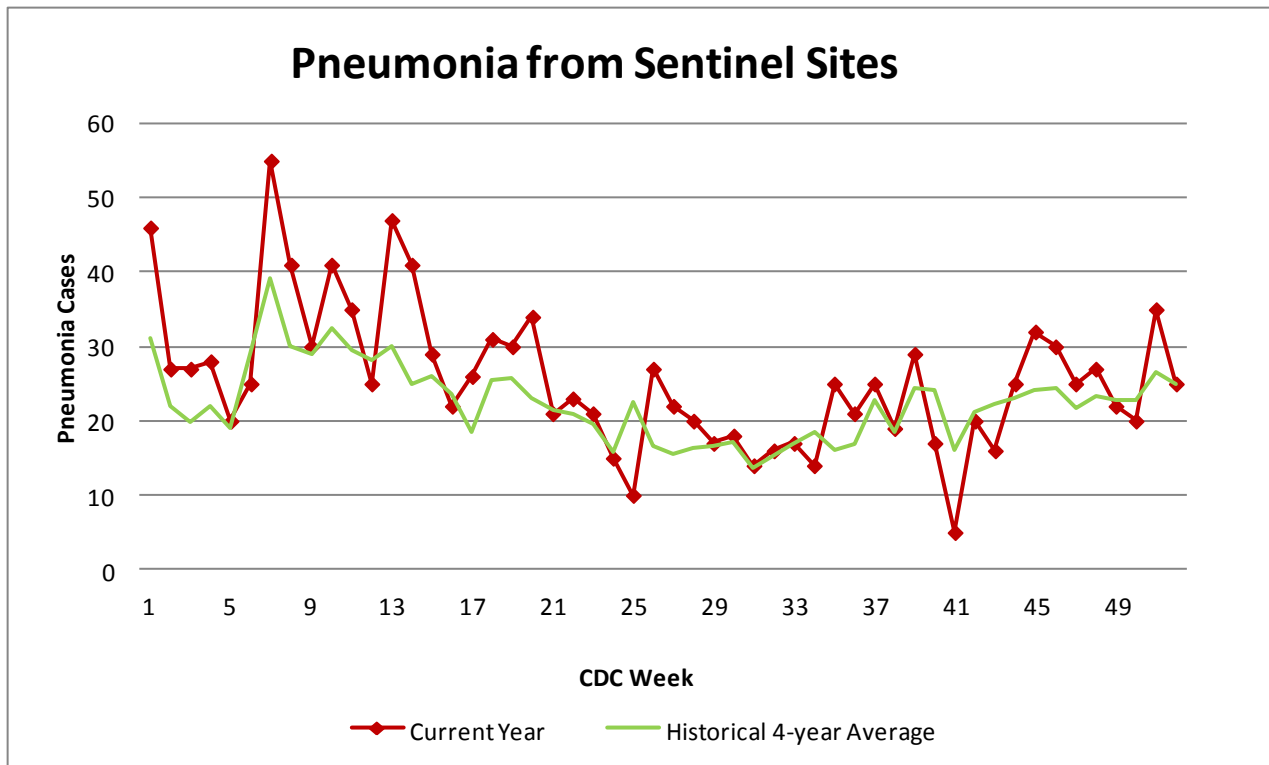


Figure 4 compares the current number of pneumonia hospital admissions (red line) against the 4-year historical average (the green line). For CDC Week 41, we were below the 4-year historical average of 16 with only 5 total hospital admittances reported. Numbers for weeks 39, 40, and 41 for 2011 are still arriving.

Outside the County:

Illinois influenza activity (as of Week 41):

Illinois reported NO INFLUENZA ACTIVITY

- Sporadic influenza activity was reported by the District of Columbia, Guam, Puerto Rico, the U.S. Virgin Islands, and 18 states (Alaska, Arkansas, California, Connecticut, Florida, Hawaii, Indiana, Louisiana, Maine, Massachusetts, Michigan, Minnesota, New York, Ohio, Pennsylvania, Virginia, Washington, and Wisconsin).
- No influenza activity was reported by 32 states (Alabama, Arizona, Colorado, Delaware, Georgia, Idaho, Illinois, Iowa, Kansas, Kentucky, Maryland, Mississippi, Missouri, Montana, Nebraska, Nevada, New Hampshire, New Jersey, New Mexico, North Carolina, North Dakota, Oklahoma, Oregon, Rhode Island, South Carolina, South Dakota, Tennessee, Texas, Utah, Vermont, West Virginia, and Wyoming).

ILI Activity Level (Influenza like Illnesses reported Week 41)

Illinois is **MINIMAL** on the scale



Questions/Comments?

Amanda Mehl, MPH
Epidemiologist
Health Promotion and Protection
Winnebago County
Health Department
401 Division Street
Rockford, IL 61104
815-720-4215



Public Health
Prevent. Promote. Protect.