



Winnebago County Health Department



Weekly Influenza Surveillance Report CDC Week 45 November 6th-November 12th, 2011

In Brief:

Mortality

Confirmed deaths from Pneumonia/Influenza Week 45: **4**

Percent of deaths due to Pneumonia/Influenza Week 45: **6.56%**

Influenza-Like Illness Surveillance

Sentinel Site ILI rate -Week 45 ending November 12th: **0.71%**

Pneumonia Hospital Admissions

Week 45 Ending November 12th: **23**

Previous Week 44 Ending November 5th: **20**

Note: Numbers include 2 hospitals and are one week behind due to reporting methods.

School Attendance

Week 45 Ending November 12th: **94.38%**

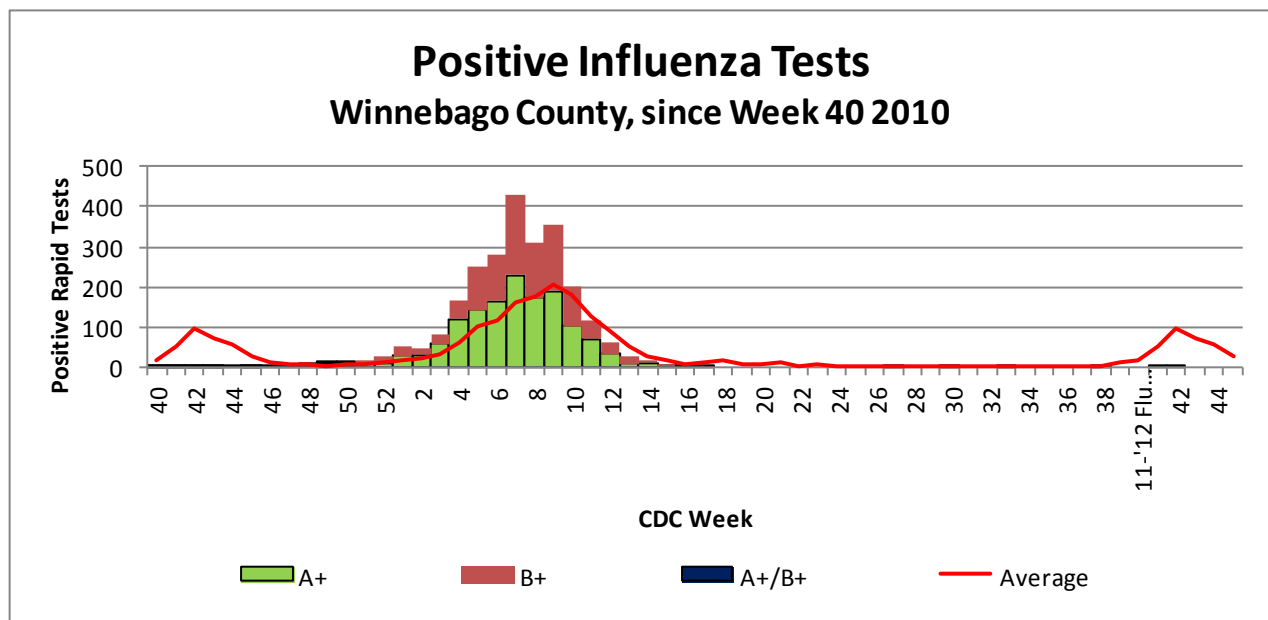


Figure 1 displays the current number of rapid flu cases reported to our department and broken down by influenza sub-typing compared to a 4-year historical average (the red line). 5 total A positive rapid flu cases have been reported for the 2011-12 flu season. No cases have been reported for Week 45 which is well below the historical average of 27.5 cases.

Weekly Percentage of Visits as Identified by Essence

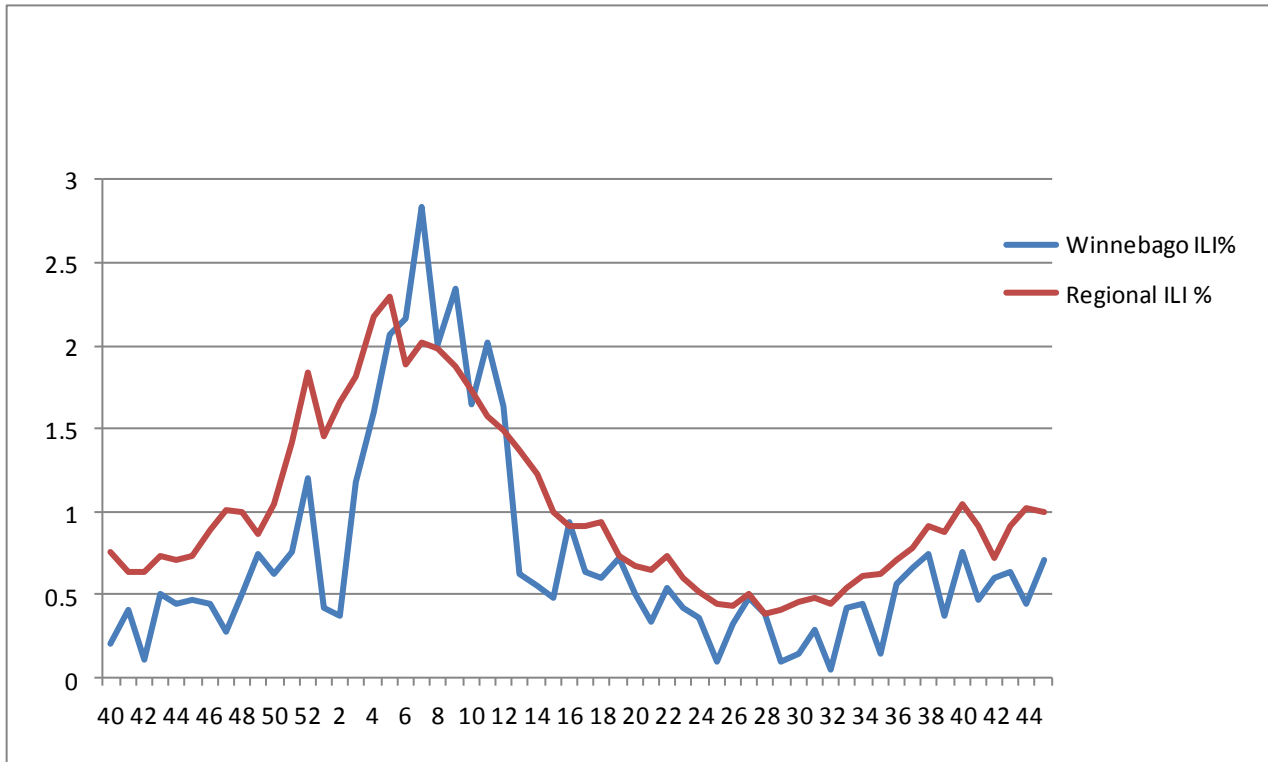


Figure 2 displays the weekly percentage of Influenza-Like Illness (ILI) as identified by the Essence Syndromic Surveillance System. The blue line shows percentage of ILI Emergency Department visits in Winnebago County from our two participating hospitals and the red line shows the regional ILI percentage for all counties participating in ESSENCE. For CDC Week 45, Winnebago county reported an ILI percent of **0.71**, slightly below the regional ILI percent of **1**.

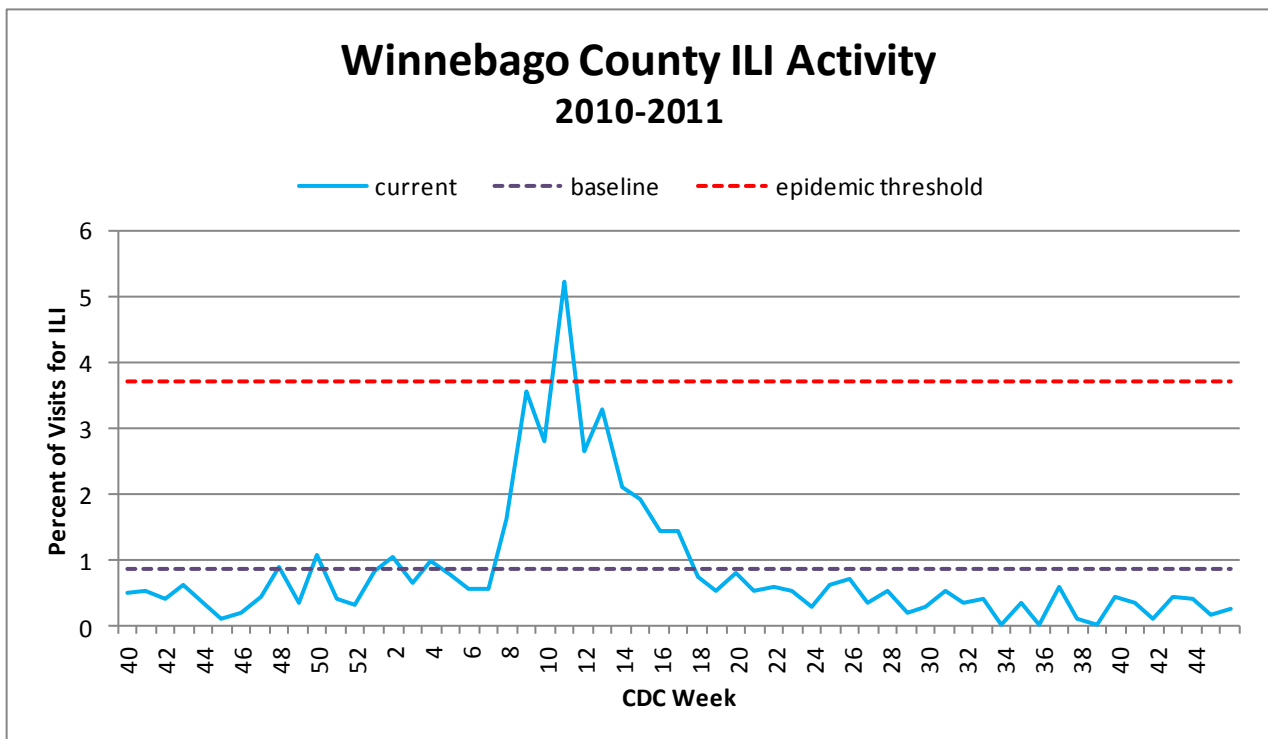


Figure 3 is the representation of all visits from our sentinel sites not participating in Essence for ILI. ILI activity was very low at 0.71% among the three sites for CDC Week 45.

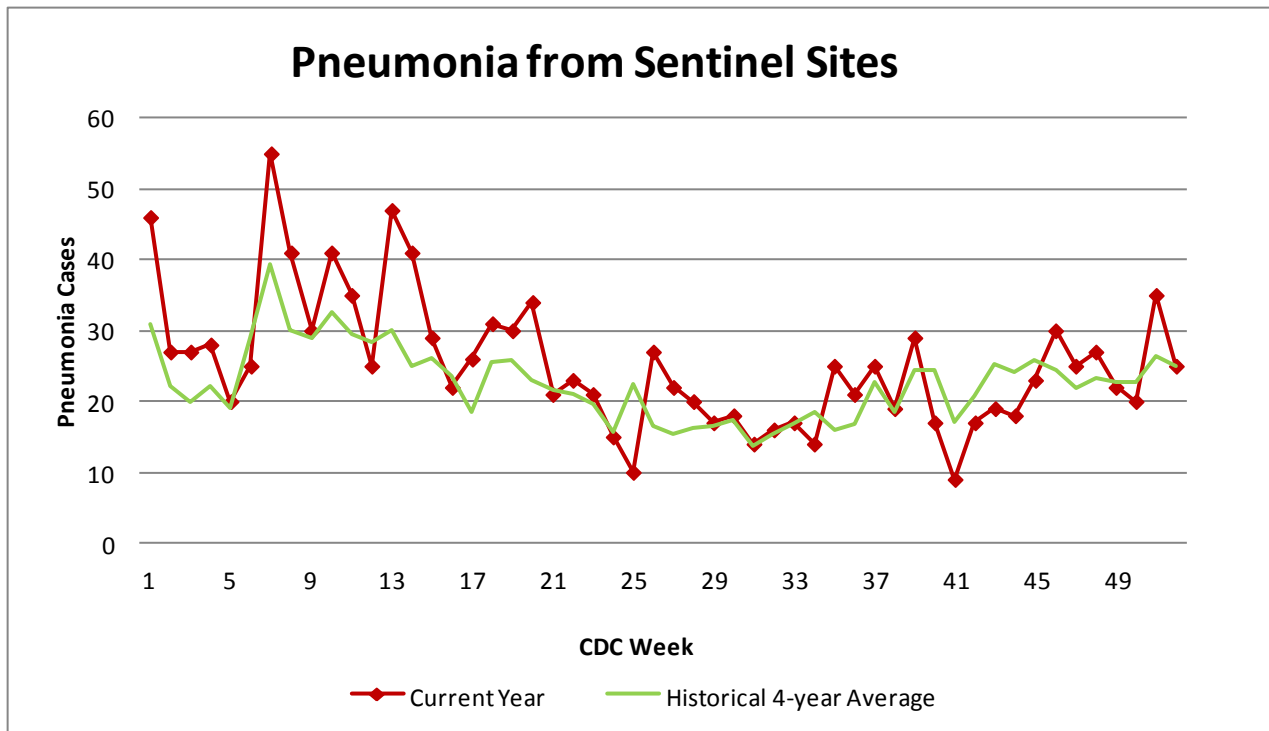


Figure 4 compares the current number of pneumonia hospital admissions (red line) against the 4-year historical average (the green line). For CDC Week 45, we are slightly below the 4-year historical average of 25.75 with 23 total hospital admittances reported. Note that all data are preliminary and numbers for weeks 43, 44, and 45 for 2011 are still arriving.

Outside the County:

Illinois influenza activity (as of Week 45):

Illinois reported NO INFLUENZA ACTIVITY

During week 45, the following influenza activity was reported:

- Sporadic influenza activity was reported by the District of Columbia, Guam, and 23 states (Alaska, California, Colorado, Connecticut, Florida, Hawaii, Indiana, Iowa, Kentucky, Louisiana, Massachusetts, Minnesota, Nevada, New York, North Carolina, Ohio, Pennsylvania, Rhode Island, Texas, Utah, Virginia, Washington, and Wisconsin).
- No influenza activity was reported by the U.S. Virgin Islands and 27 states (Alabama, Arizona, Arkansas, Delaware, Georgia, Idaho, Illinois, Kansas, Maine, Maryland, Michigan, Mississippi, Missouri, Montana, Nebraska, New Hampshire, New Jersey, New Mexico, North Dakota, Oklahoma, Oregon, South Carolina, South Dakota, Tennessee, Vermont, West Virginia, and Wyoming).

Puerto Rico did not report.

ILI Activity Level (Influenza like Illnesses reported Week 45)

Illinois is **MINIMAL** on the scale



Questions/Comments?

Amanda Mehl, MPH
Epidemiologist
Health Promotion and Protection
Winnebago County
Health Department
401 Division Street
Rockford, IL 61104
815-720-4215



Public Health
Prevent. Promote. Protect.