



Winnebago County Health Department



Weekly Influenza Surveillance Report CDC Week 48 November 27th-December 3rd, 2011

In Brief:

Mortality

Confirmed deaths from Pneumonia/Influenza Week 48: **5**

Percent of deaths due to Pneumonia/Influenza Week 48: **6.58%**

Influenza-Like Illness Surveillance

Sentinel Site ILI rate -Week 48 ending December 3rd: **0.51 ILI reported**

Pneumonia Hospital Admissions

Week 48 Ending December 3rd: **23**

Previous Week 47 Ending November 26th: **21**

Note: Numbers include 2 hospitals and are one week behind due to reporting methods.

School Attendance

Week 48 Ending December 3rd: **94.08%**

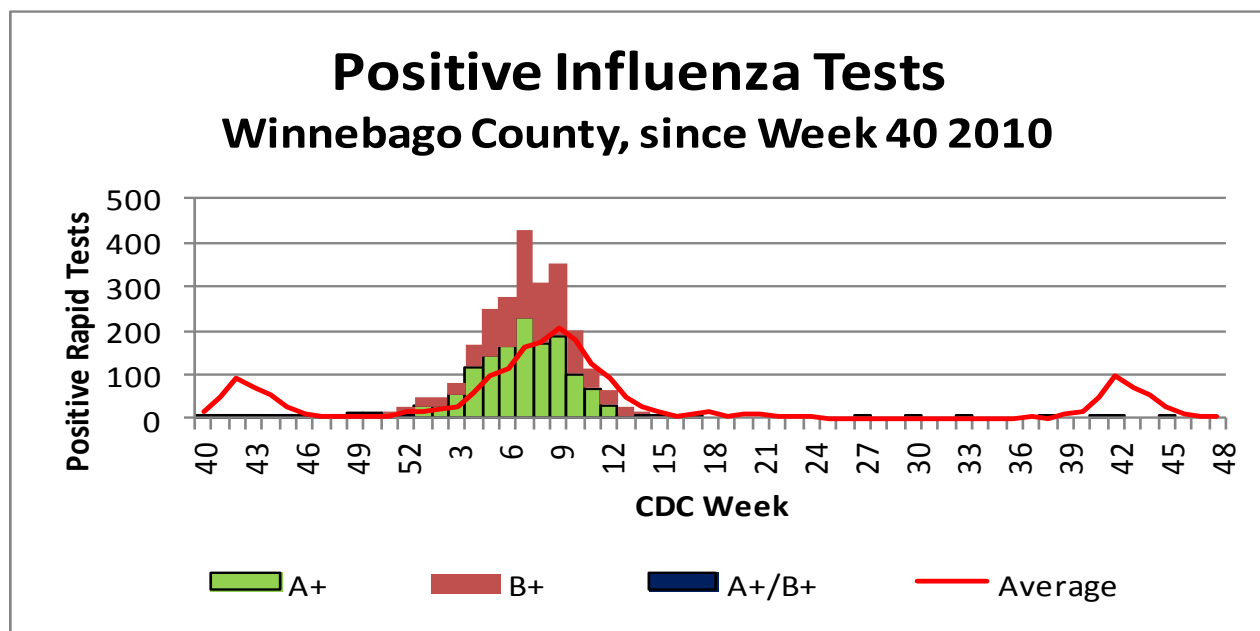


Figure 1 displays the current number of rapid flu cases reported to our department and broken down by influenza sub-typing compared to a 4-year historical average (the red line). 6 total A positive rapid flu cases have been reported for the 2011-12 flu season. No cases have been reported for Week 48 which is below the historical average of 4 cases.

Weekly Percentage of Visits as Identified by Essence

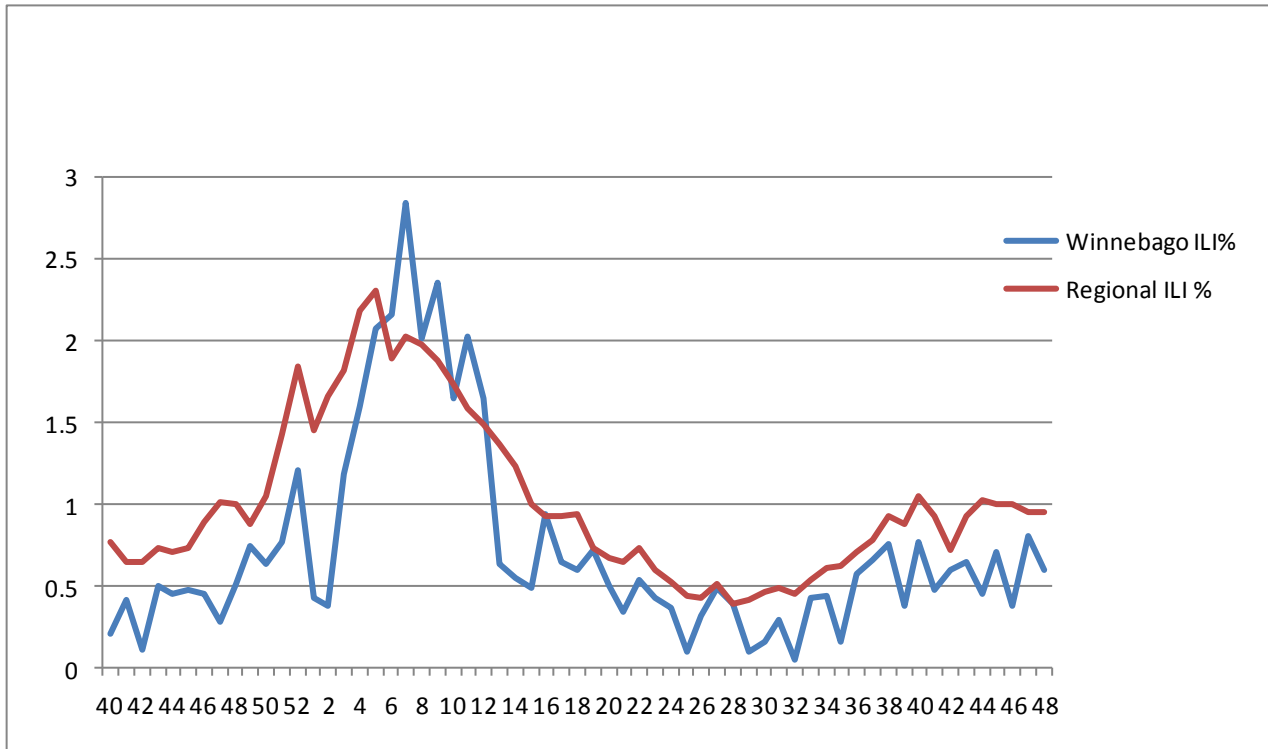


Figure 2 displays the weekly percentage of Influenza-Like Illness (ILI) as identified by the Essence Syndromic Surveillance System. The blue line shows percentage of ILI Emergency Department visits in Winnebago County from our two participating hospitals and the red line shows the regional ILI percentage for all counties participating in ESSENCE. For CDC Week 48, Winnebago county reported an ILI percent of **0.6**, slightly below the regional ILI percent of **0.95**.

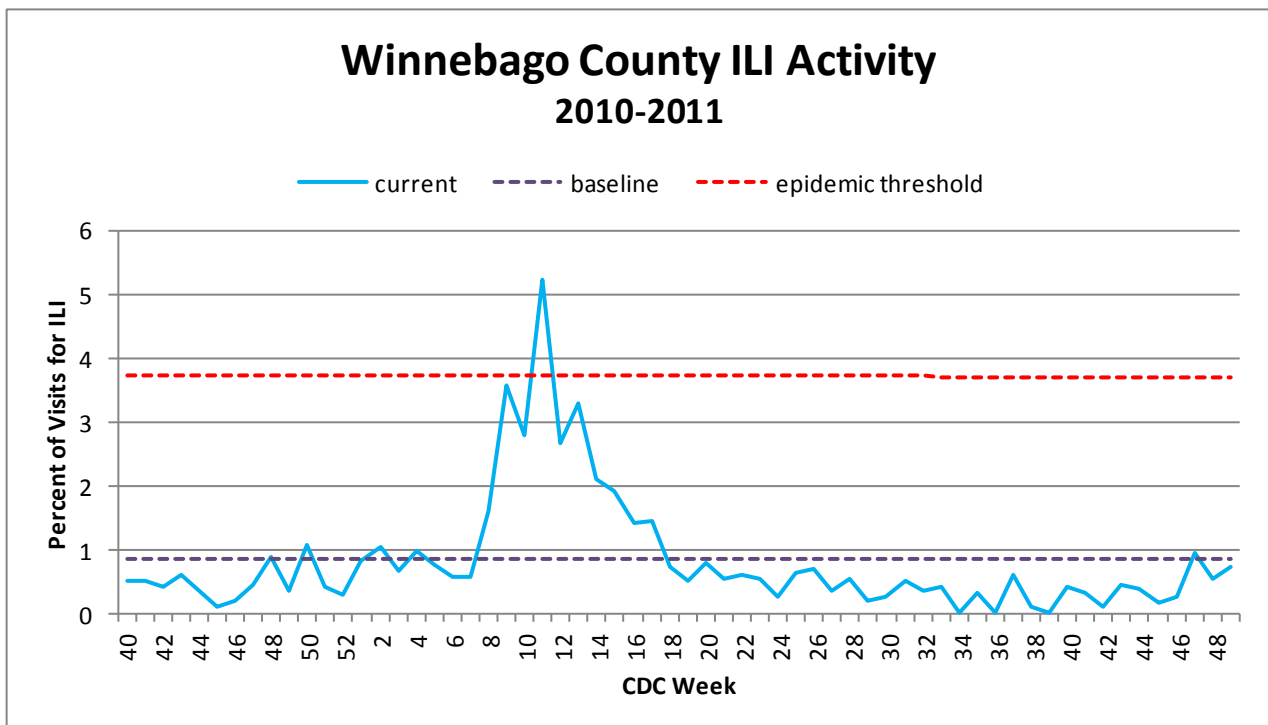


Figure 3 is the representation of all visits from our sentinel sites not participating in Essence for ILI. ILI activity among the three sites for CDC Week 48 was 0.51 %.

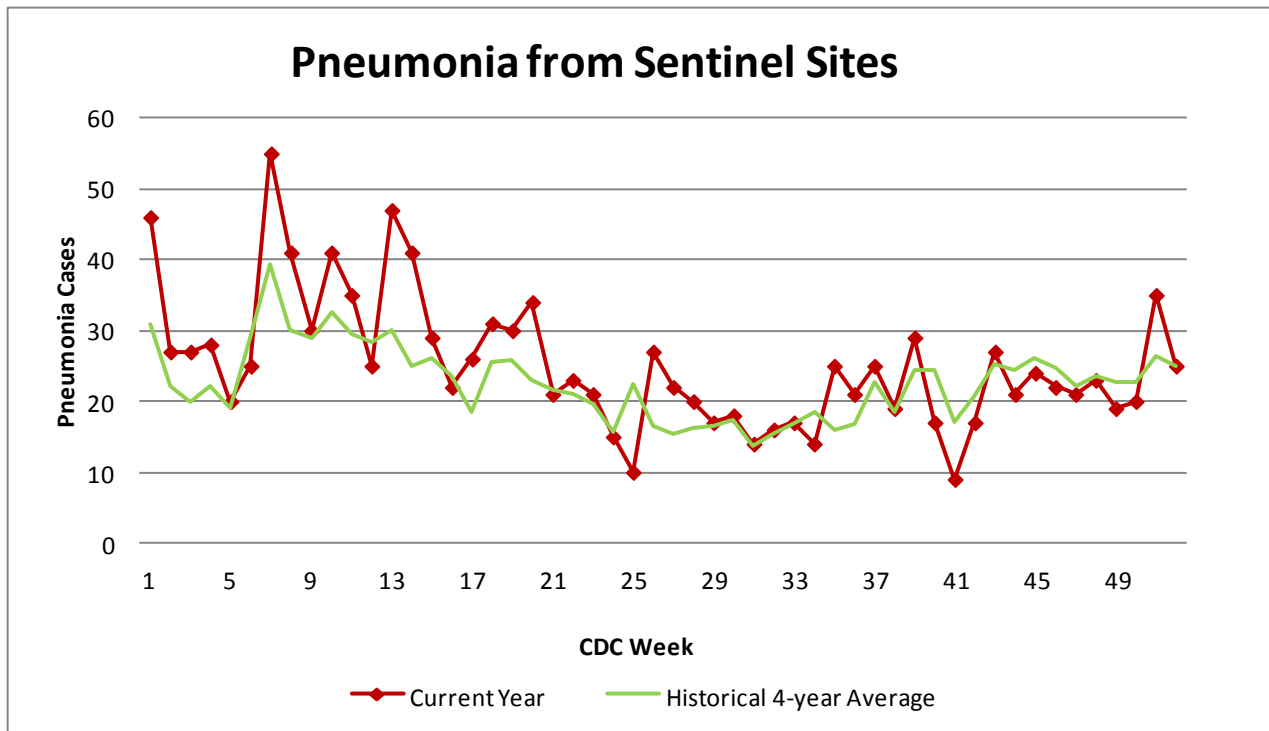


Figure 4 compares the current number of pneumonia hospital admissions (red line) against the 4-year historical average (the green line). For CDC Week 48, we are almost at the 4-year historical average of 23.5 with 23 total hospital admittances reported. Note that all data are preliminary and numbers for weeks 46, 47, and 48 for 2011 are still arriving.

Outside the County:

Illinois influenza activity (as of Week 48):

Illinois reported NO INFLUENZA ACTIVITY

During week 48, the following influenza activity was reported:

- Local influenza activity was reported by one state (Virginia).
- Sporadic influenza activity was reported by the District of Columbia, Guam, Puerto Rico, and 30 states (Alaska, California, Colorado, Connecticut, Florida, Georgia, Hawaii, Indiana, Iowa, Kentucky, Louisiana, Massachusetts, Minnesota, Mississippi, Montana, Nebraska, Nevada, New Mexico, New York, North Carolina, North Dakota, Ohio, Oregon, Pennsylvania, Rhode Island, South Carolina, Texas, Utah, Wisconsin, and Wyoming).
- No influenza activity was reported by the U.S. Virgin Islands and 19 states (Alabama, Arizona, Arkansas, Delaware, Idaho, Illinois, Kansas, Maine, Maryland, Michigan, Missouri, New Hampshire, New Jersey, Oklahoma, South Dakota, Tennessee, Vermont, Washington, and West Virginia).



Questions/Comments?

Amanda Mehl, MPH
Epidemiologist
Health Promotion and Protection
Winnebago County
Health Department
401 Division Street
Rockford, IL 61104
815-720-4215



Public Health
Prevent. Promote. Protect.

ILI Activity Level (Influenza like Illnesses reported Week 48)

Illinois is **MINIMAL** on the scale