



Winnebago County Health Department



Weekly Influenza Surveillance Report CDC Week 49 December 4th-December 10th, 2011

In Brief:

Mortality

Confirmed deaths from Pneumonia/Influenza Week 49: **1**
Percent of deaths due to Pneumonia/Influenza Week 49: **1.61%**

Influenza-Like Illness Surveillance

Sentinel Site ILI rate -Week 49 ending December 10th: **0.27%**

Pneumonia Hospital Admissions

Week 49 Ending December 10th: **24**
Previous Week 48 Ending December 3rd: **26**
Note: Numbers include 2 hospitals and are one week behind due to reporting methods.

School Attendance

Week 48 Ending December 10th: **99.55%**

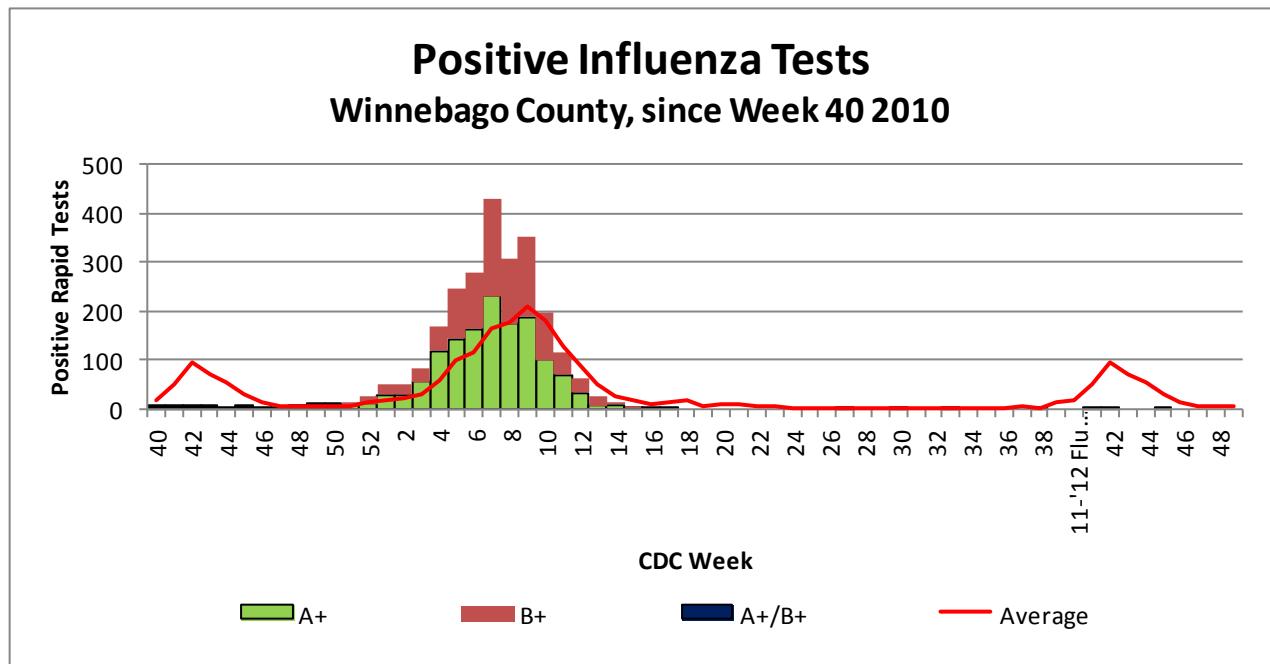


Figure 1 displays the current number of rapid flu cases reported to our department and broken down by influenza sub-typing compared to a 4-year historical average (the red line). 6 total A positive rapid flu cases have been reported for the 2011-12 flu season. No cases have been reported for Week 49 which is below the historical average of 4.33 cases.

Weekly Percentage of Visits as Identified by Essence

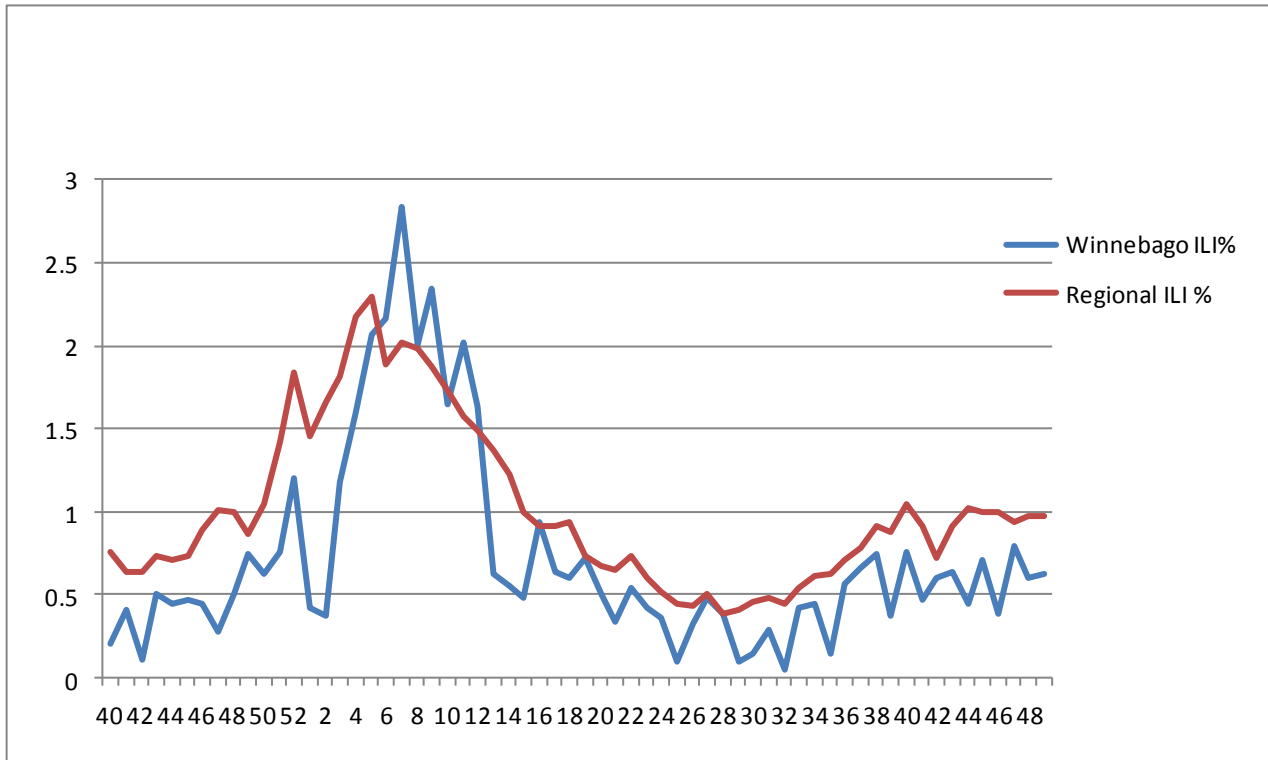


Figure 2 displays the weekly percentage of Influenza-Like Illness (ILI) as identified by the Essence Syndromic Surveillance System. The blue line shows percentage of ILI Emergency Department visits in Winnebago County from our two participating hospitals and the red line shows the regional ILI percentage for all counties participating in ESSENCE. For CDC Week 49, Winnebago county reported an ILI percent of **0.63 (only one hospital reporting)**, slightly below the regional ILI percent of **0.98**.

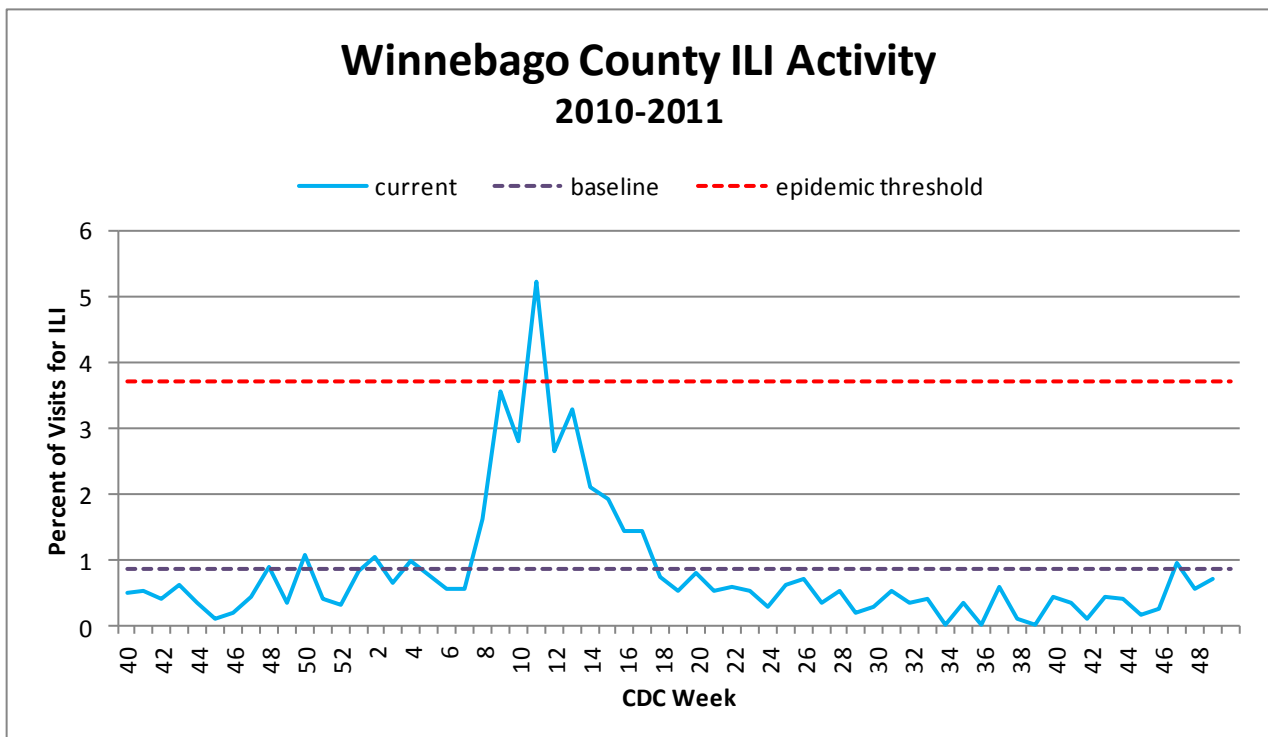


Figure 3 is the representation of all visits from our sentinel sites not participating in Essence for ILI. ILI activity among the three sites for CDC Week 49 was 0.27 %.

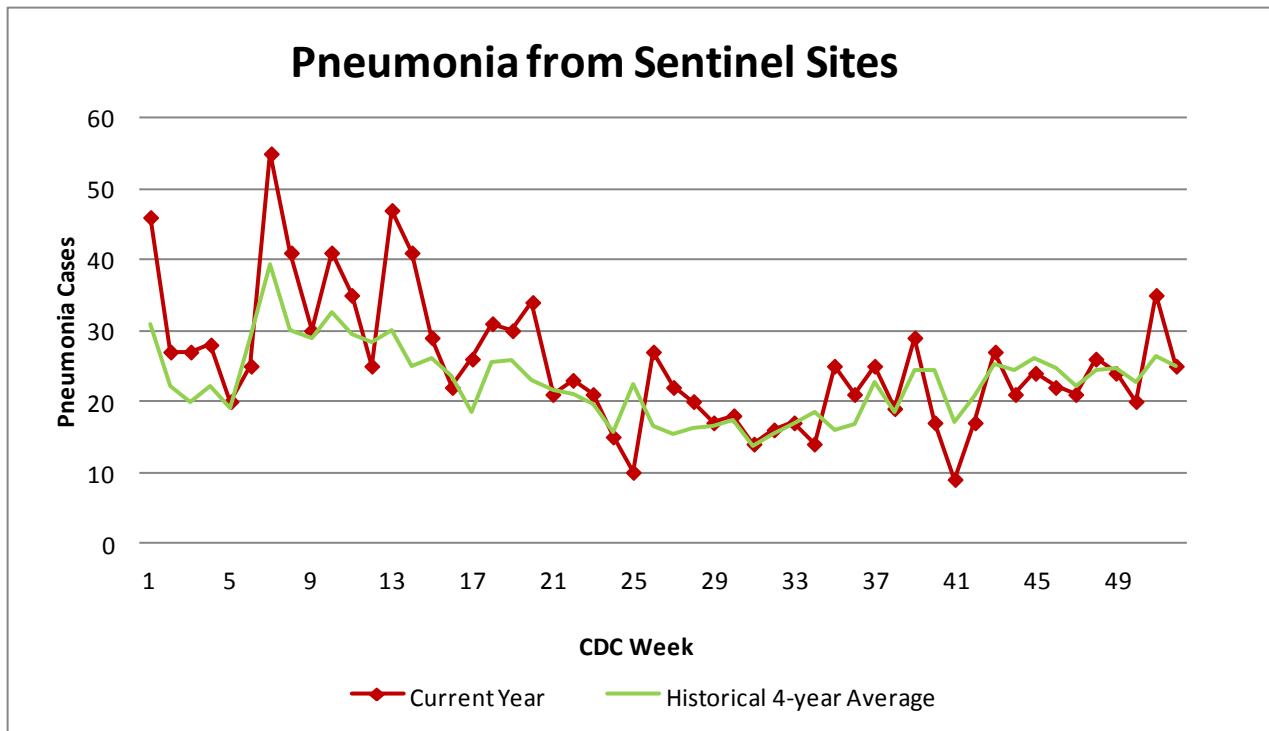


Figure 4 compares the current number of pneumonia hospital admissions (red line) against the 4-year historical average (the green line). For CDC Week 49, we are almost at the 4-year historical average of 24.75 with 24 total hospital admittances reported. Note that all data are preliminary and numbers for weeks 47, 48, and 49 for 2011 are still arriving.

Outside the County:

Illinois influenza activity (as of Week 49):

Illinois reported NO INFLUENZA ACTIVITY

During week 49, the following influenza activity was reported:

- Local influenza activity was reported by three states (Alabama, Colorado, and Virginia).
- Sporadic influenza activity was reported by Guam, Puerto Rico, and 32 states (Alaska, Arkansas, California, Connecticut, Florida, Georgia, Hawaii, Indiana, Iowa, Kentucky, Louisiana, Massachusetts, Michigan, Minnesota, Mississippi, Montana, Nebraska, Nevada, New Mexico, New York, North Carolina, North Dakota, Ohio, Pennsylvania, Rhode Island, South Carolina, South Dakota, Texas, Utah, Washington, West Virginia, and Wisconsin).
- No influenza activity was reported by the District of Columbia, the U.S. Virgin Islands, and 15 states (Arizona, Delaware, Idaho, Illinois, Kansas, Maine, Maryland, Missouri, New Hampshire, New Jersey, Oklahoma, Oregon, Tennessee, Vermont, and Wyoming).



Questions/Comments?

Amanda Mehl, MPH
Epidemiologist
Health Promotion and Protection
Winnebago County
Health Department
401 Division Street
Rockford, IL 61104
815-720-4215



Public Health
Prevent. Promote. Protect.

ILI Activity Level (Influenza like Illnesses reported Week 49)

Illinois is **MINIMAL** on the scale