



Winnebago County Health Department



Weekly Influenza Surveillance Report CDC Week 50 December 11th-December 17th, 2011

In Brief:

Mortality

Confirmed deaths from Pneumonia/Influenza Week 50: **2**

Percent of deaths due to Pneumonia/Influenza Week 50: **4.76%**

Influenza-Like Illness Surveillance

Sentinel Site ILI rate -Week 50 ending December 10th: **0.58%**

(only 2 sites reporting)

Pneumonia Hospital Admissions

Week 50 Ending December 17th: **24**

Previous Week 49 Ending December 10th: **26**

Note: Numbers include 2 hospitals and are one week behind due to reporting methods.

School Attendance

Week 50 Ending December 17th: **99.55%**

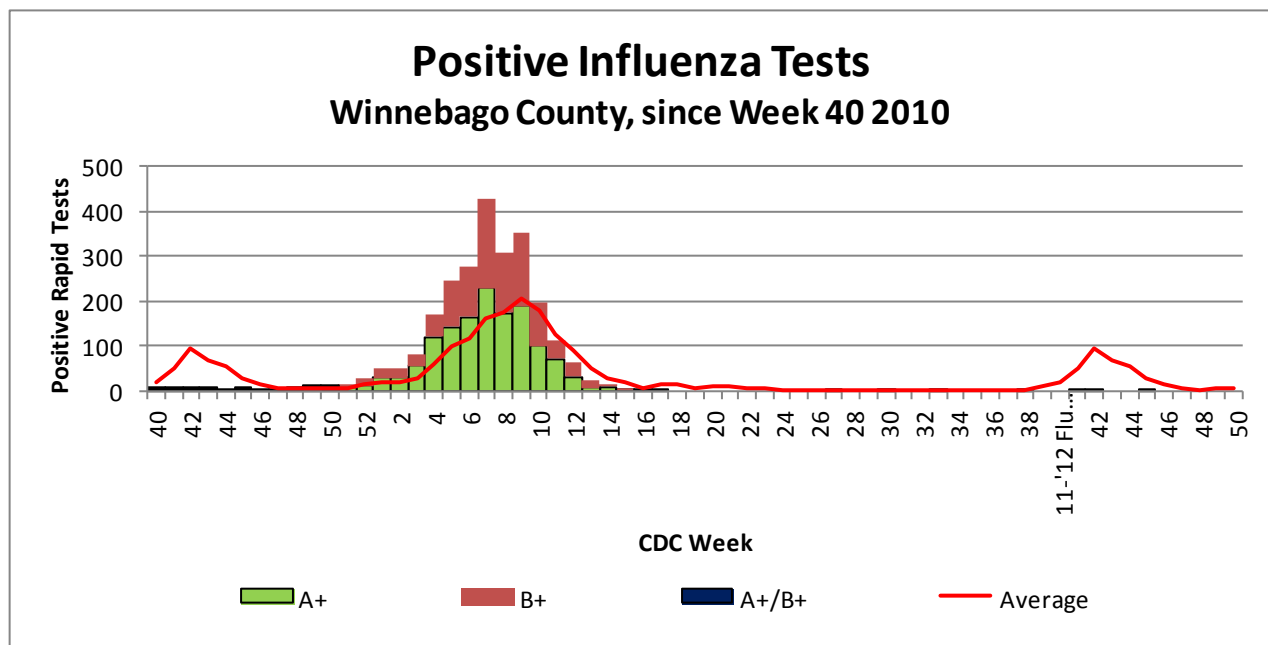


Figure 1 displays the current number of rapid flu cases reported to our department and broken down by influenza sub-typing compared to a 4-year historical average (the red line). 6 total A positive rapid flu cases have been reported for the 2011-12 flu season. No cases have been reported for Week 50 which is below the historical average of 4 cases.

Weekly Percentage of Visits as Identified by Essence

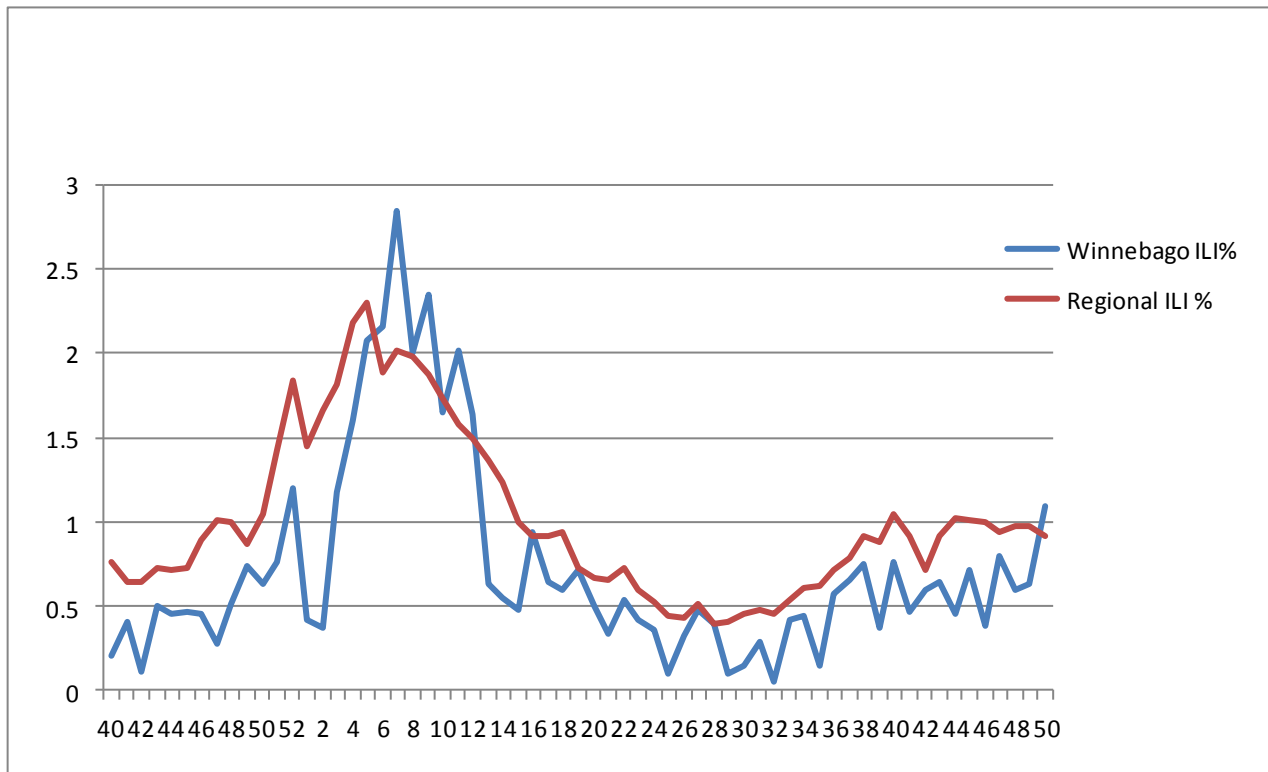
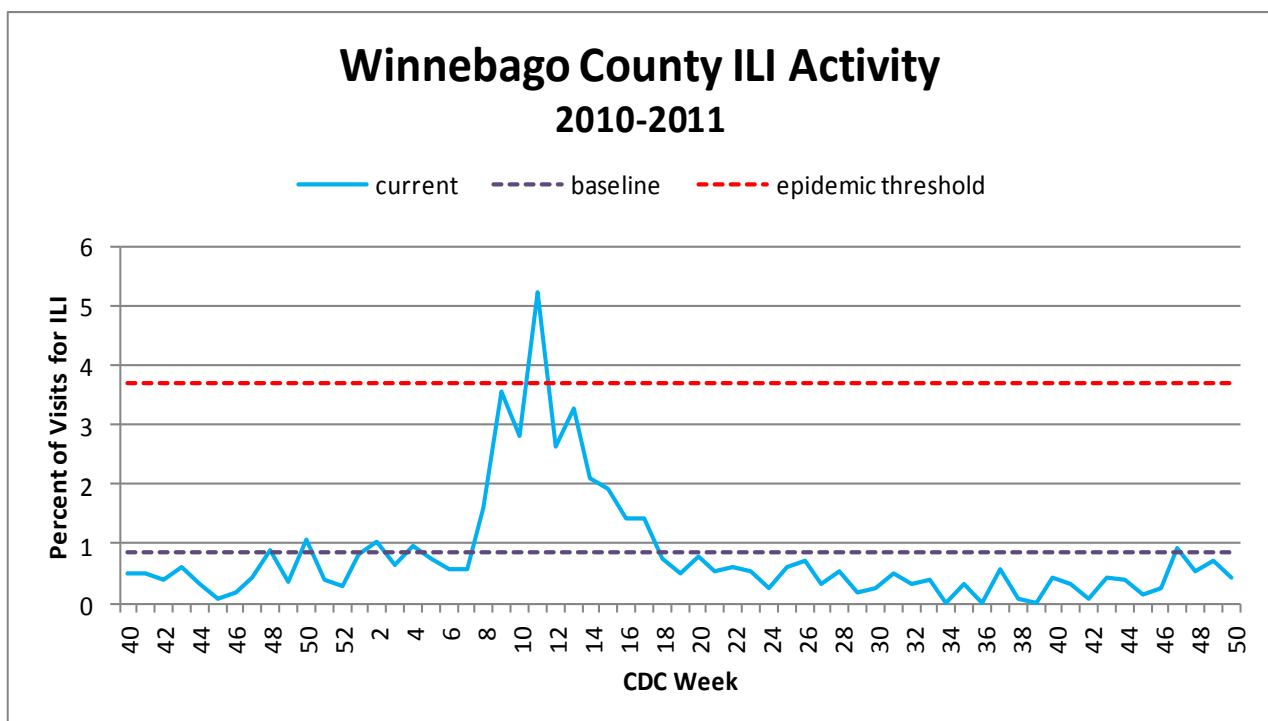


Figure 2 displays the weekly percentage of Influenza-Like Illness (ILI) as identified by the Essence Syndromic Surveillance System. The blue line shows percentage of ILI Emergency Department visits in Winnebago County from our two participating hospitals and the red line shows the regional ILI percentage for all counties participating in ESSENCE. For CDC Week 50, Winnebago County reported an ILI percent of **1.09 (only one hospital reporting)**, higher than the regional ILI percent of **0.91**.



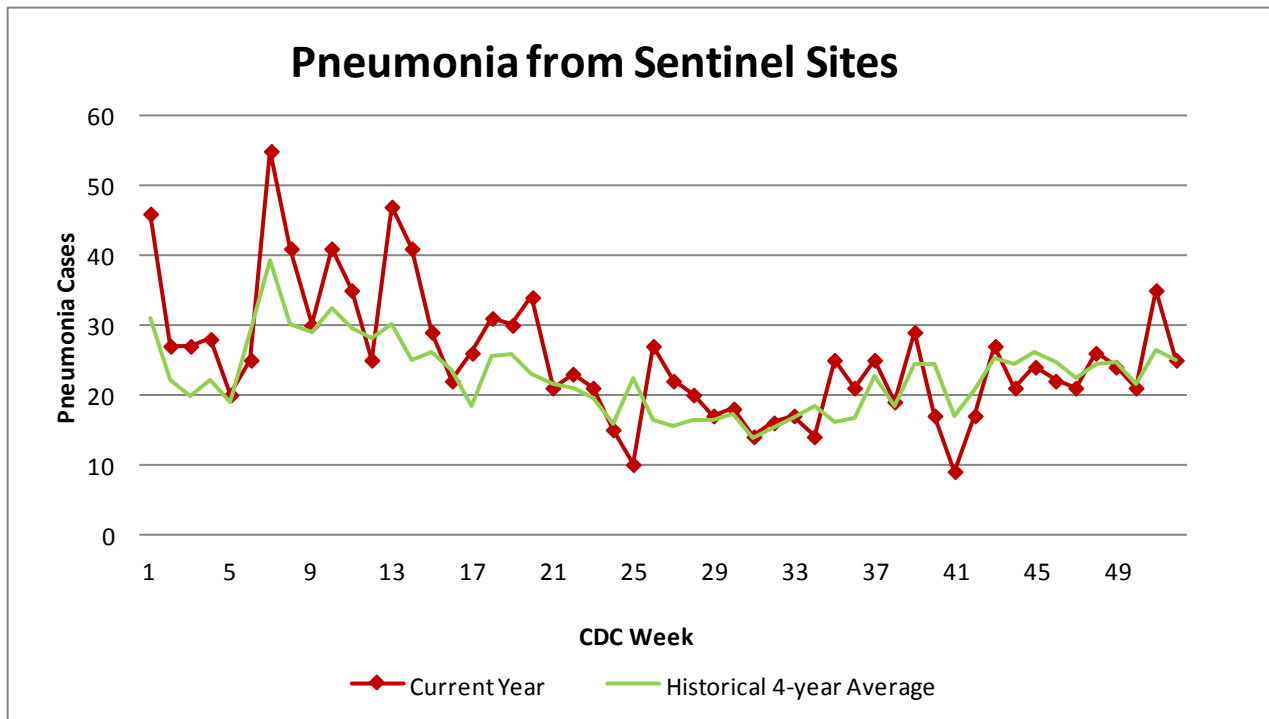


Figure 4 compares the current number of pneumonia hospital admissions (red line) against the 4-year historical average (the green line). For CDC Week 50, we are almost at the 4-year historical average of 21.5 with 21 total hospital admittances reported. Note that all data are preliminary and numbers for weeks 48, 49, and 50 for 2011 are still arriving.

Outside the County:

Illinois influenza activity (as of Week 50):

Illinois reported NO INFLUENZA ACTIVITY

During week 50, the following influenza activity was reported:

- Local influenza activity was reported by two states (Alabama and Virginia).
- Sporadic influenza activity was reported by Guam, Puerto Rico, and 37 states (Arizona, Arkansas, California, Colorado, Connecticut, Florida, Georgia, Hawaii, Idaho, Indiana, Iowa, Kansas, Kentucky, Louisiana, Massachusetts, Michigan, Minnesota, Mississippi, Montana, Nebraska, Nevada, New Mexico, New York, North Carolina, North Dakota, Ohio, Oregon, Pennsylvania, Rhode Island, South Carolina, Tennessee, Texas, Utah, Vermont, Washington, Wisconsin, and Wyoming).
- No influenza activity was reported by the District of Columbia, the U.S. Virgin Islands, and 11 states (Alaska, Delaware, Illinois, Maine, Maryland, Missouri, New Hampshire, New Jersey, Oklahoma, South Dakota, and West Virginia).



Questions/Comments?

Amanda Mehl, MPH
Epidemiologist
Health Promotion and Protection
Winnebago County
Health Department
401 Division Street
Rockford, IL 61104
815-720-4215



Public Health
Prevent. Promote. Protect.

ILI Activity Level (Influenza like Illnesses reported Week 50)

Illinois is **MINIMAL** on the scale