



Weekly Influenza Surveillance Report CDC Week 51 December 18th-December 24th, 2011

In Brief:

Mortality

Confirmed deaths from Pneumonia/Influenza Week 51: **4**

Percent of deaths due to Pneumonia/Influenza Week 51: **9.75%**

Influenza-Like Illness Surveillance

Sentinel Site ILI rate -Week 51 ending December 24th: **0.71%**

(only 2 sites reporting)

Pneumonia Hospital Admissions

Week 51 Ending December 24th: **23**

Previous Week 50 Ending December 17th: **29**

Note: Numbers include 2 hospitals and are one week behind due to reporting methods.

School Attendance

Week 51 Ending December 24th: **RP\$ 205 on Winter Break.**

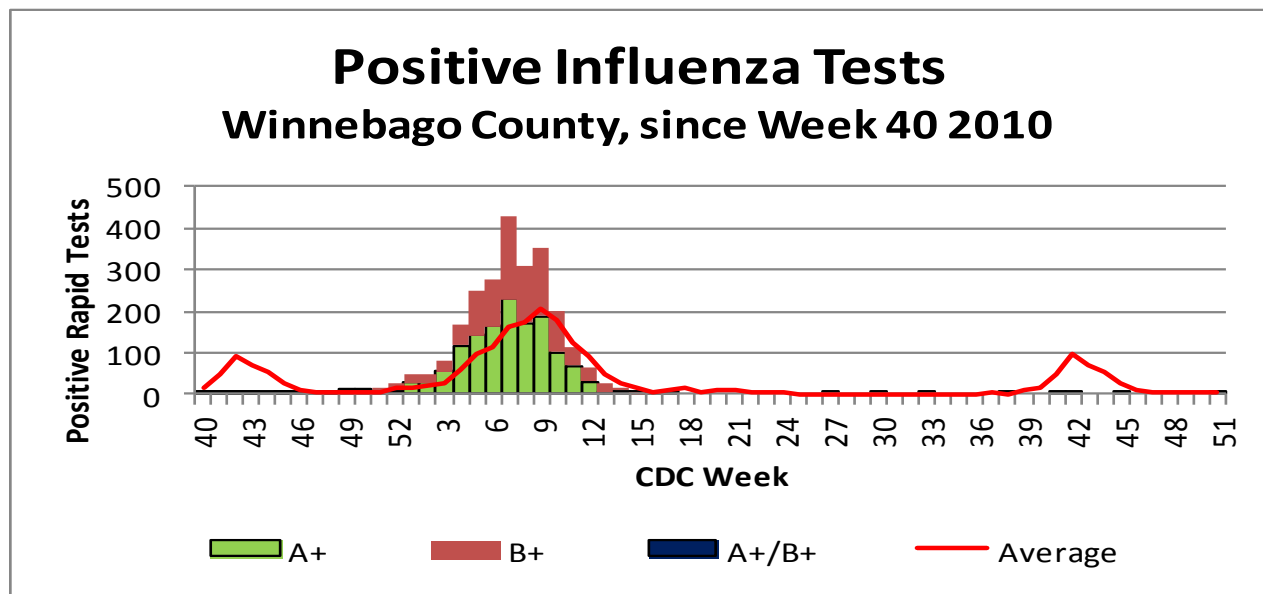


Figure 1 displays the current number of rapid flu cases reported to our department and broken down by influenza sub-typing compared to a 4-year historical average (the red line). 7 total A positive rapid flu cases have been reported for the 2011-12 flu season. One case of Influenza A been reported for Week 51 which is below the historical average of 4.5 cases.

Weekly Percentage of Visits as Identified by Essence

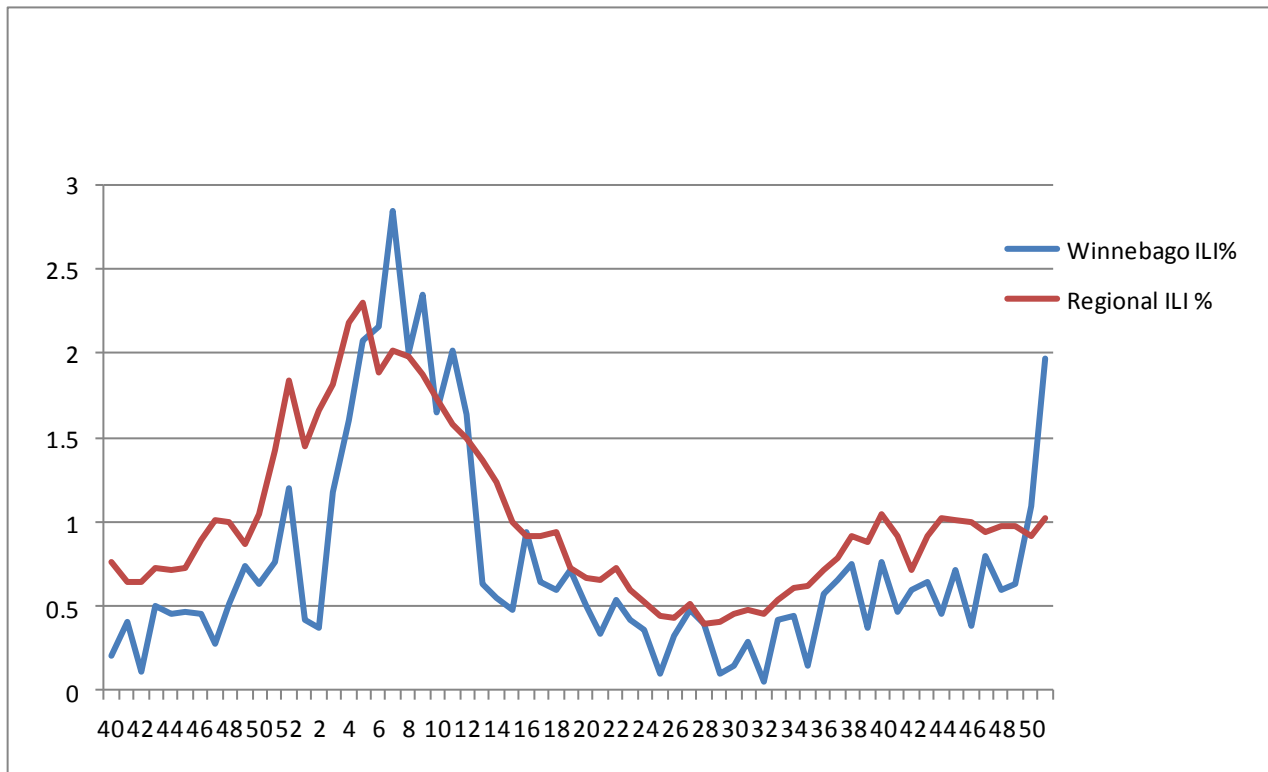


Figure 2 displays the weekly percentage of Influenza-Like Illness (ILI) as identified by the Essence Syndromic Surveillance System. The blue line shows percentage of ILI Emergency Department visits in Winnebago County from our two participating hospitals and the red line shows the regional ILI percentage for all counties participating in ESSENCE. For CDC Week 51, Winnebago County reported an ILI percent of **1.97 (only one hospital reporting)**, higher than the regional ILI percent of **1.02**.

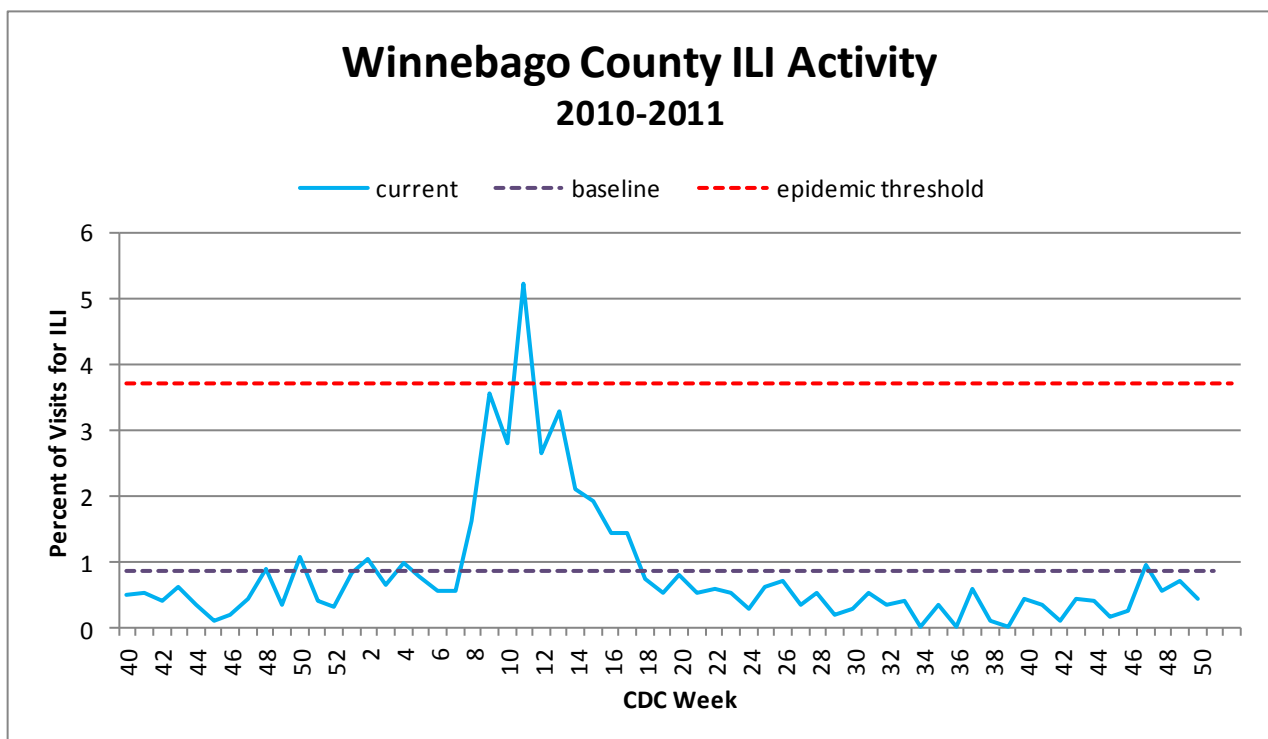


Figure 3 is the representation of all visits from our sentinel sites not participating in Essence for ILI. ILI activity among the three sites for CDC Week 51 was 0.71%. Only 2 sites reported ILI rates for this week.

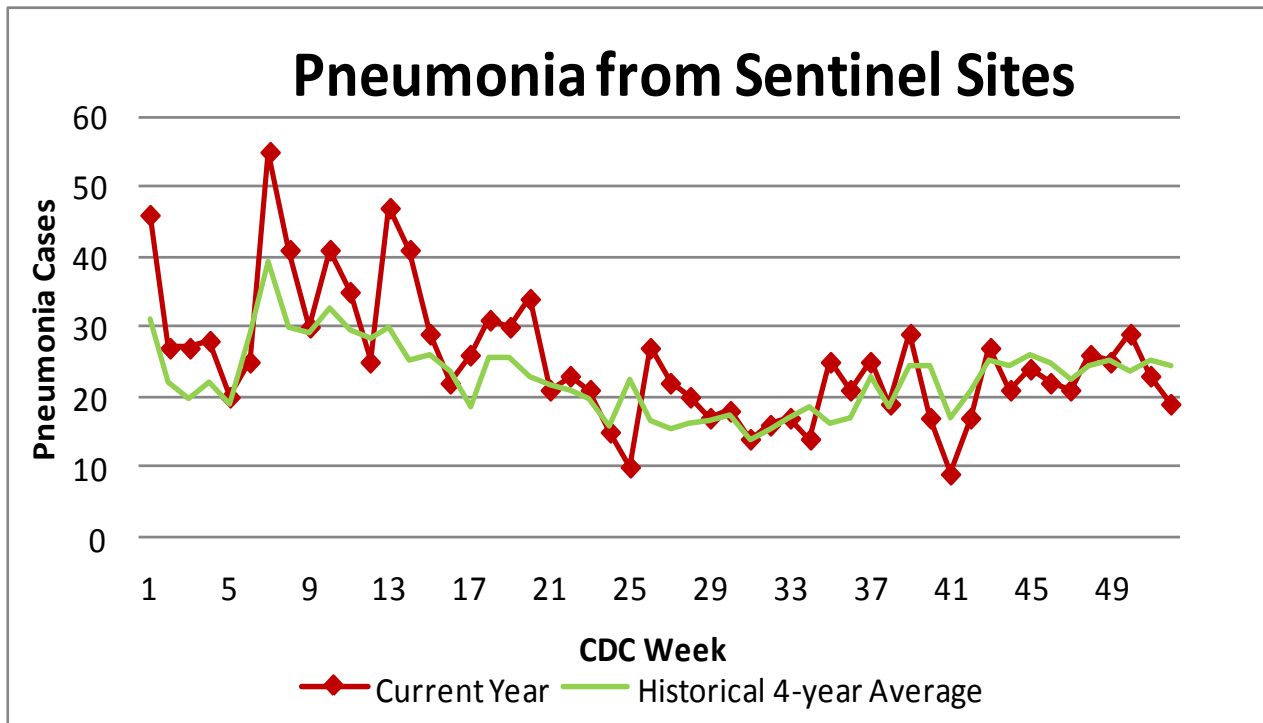


Figure 4 compares the current number of pneumonia hospital admissions (red line) against the 4-year historical average (the green line). For CDC Week 51, we are below the 4-year historical average of 25 with 23 total hospital admittances reported. Note that all data are preliminary and numbers for weeks 49, 50, and 51 for 2011 are still arriving.

Outside the County:

Illinois influenza activity (as of Week 51):

Illinois reported NO INFLUENZA ACTIVITY

During week 51, the following influenza activity was reported:

During week 51, the following influenza activity was reported:

- Regional influenza activity was reported by one state (Colorado).
- Local influenza activity was reported by two states (Alabama and Virginia).
- Sporadic influenza activity was reported by Guam, and 37 states (Alaska, Arizona, Arkansas, California, Connecticut, Florida, Georgia, Hawaii, Idaho, Indiana, Iowa, Kansas, Kentucky, Louisiana, Maine, Massachusetts, Michigan, Minnesota, Mississippi, Montana, Nebraska, Nevada, New Mexico, New York, North Carolina, Ohio, Oregon, Pennsylvania, Rhode Island, South Carolina, Tennessee, Texas, Utah, Vermont, Washington, Wisconsin, and Wyoming).
- No influenza activity was reported by the District of Columbia, the U.S. Virgin Islands, and 10 states (Delaware, Illinois, Maryland, Missouri, New Hampshire, New Jersey, North Dakota, Oklahoma, South Dakota, and West Virginia).
- Puerto Rico did not report.

ILI Activity Level (Influenza like Illnesses reported Week 51)

Illinois is **MINIMAL** on the scale



Questions/Comments?

Amanda Mehl, MPH
Epidemiologist
Health Promotion and Protection
Winnebago County
Health Department
401 Division Street
Rockford, IL 61104
815-720-4215



Public Health
Prevent. Promote. Protect.