

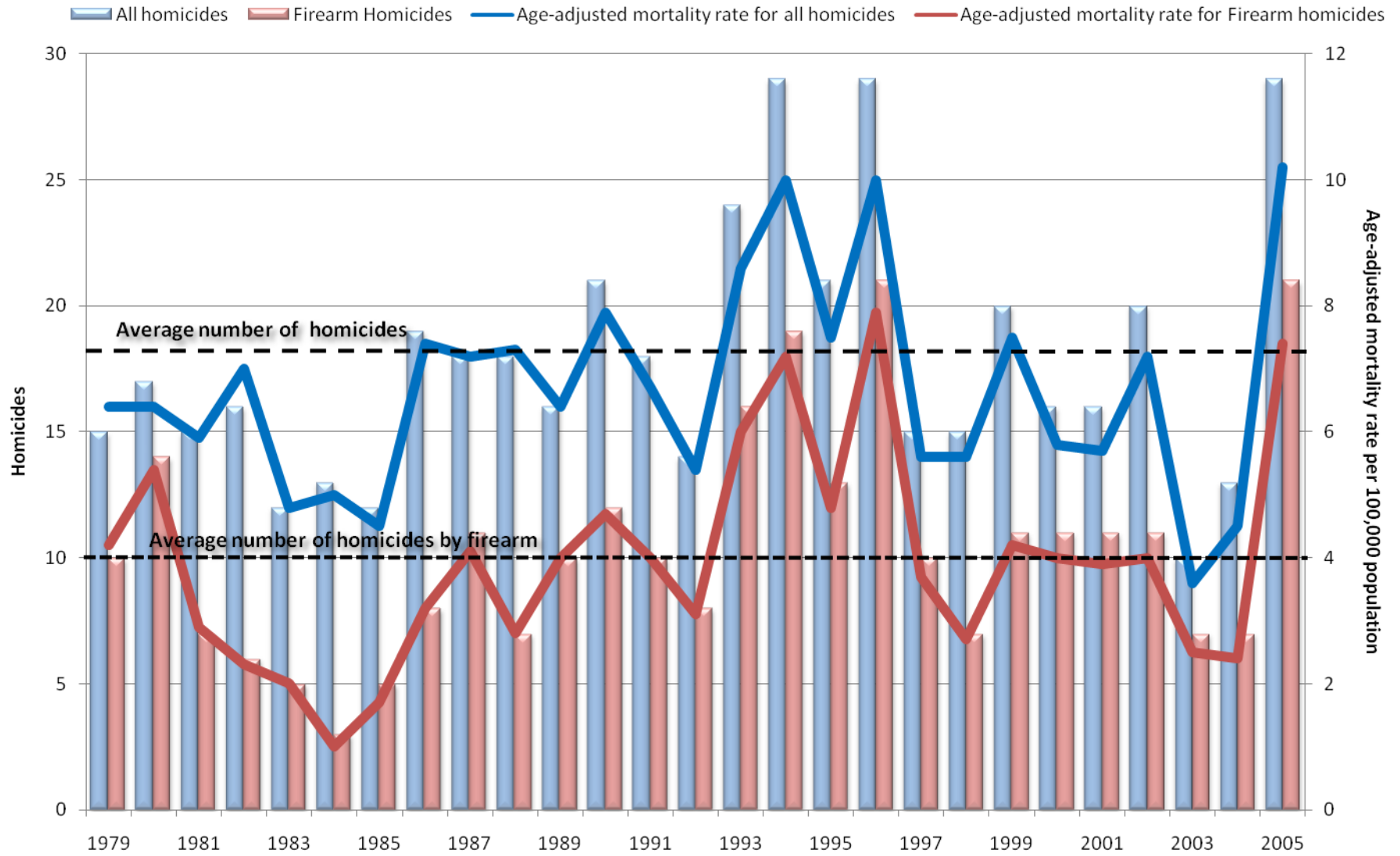
1979-2005 Winnebago County Homicide & Suicide Trends

Winnebago County Health Department

Prepared by:
Kristen Harrison, M.P.H.
Epidemiologist

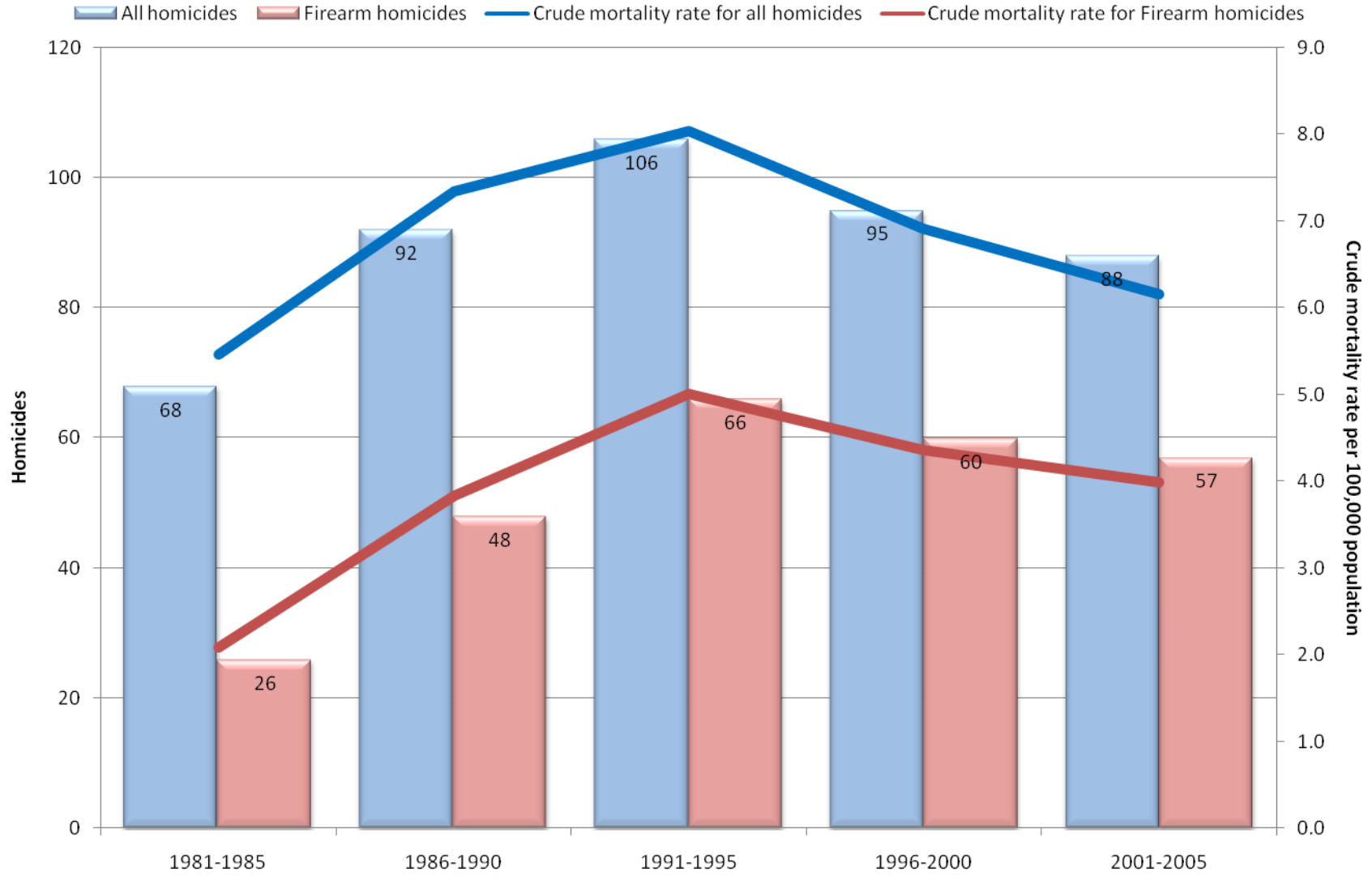
This report summarizes homicide and suicide trends from 1979 to 2005 collected through mortality records. Annual trends were represented by counts of homicides and suicides annually and by age-adjusted mortality rates. Five-year trends were also included for both homicides and suicides by counts and crude mortality rates for an easier and more general understanding of the time trends. Homicides and suicides by firearm were also included.

1979-2005 Winnebago County Homicides



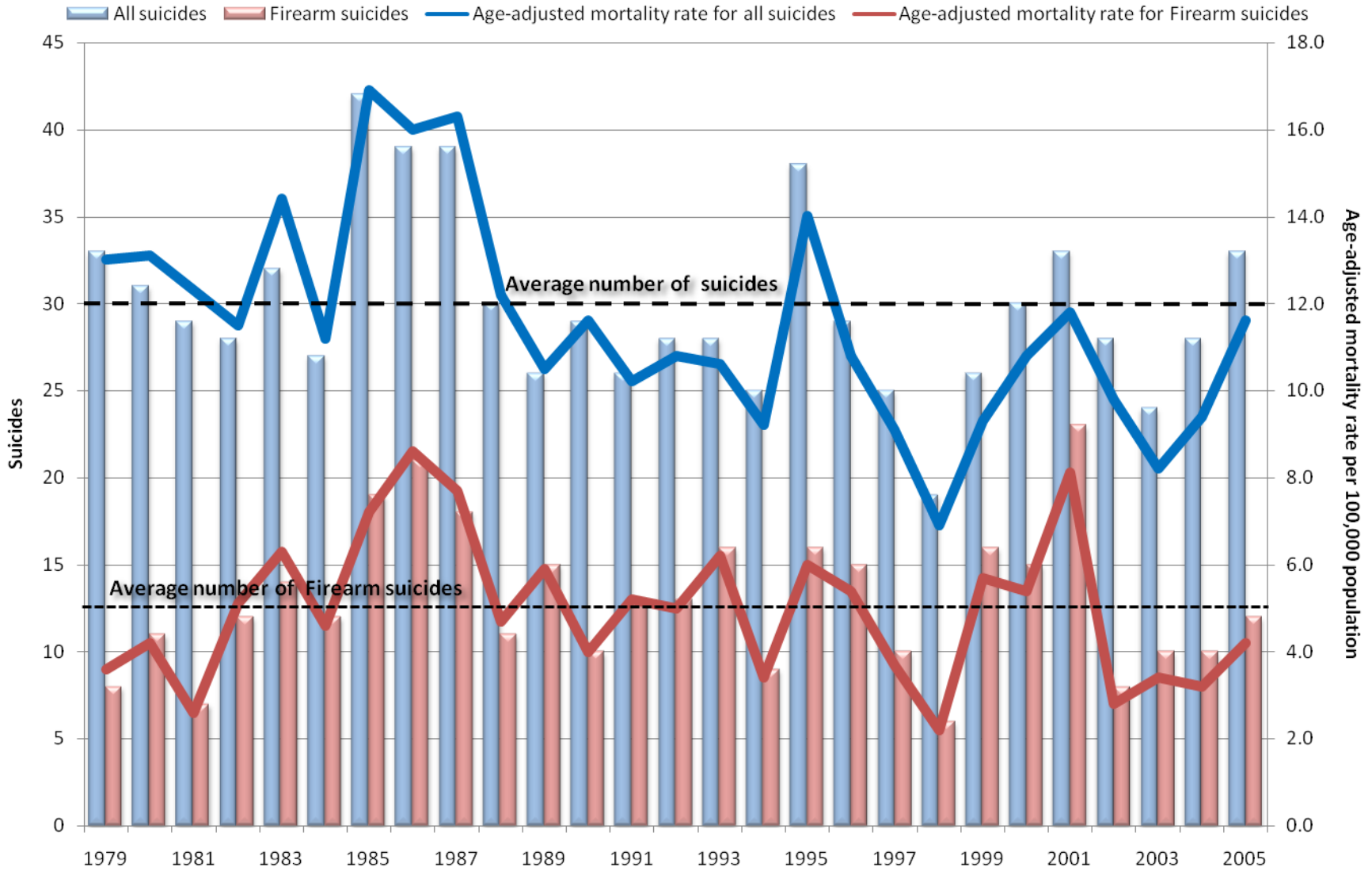
Source: CDC, NCHS

1981-2005 Winnebago County Five-year Homicides



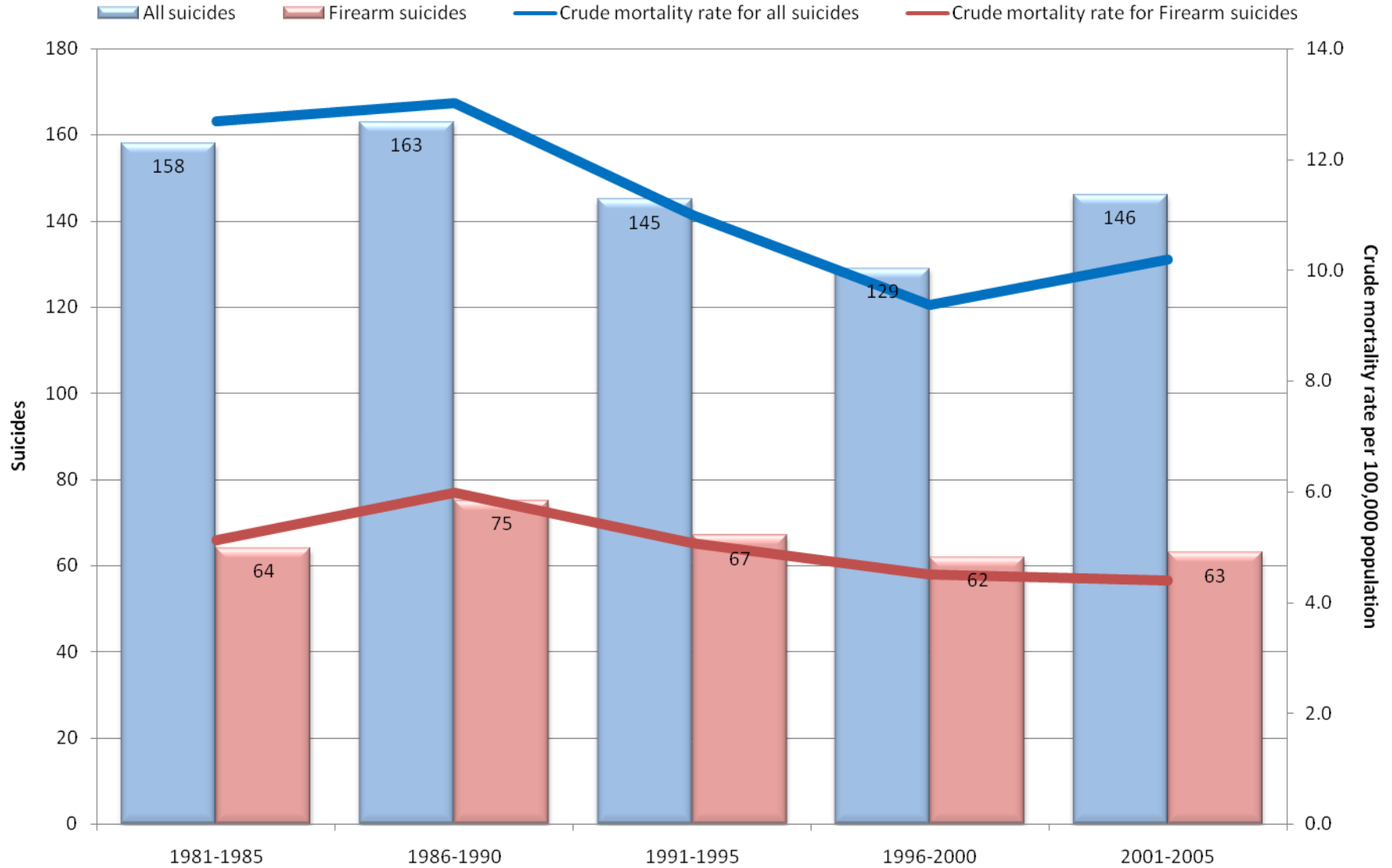
Source: CDC, NCHS

1979-2005 Winnebago County Suicides



Source: CDC, NCHS

1981-2005 Winnebago County Five-year Suicides



Source: CDC, NCHS

Sources

Centers for Disease Control and Prevention, National Center for Health Statistics. Compressed Mortality File 1979-1998. CDC WONDER On-line Database, compiled from Compressed Mortality File CMF 1968-1988, Series 20, No. 2A, 2000 and CMF 1989-1998, Series 20, No. 2E, 2003. Accessed at <http://wonder.cdc.gov/cmfi-icd9.html> on Dec 9, 2008

Centers for Disease Control and Prevention, National Center for Health Statistics. Compressed Mortality File 1999-2005. CDC WONDER On-line Database, compiled from Compressed Mortality File 1999-2005 Series 20 No. 2K, 2008. Accessed at <http://wonder.cdc.gov/cmfi-icd10.html> on Dec 8, 2008

*If you have any questions regarding this report, please contact:
Kristen Harrison, M.P.H.
Winnebago County Health Department
401 Division St
Rockford, IL 61104
(815)720-4216
KHarrison@wchd.org*