

# Influenza

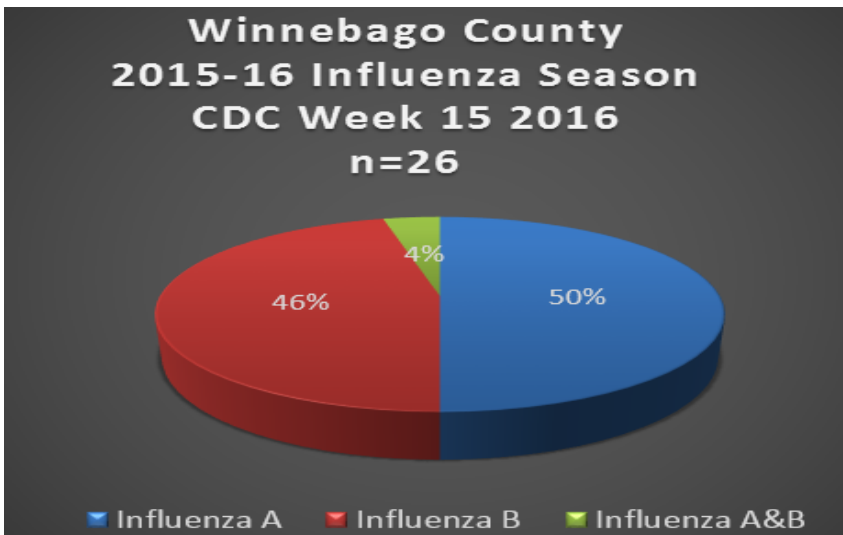
## SURVEILLANCE REPORT

### CDC Week 15: April 10 – April 16, 2016

**Weekly Influenza Activity Summary:** Influenza surveillance for Winnebago County involves the weekly collection of data from hospitals, physicians and laboratories. The current level of influenza activity has increased by two (2) cases from the previous week. The graphic displays indicate the incidence of influenza and populations affected for Week 15. Thank you to all of the surveillance partners for their help in collecting this information.

The Health Department recommends the continued efforts in the promotion of the three C's in helping prevent the spread of influenza in our community:

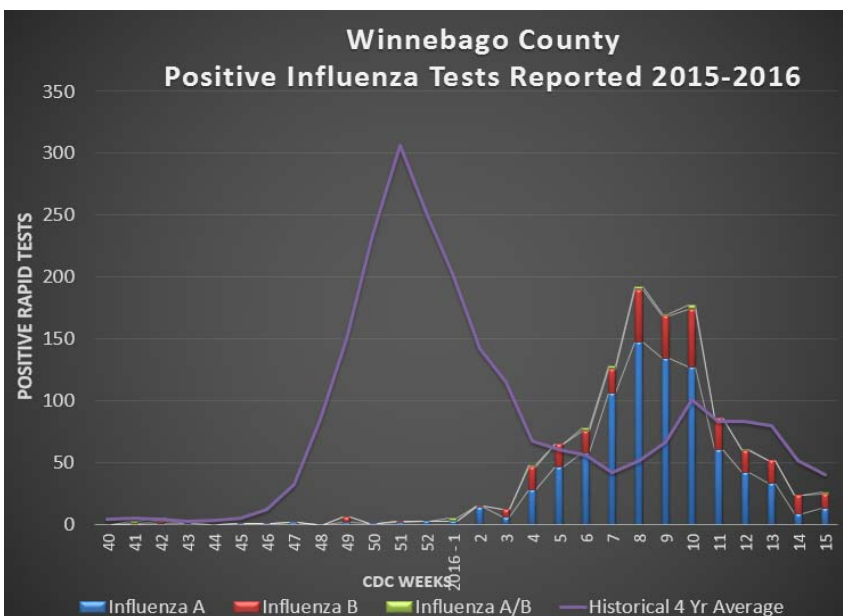
- ✓ **CLEAN** - Wash your hands
- ✓ **COVER** - Cover your cough and sneeze
- ✓ **CONTAIN** - Contain your germs, stay home if you are sick



← Figure 1: Illustrates the total number of cases along with the “type” of influenza reported during the surveillance week.

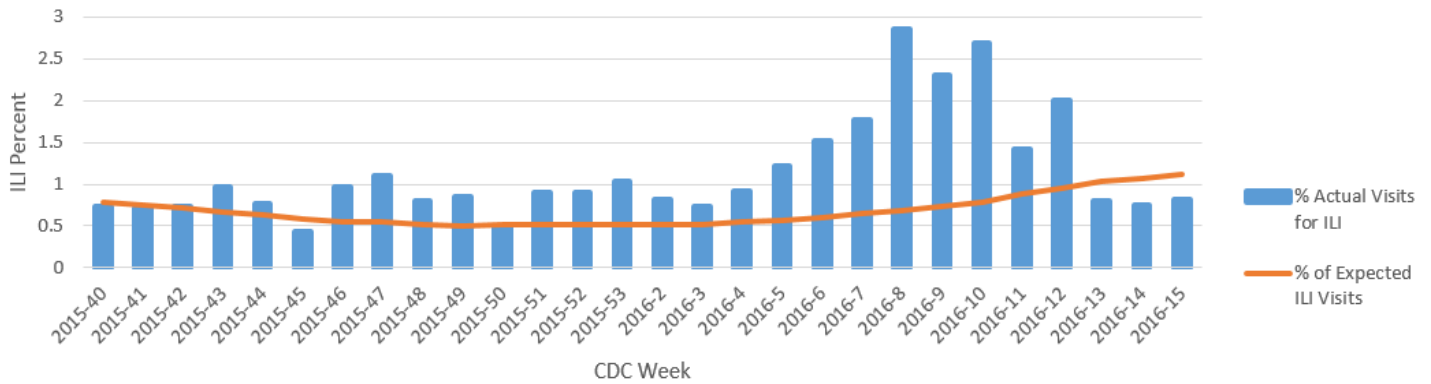
Total Number of Cases for the Week By Age Distribution			
Age Range	Influenza A	Influenza B	Influenza A&B
0-4	3	2	1
5-17	2	3	0
18-64	7	6	0
65+	1	1	0
<b>Totals CDC Week 15</b>	<b>13</b>	<b>12</b>	<b>1</b>

← Figure 2: Illustrates the total number of cases reported during the current Influenza Surveillance Period. The four year historical average for the County is noted by the purple line on the graph.

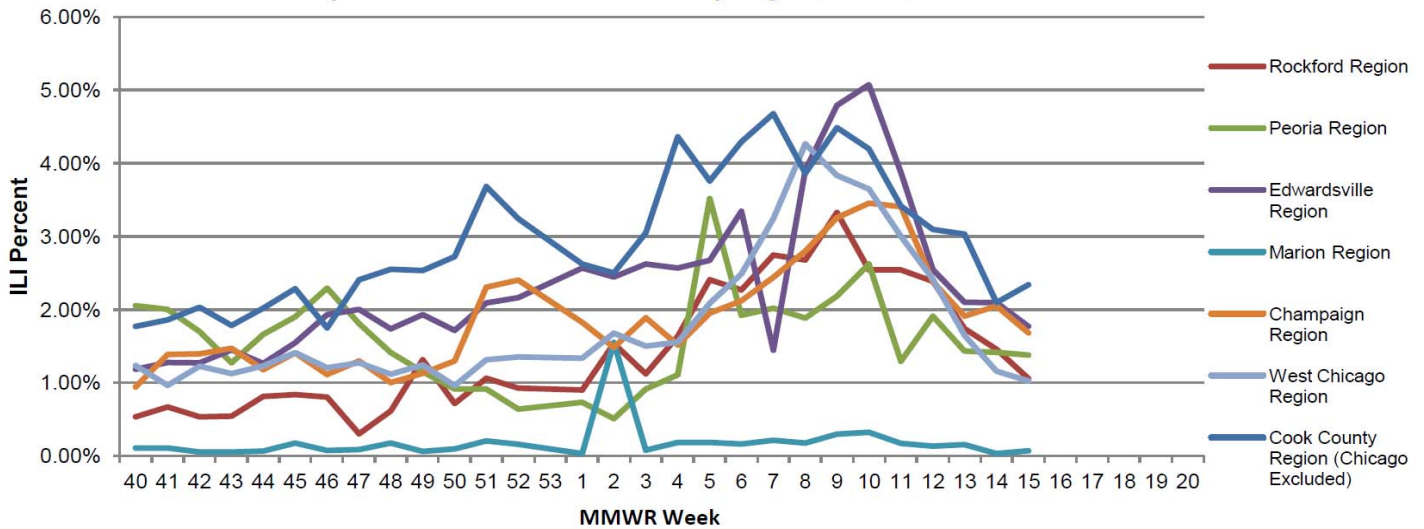


# Influenza Like Illness (ILI) Reported on a Local, State & National Levels

Percent of ILI Reported from Sentinel Providers in Winnebago County, Influenza Season 2015-2016



Percent of ILI Reported From Sentinel Providers by Region, Illinois, Influenza Season 2015-2016

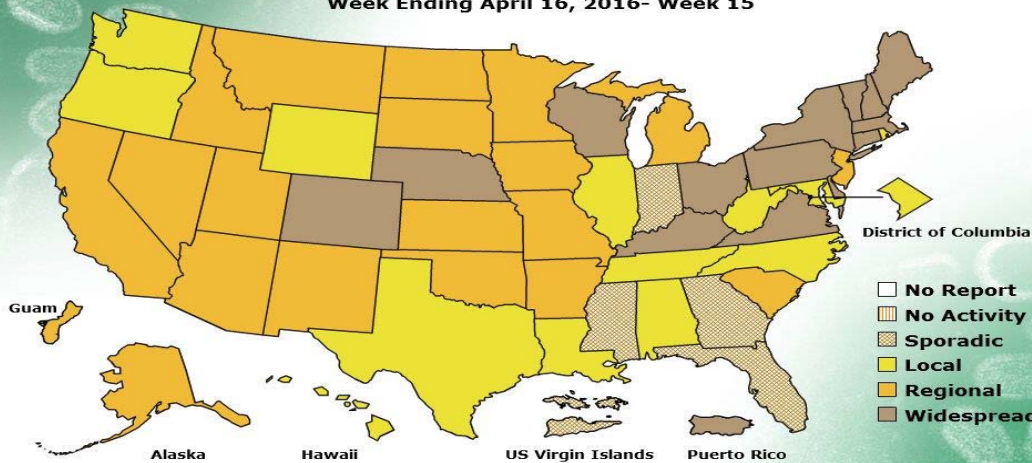


## FLUVIEW



A Weekly Influenza Surveillance Report Prepared by the Influenza Division  
Weekly Influenza Activity Estimates Reported by State and Territorial Epidemiologists\*

Week Ending April 16, 2016- Week 15



\*This map indicates geographic spread and does not measure the severity of influenza activity.