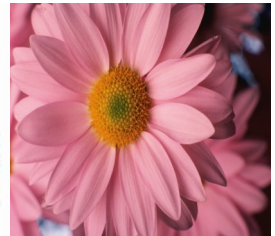




# Winnebago County Health Department



## Weekly Influenza Surveillance Report CDC Week 12 March 20-26 2011

### In Brief:

#### ***Mortality***

Confirmed deaths from Pneumonia/Influenza Week 12: **5**

Percent of deaths due to Pneumonia/Influenza: **7.94%**

Baseline—**1.8%**, Epidemic—**7.9%**

#### ***School Attendance***

Sentinel Attendance – All Schools – Week of 03/21 – 03/25: **91.62%**

#### ***Influenza-Like Illness Surveillance***

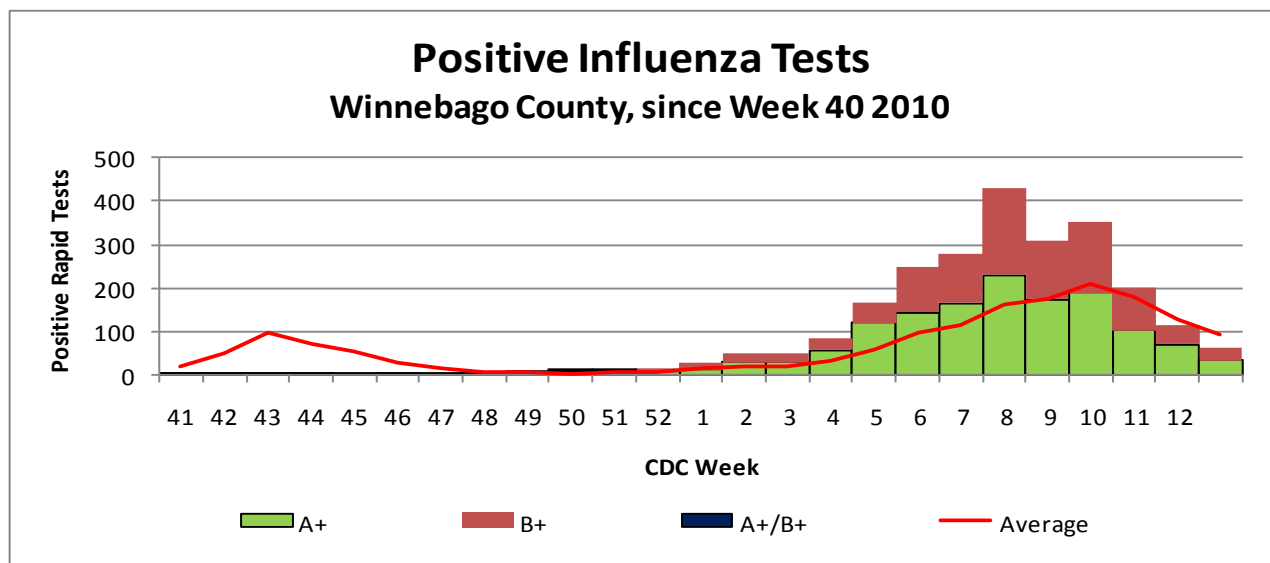
Sentinel Site ILI rate (average of 3 sites participating)—week ending March 26th: **1.42%**

#### ***Pneumonia Hospital Admissions***

Week Ending March 26th: **23**

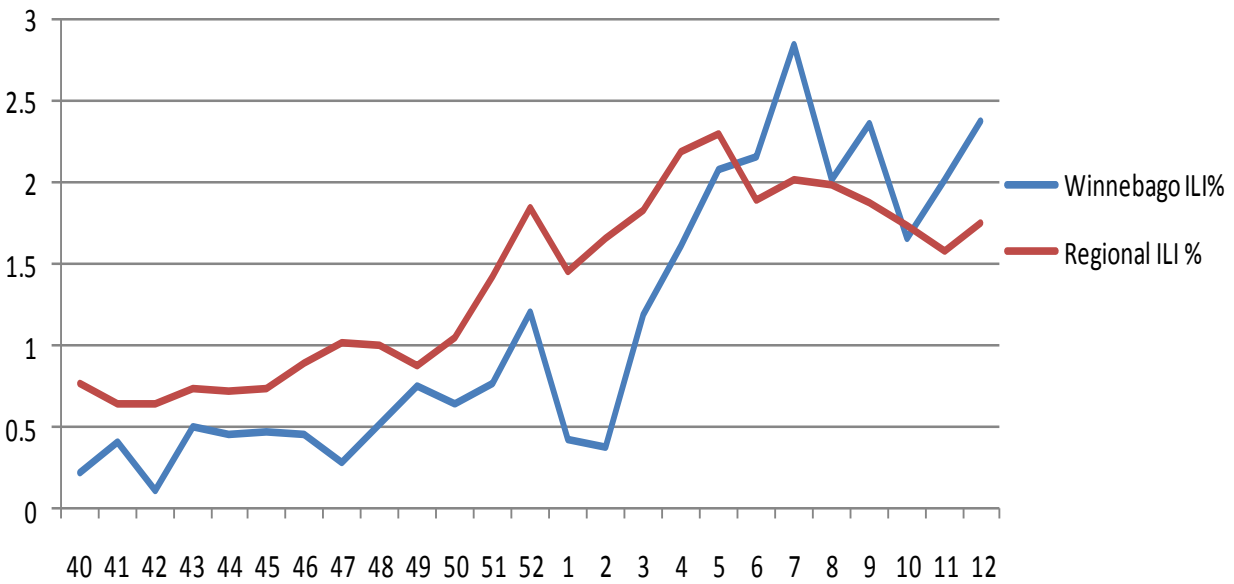
Previous Week Ending March 19th: **35**

Note: Numbers include 2 hospitals and are one week behind due to reporting methods.



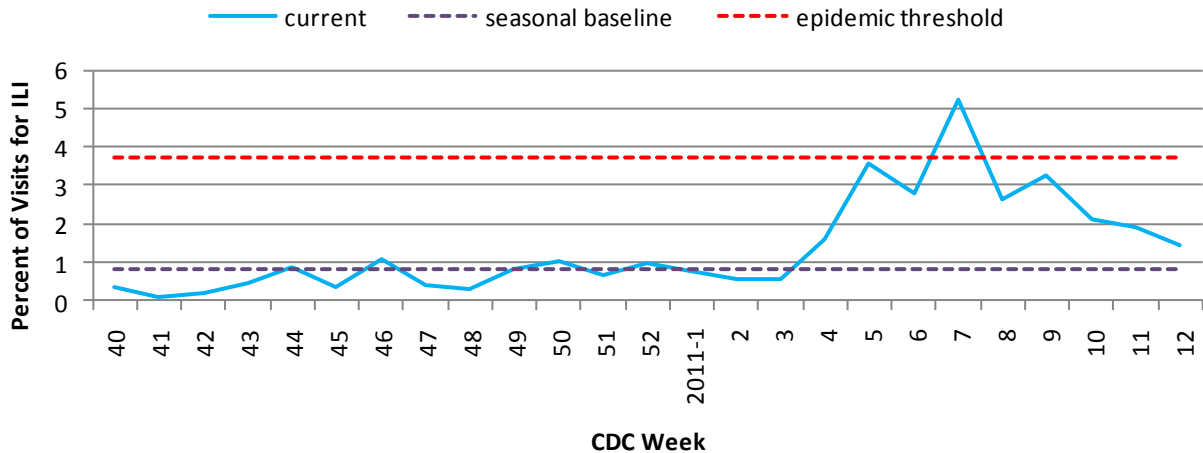
**Figure 1** displays the current number of rapid flu cases reported to our department for the 2010-2011 flu season (broken down by influenza sub-typing) compared to a 4-year historical average (the red line). Ending numbers for CDC week 12 in Winnebago County show 2456 total positive rapid flu reported for this flu season. For the first time this calendar year, we are below the 4-year average for flu cases in our county. The historical average for Week 12 is currently 91.5 while our reported cases show well below that at 64 total for this week. We are continuing to see a decrease in positive cases reported in the community.

## Weekly Percentage of Visits as Identified by Essence

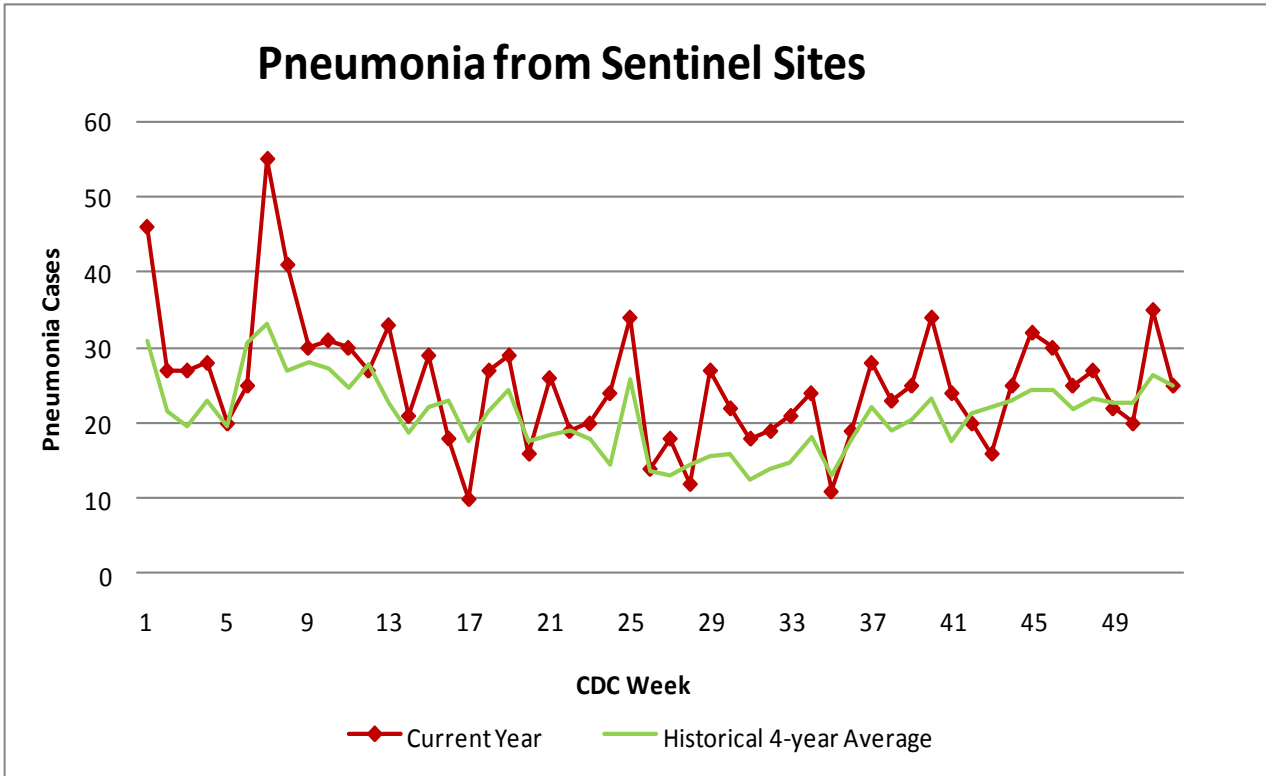


**Figure 2** displays the weekly percentage of ILI as identified by Essence. The blue line shows percentage of ILI Emergency Department visits in Winnebago County from our two participating hospitals and the red line shows the regional ILI percentage for all counties participating in the Essence Syndromic Surveillance System. As of CDC Week 12 Winnebago County and regional ILI rates are on a slight increase. Our county is above the regional level for percentage ILI (Winnebago is at a rate of **2.38%** while the region overall was **1.74%** for Week 12).

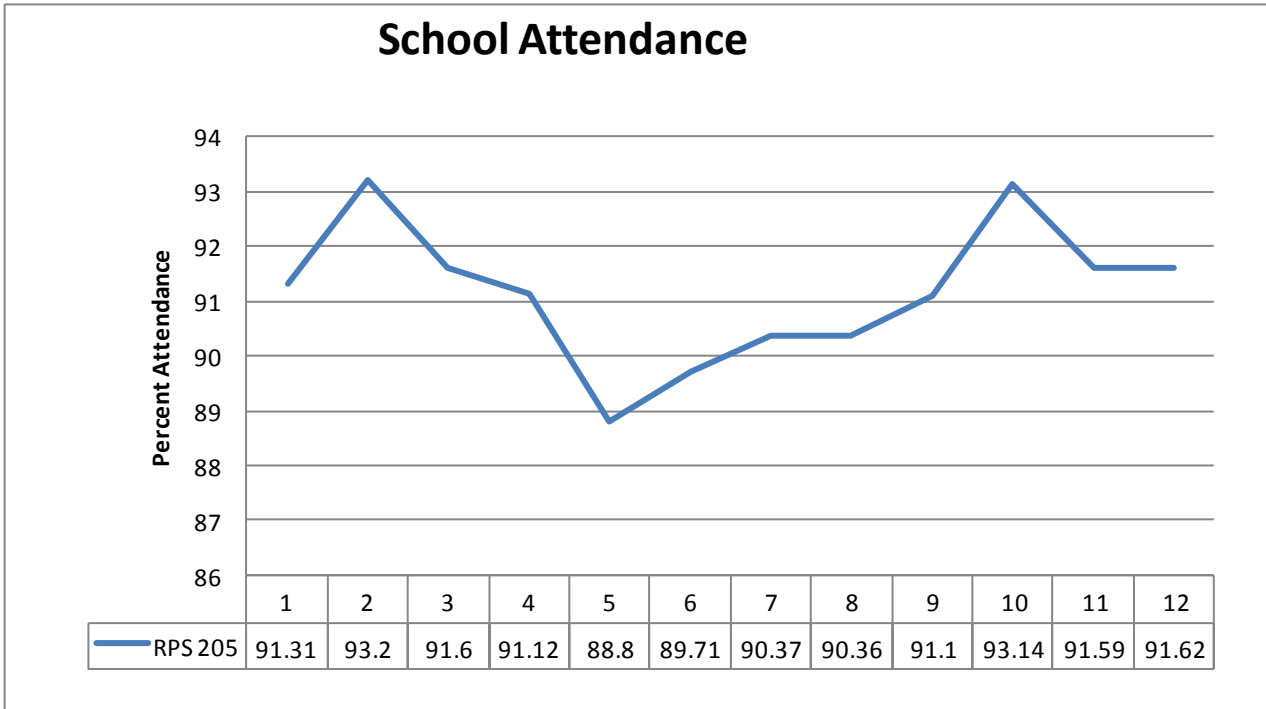
## Winnebago County ILI Activity Flu Season 2010-2011 (CDC Weeks 40-11)



**Figure 3** is the representation of all visits from our sentinel sites not participating in Essence for Influenza-Like Illness, or ILI. The average among our three sentinel sites for ILI % for Week 12 of **1.42%**. The ILI percents from our three sentinel sites are on a steady decrease. Our weekly average is above seasonal baseline of 0.84% but below the epidemic threshold of 3.71%.



**Figure 4** compares the current number of pneumonia hospital admissions (red line) against the 4-year historical average (the green line). The first 5 weeks of the year reported above the historical average and dropped slightly below the 4-year average in weeks 6. Week 7 –10 brought us back over the 4-year averages and weeks 11 and 12 came in below the historical average. For CDC week 12 a total of 23 cases reported coming in under the 4-year historical average of 28.25. Numbers for CDC week 10, 11



**Figure 5** shows school attendance to date in 2011. for the first 5 weeks of the year, school attendance was on a slight decrease for RPS District 205 but was on the rise in weeks 6-11. For CDC Week 12, current attendance rate is holding steady above 90% at

Number of confirmed H1N1 influenza cases to date in Winnebago County (2011): 3 (IDPH)

Number of confirmed Novel H3N2 influenza cases to date in Winnebago County (2011): 5 (IDPH)

Number of confirmed Novel Influenza B cases for to date in Winnebago County (2011): 11 (IDPH)

## Outside the County:

Illinois influenza activity (as of week 12):

**LOCAL**

ILI Activity Level (Influenza like Illnesses reported)

Illinois is **LOW** on the scale

United States influenza activity (as of Week 12):

**Widespread** activity in 10 States

**Regional** activity in 22 states

**Local** activity in Washington DC and 12 states

**Sporadic** activity in Guam, the U.S. Virgin Islands and 6 states



### Questions/Comments?

Amanda Mehl, MPH  
Epidemiologist  
Health Promotion and Protection  
Winnebago County  
Health Department  
401 Division Street  
Rockford, IL 61104  
815-720-4215



**Public Health**  
Prevent. Promote. Protect.