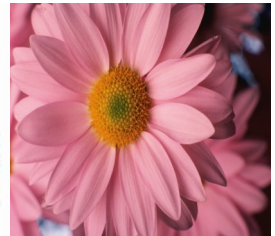




Winnebago County Health Department



Weekly Influenza Surveillance Report CDC Week 18 April 31-May 7th 2011

In Brief:

Mortality

Confirmed deaths from Pneumonia/Influenza Week 18: 1
Percent of deaths due to Pneumonia/Influenza: **7.55%**
Baseline—**1.8%**, Epidemic—**7.9%**

School Attendance

Sentinel Attendance – All Schools – Week of 05/2– 05/6: **90.57%**

Influenza-Like Illness Surveillance

Sentinel Site ILI rate (average of 3 sites participating)—week ending May 7th:
1.42%

Pneumonia Hospital Admissions

Week Ending May 7th: **31**
Previous Week Ending April 30th: **26**
Note: Numbers include 2 hospitals and are one week behind due to reporting methods.

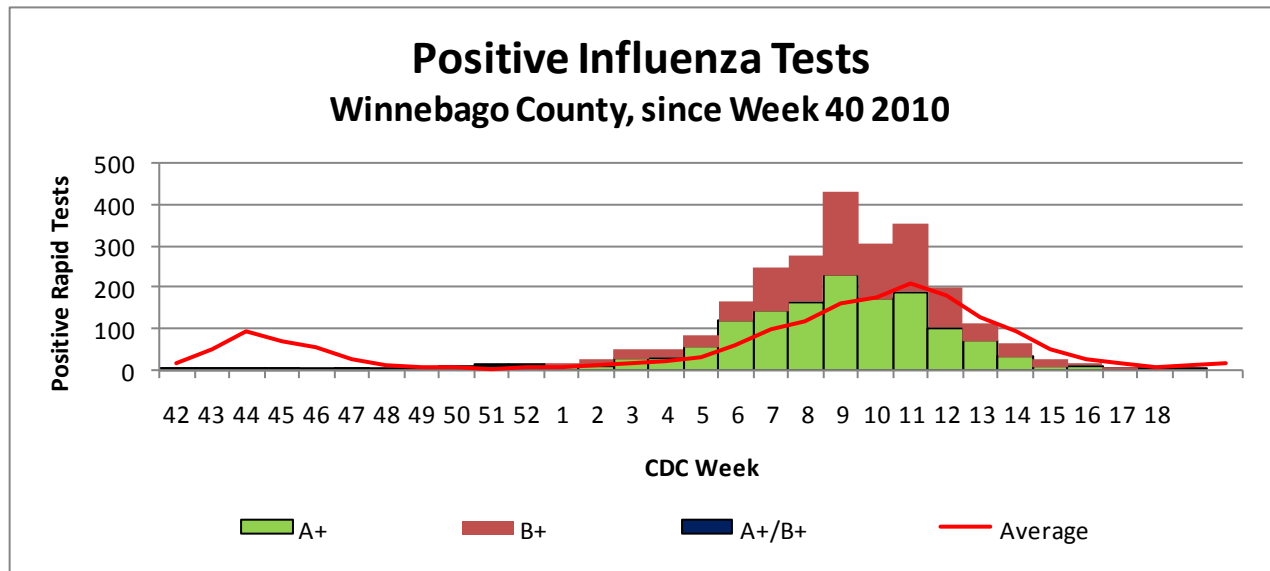


Figure 1 displays the current number of rapid flu cases reported to our department for the 2010-2011 flu season (broken down by influenza sub-typing) compared to a 4-year historical average (the red line). Ending numbers for CDC Week 18 in Winnebago County show 2476 total positive rapid flu reported for this flu season. The historical average for Week 18 is currently 15.5 while we no flu cases reported for this week.

Weekly Percentage of Visits as Identified by Essence

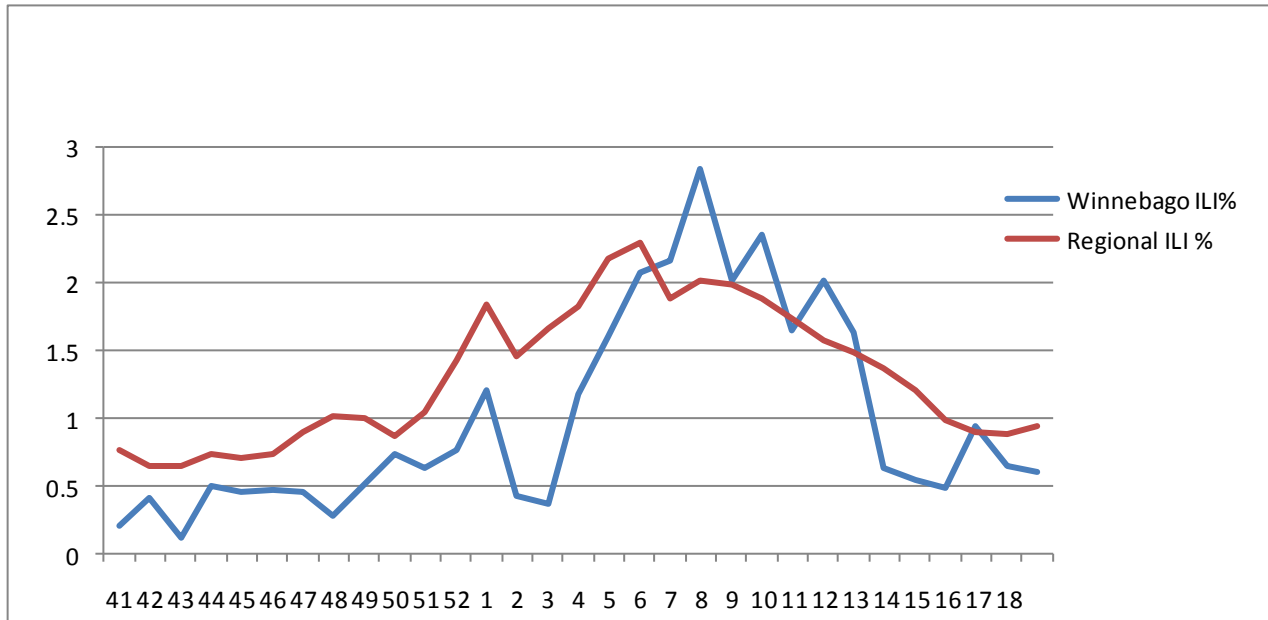


Figure 2 displays the weekly percentage of Influenza-Like Illness (ILI) as identified by the Essence Syndromic Surveillance System. The blue line shows percentage of ILI Emergency Department visits in Winnebago County from our two participating hospitals and the red line shows the regional ILI percentage for all counties participating in ESSENCE. As of CDC Week 17 Winnebago County and regional ILI rates have been steadily decreasing with a minor spike last week. For CDC Week 18, our county is below the regional level for percentage ILI (Winnebago is at a rate of 0.60% while the region overall was 0.94% for Week 18).

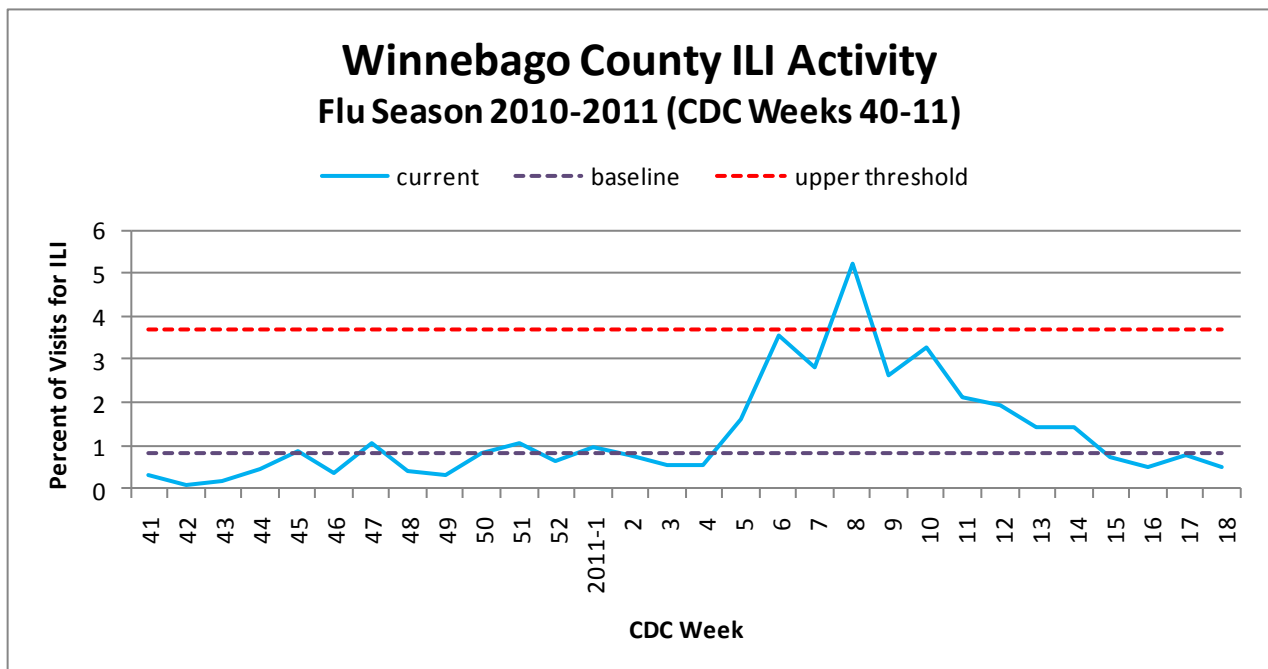


Figure 3 is the representation of all visits from our sentinel sites not participating in Essence for ILI. The average among our three sentinel sites for ILI % for Week 18 of 0.59%. The ILI percents from our three sentinel sites continues on a steady decrease with a very slight increase for week 18 only. Our weekly average has dropped below the seasonal baseline of 0.84% for the second week in a row.

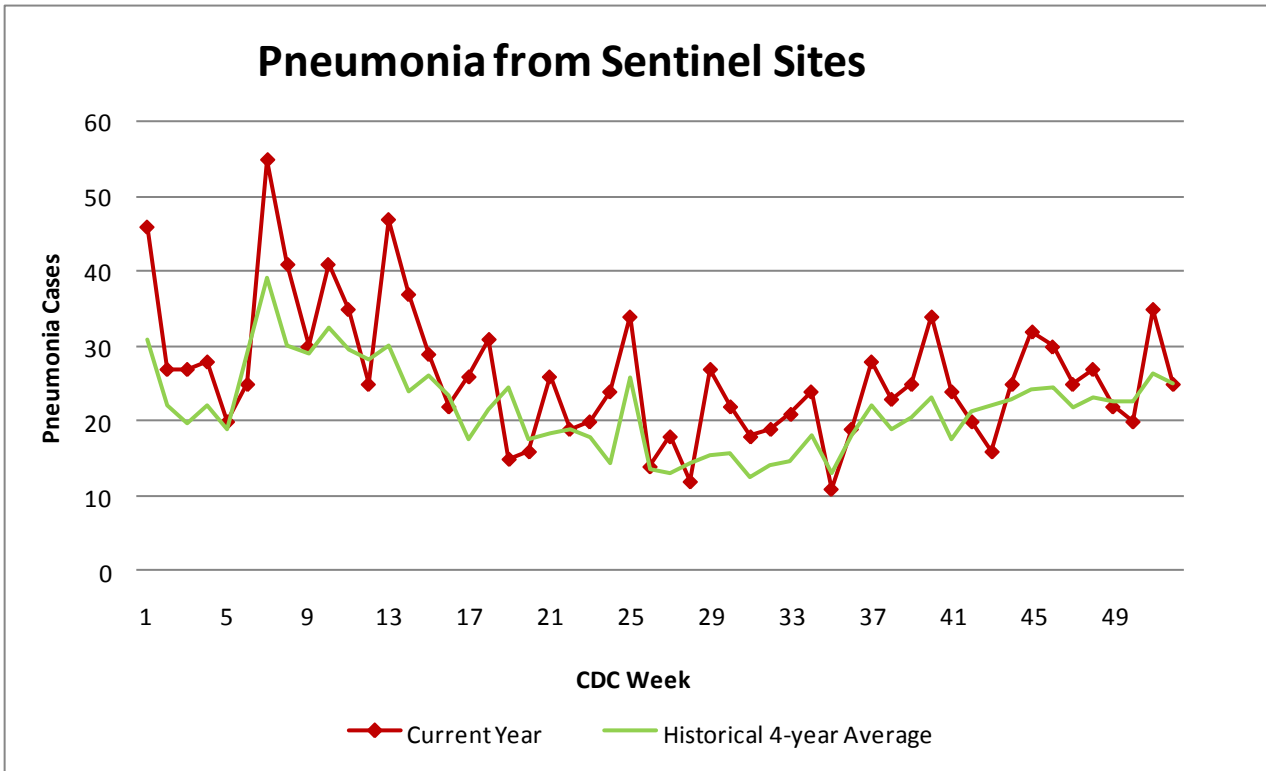


Figure 4 compares the current number of pneumonia hospital admissions (red line) against the 4-year historical average (the green line). The first 5 weeks of the year reported above the historical average and dropped slightly below the 4-year average in week 6. Weeks 7 –11 brought us back over the 4-year averages and week 12 came in below the historical average. Weeks 13, 14, and 15 were above the 4-year average and week 16 was slightly below the 4-year average. For CDC Week 17 and 18 a total of 26 and 31 cases respectively were reported coming in just above the 4-year historical averages of 17.5 and 25.5. Numbers for weeks 16, 17, and 18 for 2011 are still arriving.

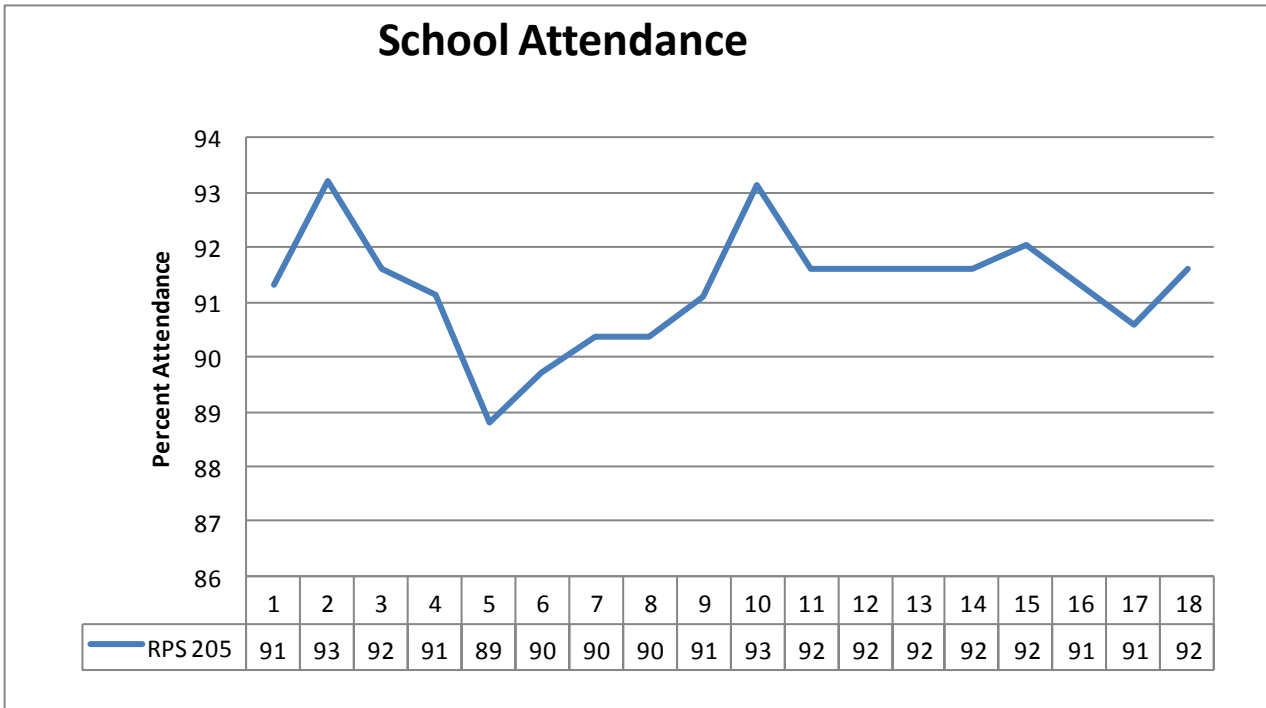


Figure 5 shows school attendance to date in 2011. For the first 5 weeks of the year, school attendance was on a slight decrease for RPS District 205 but has held steadily above 90% for weeks 6-16. For CDC Week 18, school attendance increased slightly to 91.62%

Number of confirmed H1N1 influenza cases to date in Winnebago County (2011): 3 (IDPH)

Number of confirmed Novel H3N2 influenza cases to date in Winnebago County (2011): 5 (IDPH)

Number of confirmed Novel Influenza B cases for to date in Winnebago County (2011): 11 (IDPH)

Outside the County:

Illinois influenza activity (as of Week 18):

NO Activity

ILI Activity Level (Influenza like Illnesses reported)

Illinois is **MINIMAL** on the scale

United States influenza activity (as of Week 18):

No states reported widespread influenza activity

Regional influenza activity was reported in New Hampshire

Local Influenza activity was reported in Maine and Vermont

Sporadic activity Sporadic influenza activity was reported in Washington DC, Puerto Rico and 33 states

The U.S. Virgin Islands, Guam, and 14 states reported no influenza activity



Questions/Comments?

Amanda Mehl, MPH
Epidemiologist
Health Promotion and Protection
Winnebago County
Health Department
401 Division Street
Rockford, IL 61104
815-720-4215



Public Health
Prevent. Promote. Protect.