



Winnebago County Health Department



Weekly Influenza Surveillance Report CDC Week 24 June 12th-June 18th 2011

In Brief:

Mortality

Confirmed deaths from Pneumonia/Influenza Week 24: 1
Percent of deaths due to Pneumonia/Influenza: **3.28%**
Baseline—**1.8%**, Epidemic—**7.9%**

Influenza-Like Illness Surveillance

Sentinel Site ILI rate (average of 3 sites participating)—week ending June 11th:
0.33%

Pneumonia Hospital Admissions

Week Ending June 18th: **14**

Previous Week Ending June 11th: **20**

Note: Numbers include 2 hospitals and are one week behind due to reporting methods.

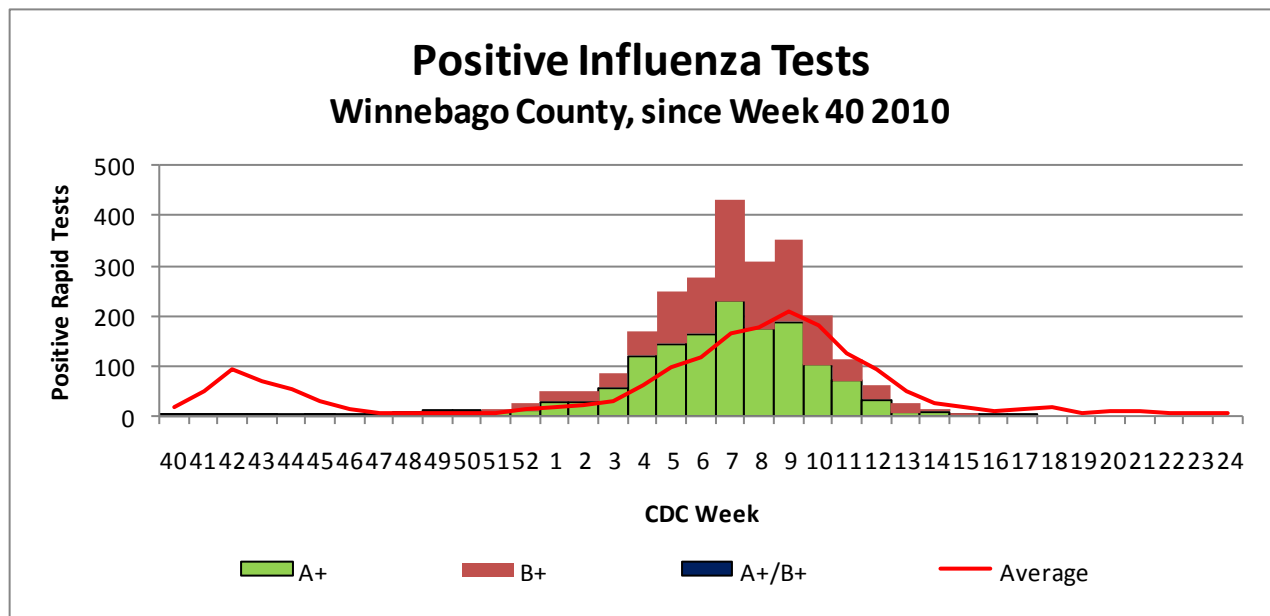


Figure 1 displays the current number of rapid flu cases reported to our department for the 2010-2011 flu season (broken down by influenza sub-typing) compared to a 4-year historical average (the red line). Ending numbers for CDC Week 24 in Winnebago County continue at 2476 total positive rapid flu reported for this flu season with no new cases reported this week. The historical average for Week 24 is currently 3.67 while once again we had no flu cases reported.

Weekly Percentage of Visits as Identified by Essence

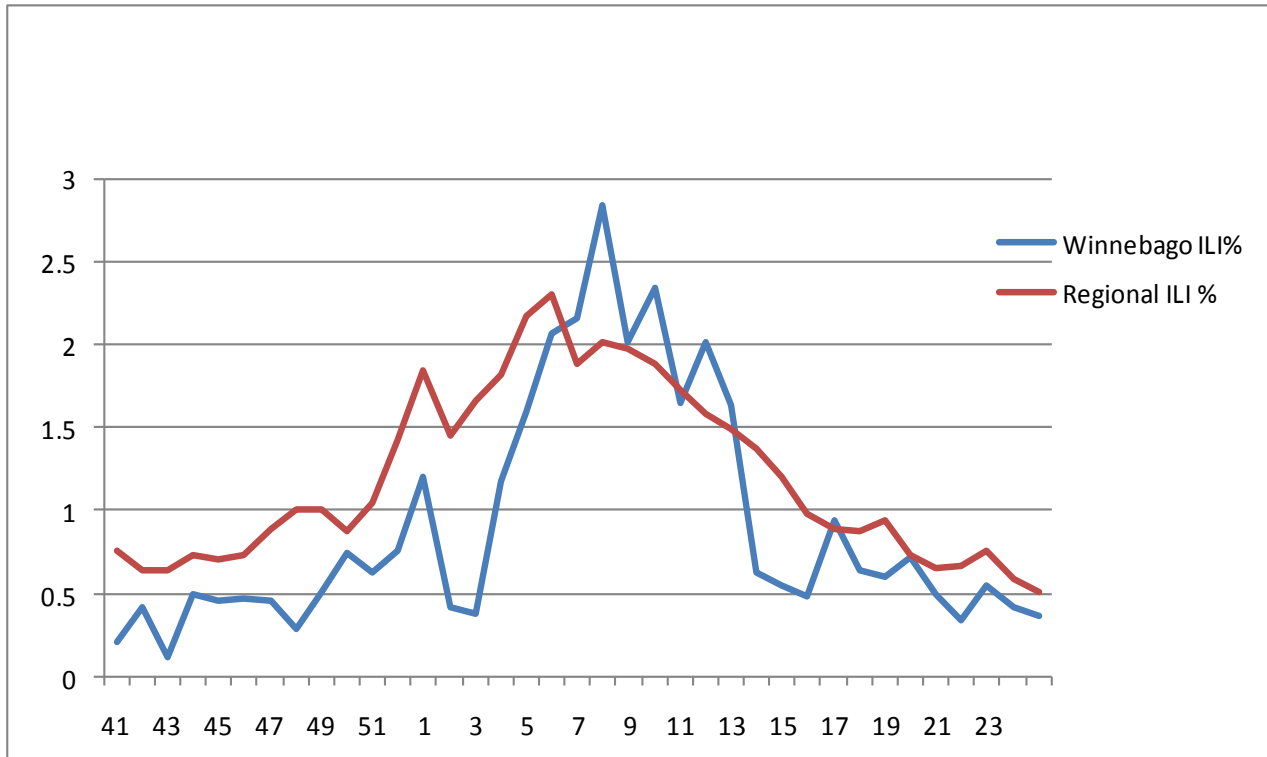


Figure 2 displays the weekly percentage of Influenza-Like Illness (ILI) as identified by the Essence Syndromic Surveillance System. The blue line shows percentage of ILI Emergency Department visits in Winnebago County from our two participating hospitals and the red line shows the regional ILI percentage for all counties participating in ESSENCE. For CDC Week 24, our county is at a rate of **0.36% which is below the regional ILI percent 0.51% for Week 24.**

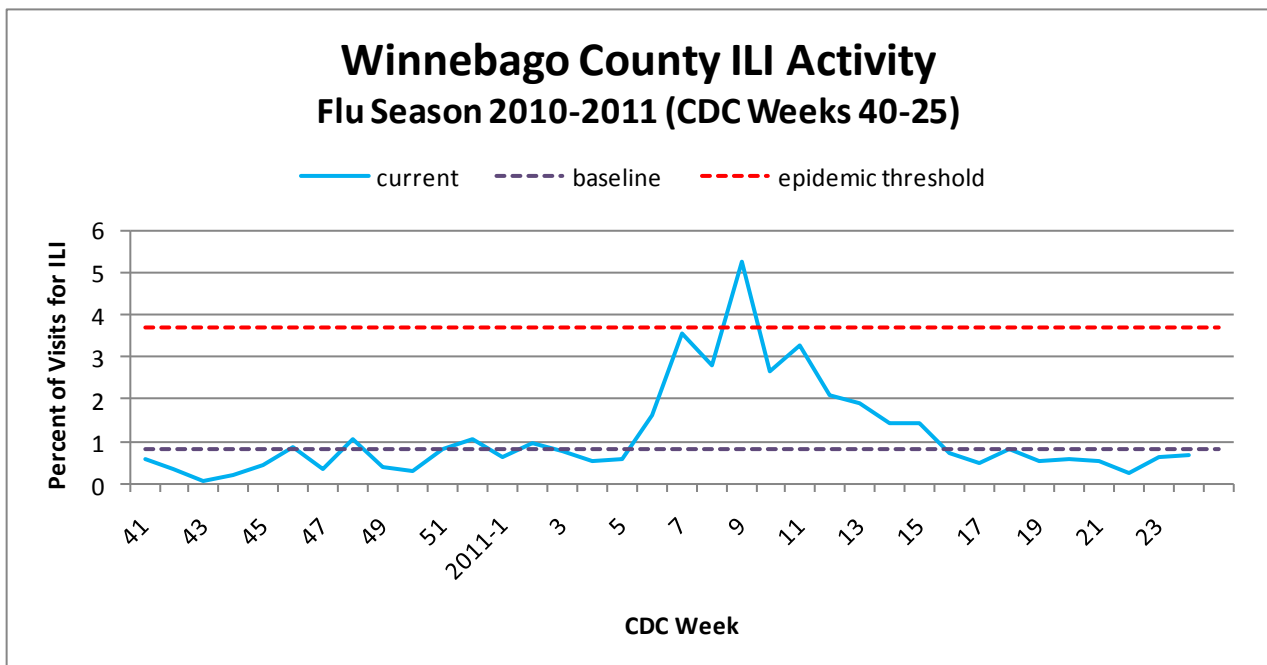


Figure 3 is the representation of all visits from our sentinel sites not participating in Essence for ILI. The average among our two sentinel sites for ILI % for Week 24 of **0.52%**. The ILI percents from our three sentinel sites continues on a steady decrease. Our weekly average has dropped below the seasonal baseline of 0.84% for the eighth week in a row.

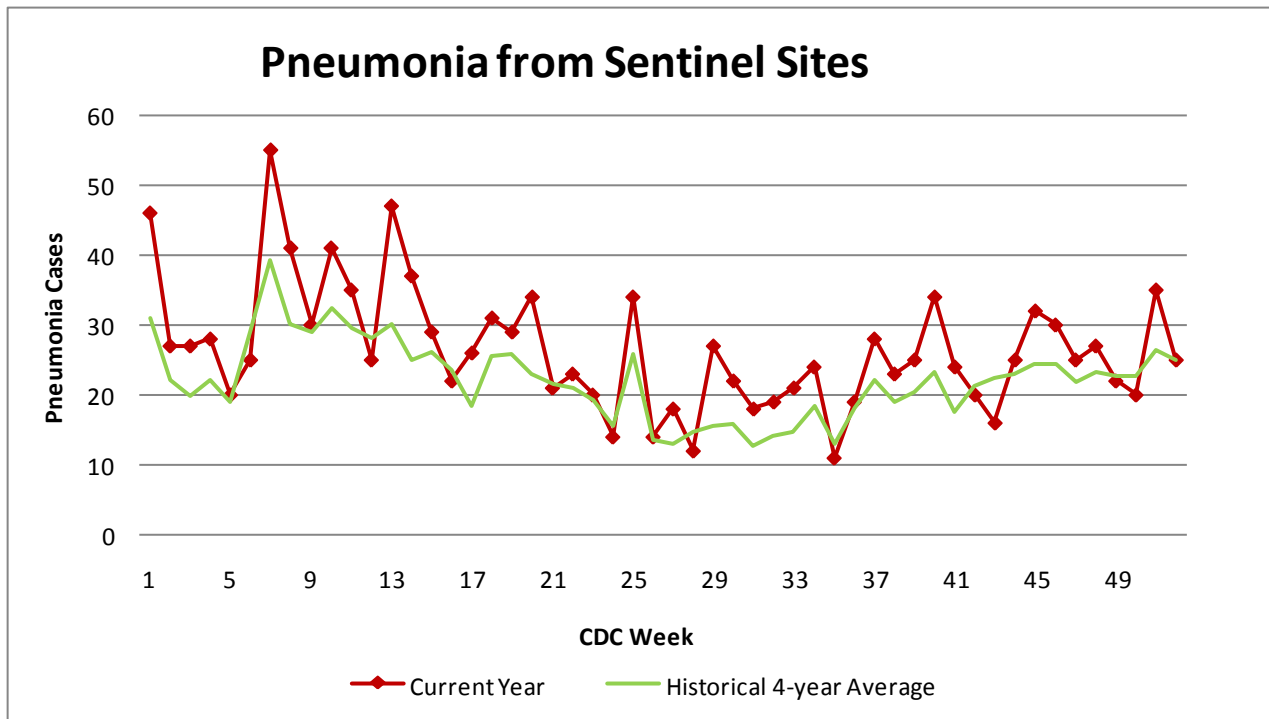


Figure 4 compares the current number of pneumonia hospital admissions (red line) against the 4-year historical average (the green line). For CDC Week 24, we were just below the 4-year historical average of 15.5 with 14 hospital admittances reported (Note that we are missing numbers from one of our hospitals). Numbers for weeks 22, 23, and 24 for 2011 are still arriving.

Number of confirmed H1N1 influenza cases to date in Winnebago County (2011): 3 (IDPH)

Number of confirmed Novel H3N2 influenza cases to date in Winnebago County (2011): 5 (IDPH)

Number of confirmed Novel Influenza B cases for to date in Winnebago County (2011): 11 (IDPH)

Outside the County:

(No new data on Influenza Activity and ILI by state was reported for CDC Week #22)

Illinois influenza activity (as of Week 20):

NO Activity

ILI Activity Level (Influenza like Illnesses reported)

Illinois is **MINIMAL** on the scale



Questions/Comments?

Amanda Mehl, MPH
Epidemiologist
Health Promotion and Protection
Winnebago County
Health Department
401 Division Street
Rockford, IL 61104
815-720-4215



Public Health
Prevent. Promote. Protect.