



# Winnebago County Health Department



## Weekly Influenza Surveillance Report CDC Week 25 June 19th-June 25th 2011

### In Brief:

#### **Mortality**

Confirmed deaths from Pneumonia/Influenza Week 25: 1  
Percent of deaths due to Pneumonia/Influenza: **1.79%**  
Baseline—**1.8%**, Epidemic—**7.9%**

#### **Influenza-Like Illness Surveillance**

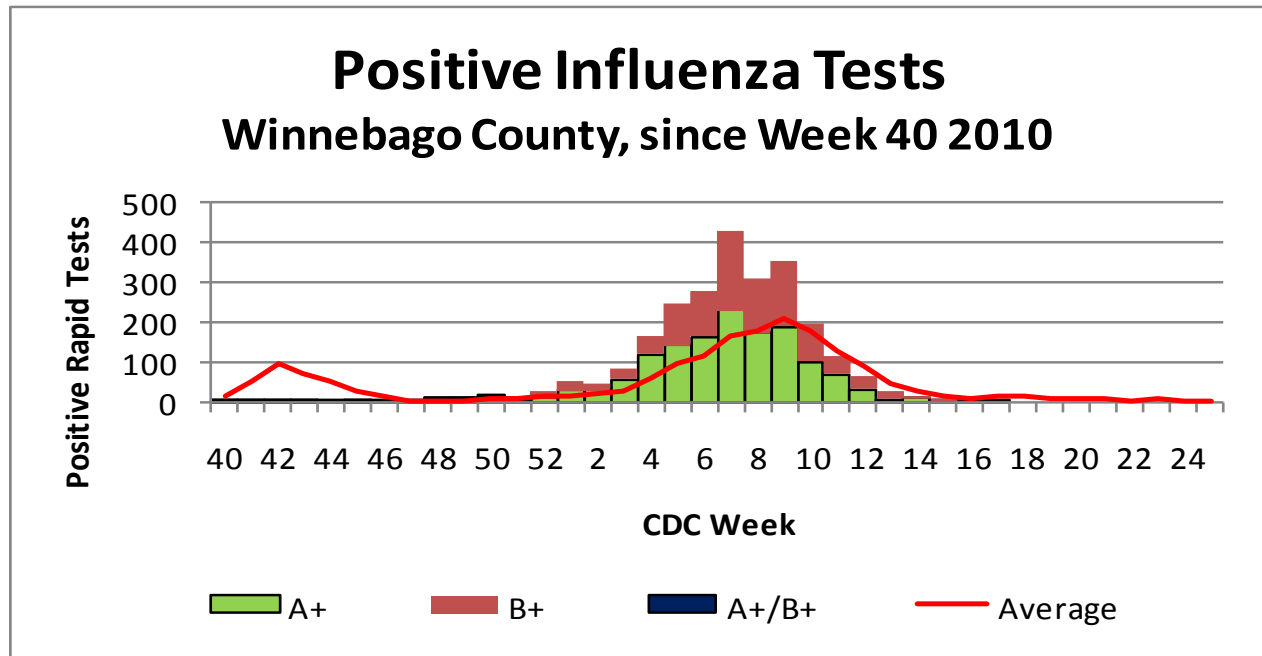
Sentinel Site ILI rate (average of 3 sites participating)—week ending June 25th:  
**0.18% (only 2 sites reported this week)**

#### **Pneumonia Hospital Admissions**

Week Ending June 25th: **7**

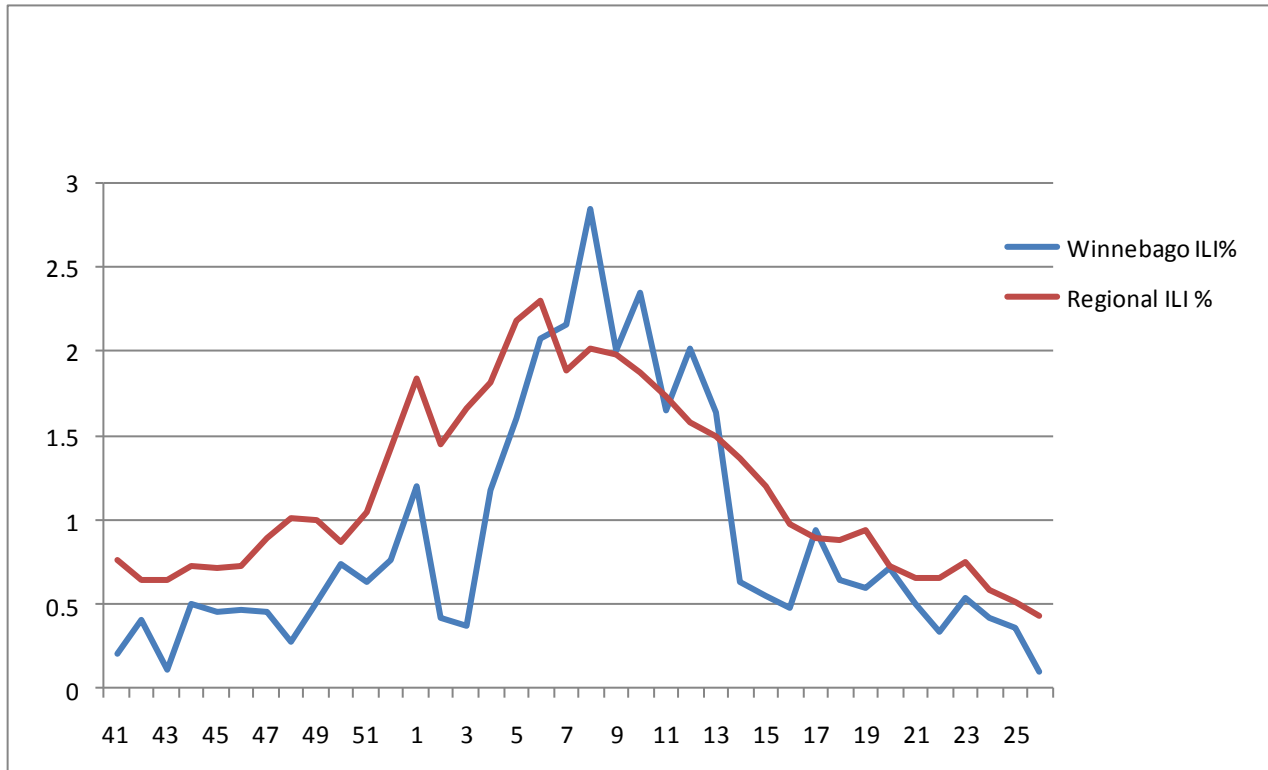
Previous Week Ending June 18th: **15**

Note: Numbers include 2 hospitals and are one week behind due to reporting methods.

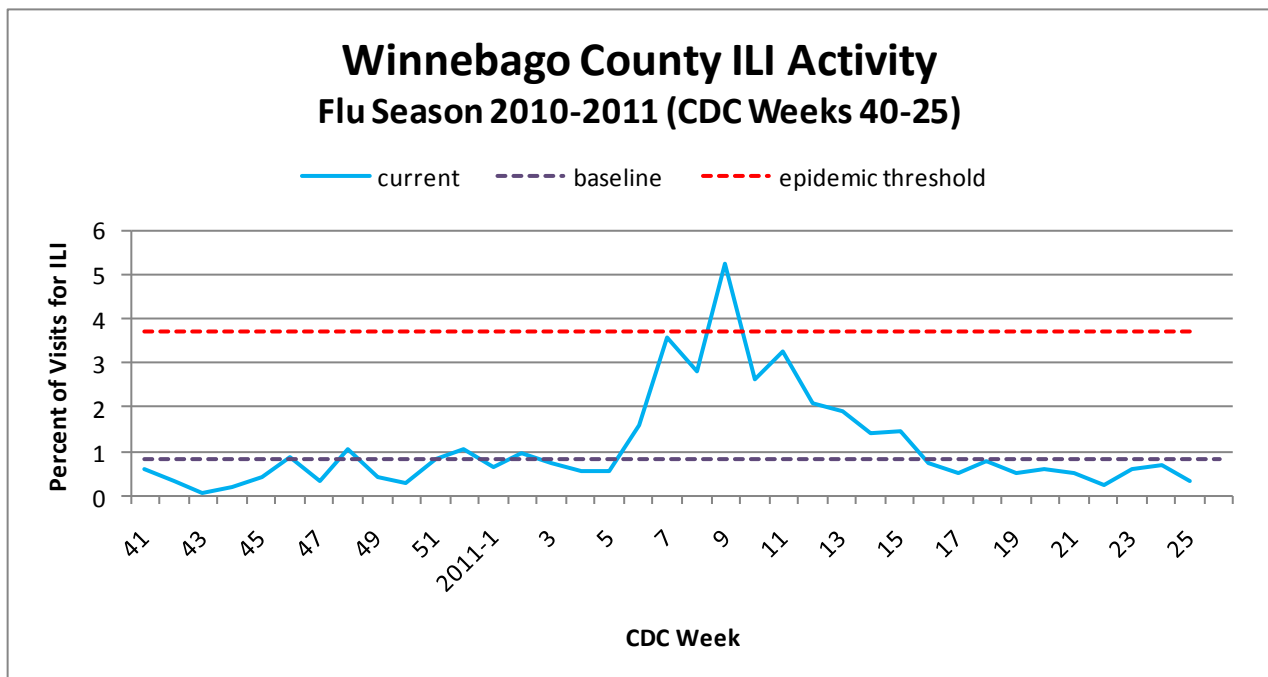


**Figure 1** displays the current number of rapid flu cases reported to our department for the 2010-2011 flu season (broken down by influenza sub-typing) compared to a 4-year historical average (the red line). Ending numbers for CDC Week 25 in Winnebago County continue at 2476 total positive rapid flu reported for this flu season with no new cases reported this week. The historical average for Week 25 is currently 1.5 while once again we had no flu cases reported.

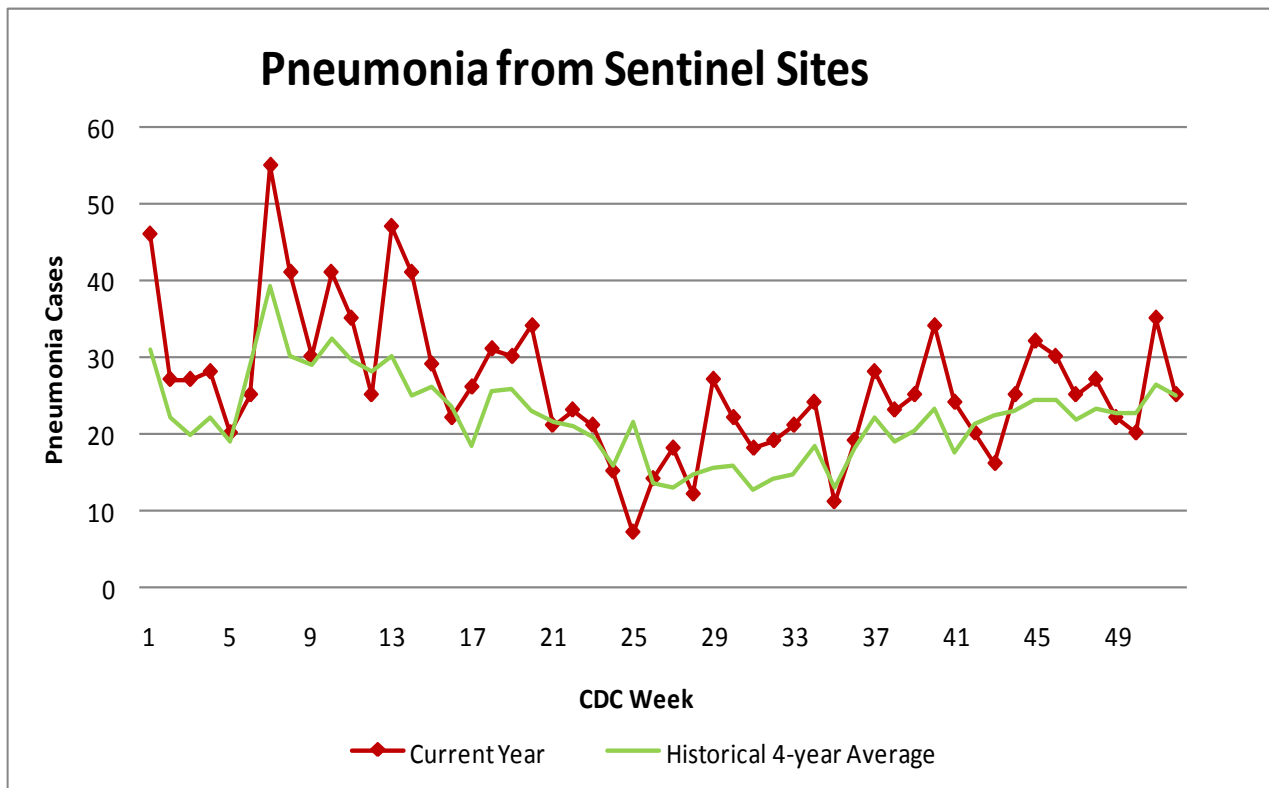
## Weekly Percentage of Visits as Identified by Essence



**Figure 2** displays the weekly percentage of Influenza-Like Illness (ILI) as identified by the Essence Syndromic Surveillance System. The blue line shows percentage of ILI Emergency Department visits in Winnebago County from our two participating hospitals and the red line shows the regional ILI percentage for all counties participating in ESSENCE. For CDC Week 25, our county is at a rate of **0.10% which is below the regional ILI percent 0.43% for Week 25.**



**Figure 3** is the representation of all visits from our sentinel sites not participating in Essence for ILI. The average among our two sentinel sites (one site did not report this week) for ILI % for Week 25 of **0.18%**. The ILI percents from our three sentinel sites continues on a steady decrease. Our weekly average has dropped below the seasonal baseline of 0.84% for the ninth week in a row.



**Figure 4** compares the current number of pneumonia hospital admissions (red line) against the 4-year historical average (the green line). For CDC Week 25, we were way below the 4-year historical average of 21.5 with only 7 hospital admittances reported. Numbers for weeks 23, 24, and 25 for 2011 are still arriving.

Number of confirmed H1N1 influenza cases to date in Winnebago County (2011): 3 (IDPH)

Number of confirmed Novel H3N2 influenza cases to date in Winnebago County (2011): 5 (IDPH)

Number of confirmed Novel Influenza B cases for to date in Winnebago County (2011): 11 (IDPH)

**Outside the County:**

**(No new data on Influenza Activity and ILI by state was reported for CDC Week #22)**

Illinois influenza activity (as of Week 20):  
**NO Activity**

ILI Activity Level (Influenza like Illnesses reported)  
Illinois is **MINIMAL** on the scale



**Questions/Comments?**

Amanda Mehl, MPH  
Epidemiologist  
Health Promotion and Protection  
Winnebago County  
Health Department  
401 Division Street  
Rockford, IL 61104  
815-720-4215



**Public Health**  
Prevent. Promote. Protect.