



# Winnebago County Health Department



## Weekly Influenza Surveillance Report CDC Week 26 June 26th-July 2nd 2011

### In Brief:

#### **Mortality**

Confirmed deaths from Pneumonia/Influenza Week 26: 7  
Percent of deaths due to Pneumonia/Influenza: **11.11%**

#### **Influenza-Like Illness Surveillance**

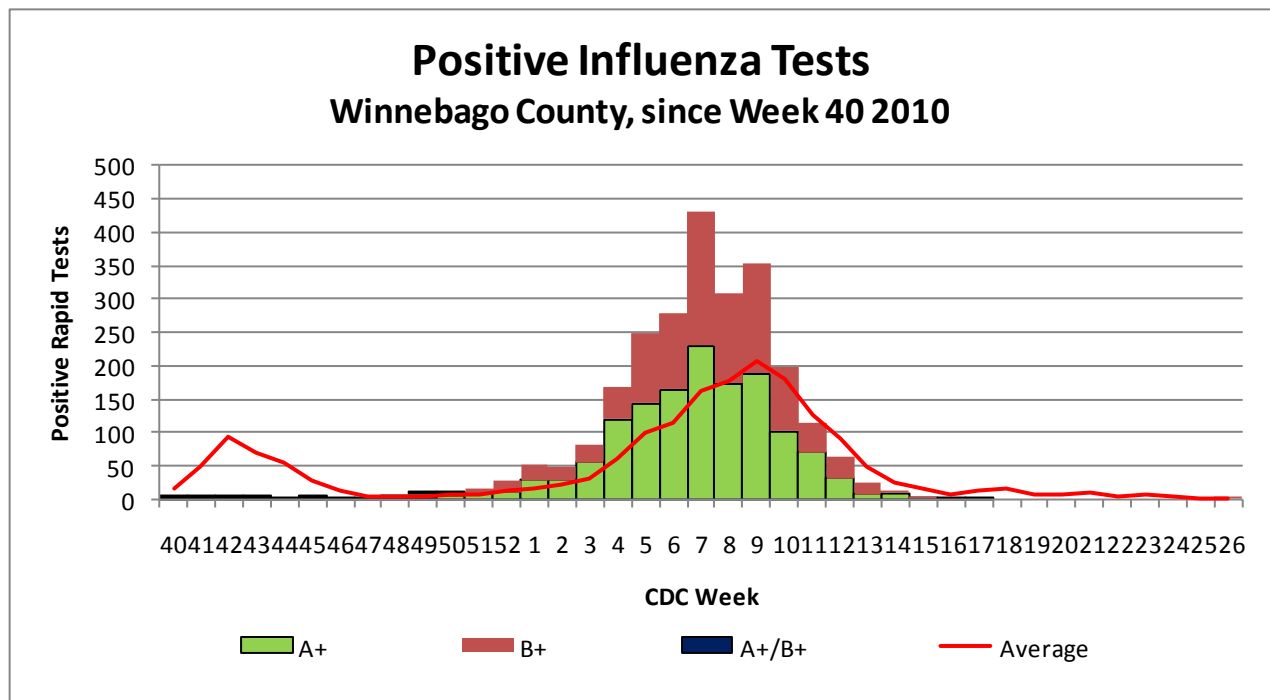
Sentinel Site ILI rate (average of 3 sites participating)—week ending July 2nd:  
**0.126%**

#### **Pneumonia Hospital Admissions**

Week Ending July 2nd: **21**

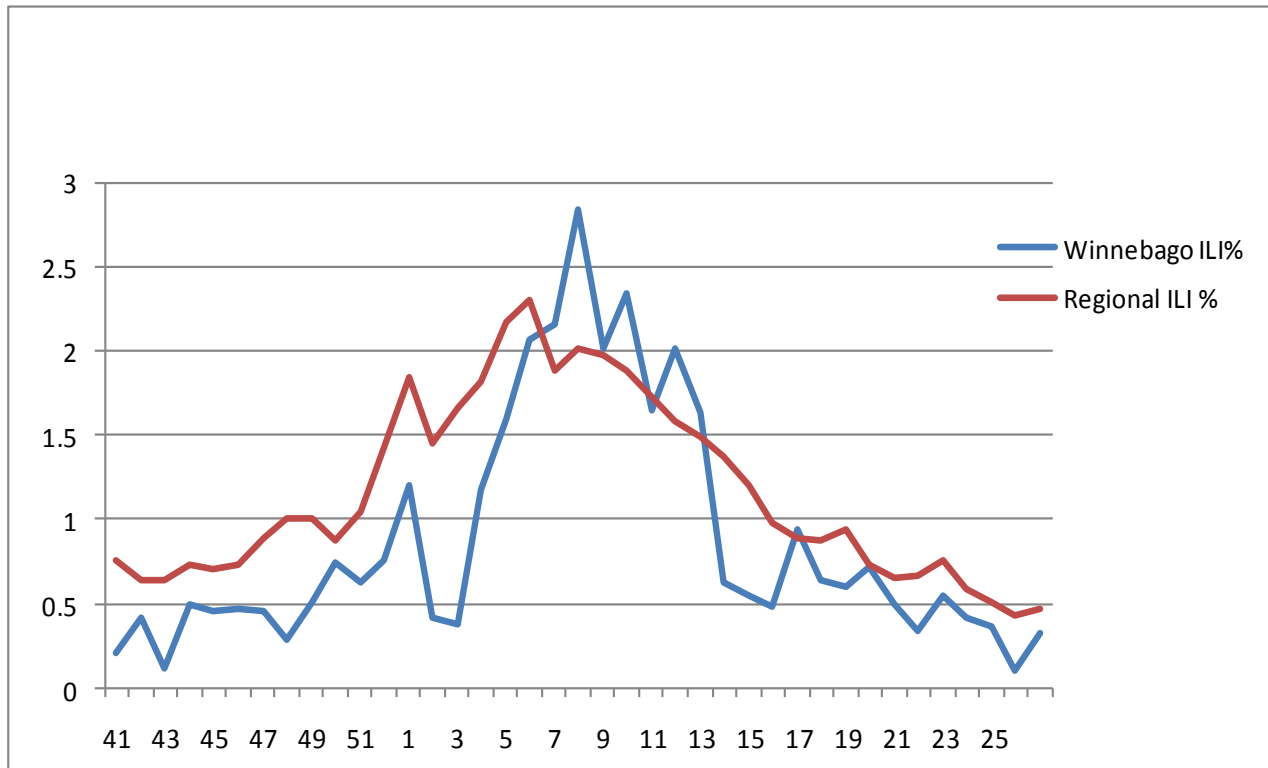
Previous Week Ending June 25th: **9**

Note: Numbers include 2 hospitals and are one week behind due to reporting methods.

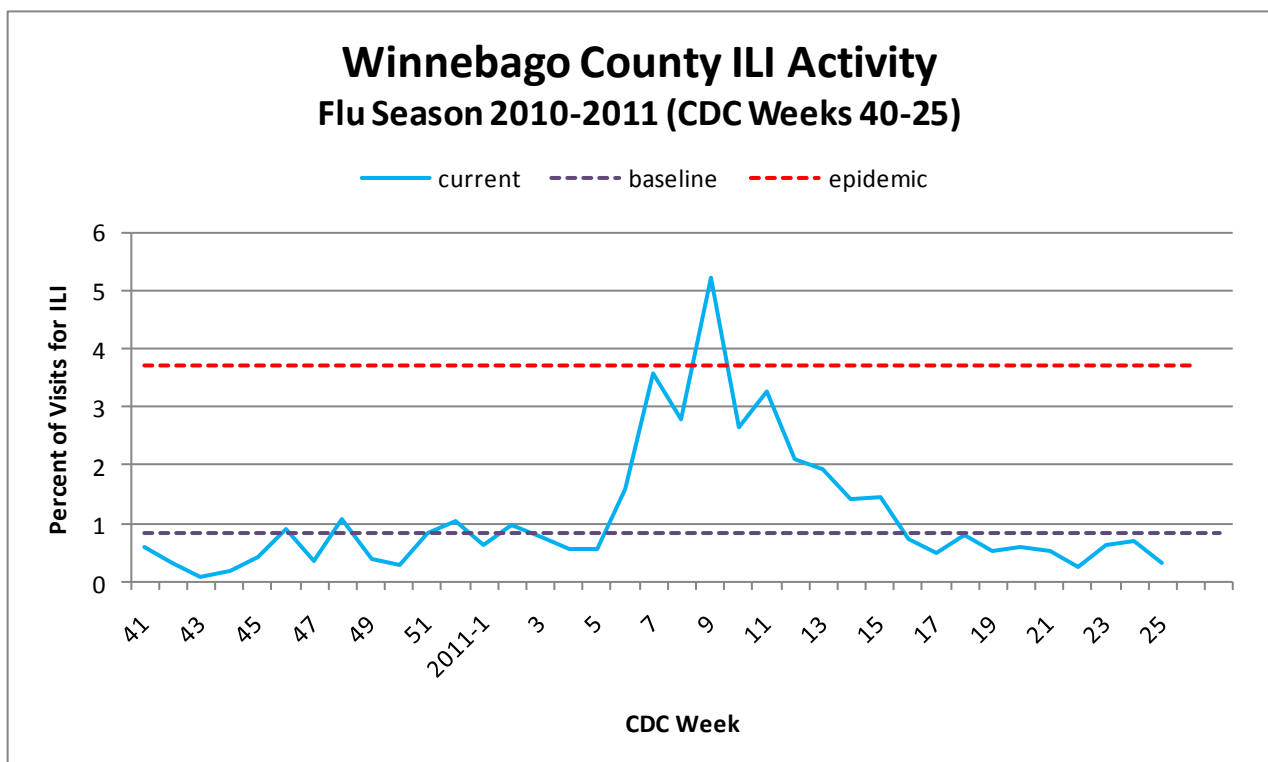


**Figure 1** displays the current number of rapid flu cases reported to our department for the 2010-2011 flu season (broken down by influenza sub-typing) compared to a 4-year historical average (the red line). Ending numbers for CDC Week 26 in Winnebago County continue at 2477 total positive rapid flu reported for this flu season. One case of Influenza was reported for Week #26. The historical average for Week 26 is currently 1.75.

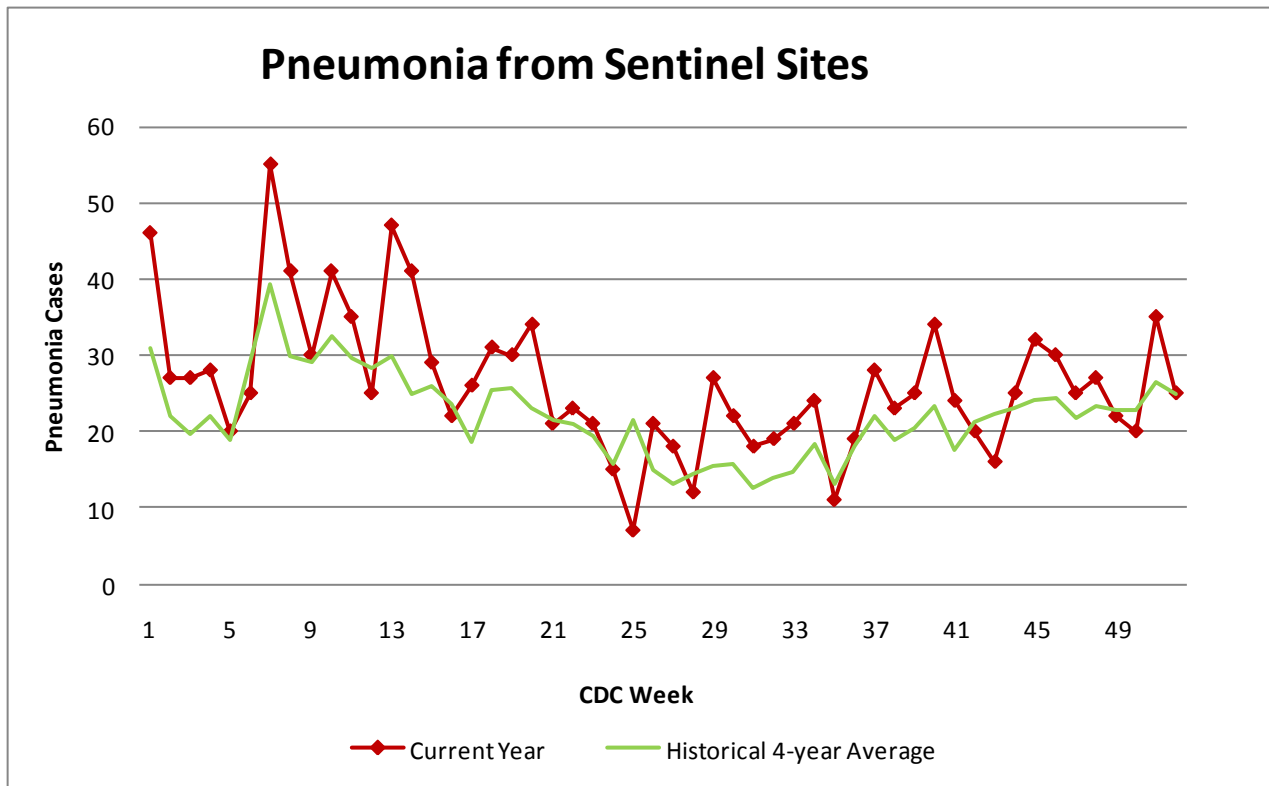
## Weekly Percentage of Visits as Identified by Essence



**Figure 2** displays the weekly percentage of Influenza-Like Illness (ILI) as identified by the Essence Syndromic Surveillance System. The blue line shows percentage of ILI Emergency Department visits in Winnebago County from our two participating hospitals and the red line shows the regional ILI percentage for all counties participating in ESSENCE. For CDC Week 26, our county is at a rate of **0.32% which is below the regional ILI percent 0.47%** for Week 26.



**Figure 3** is the representation of all visits from our sentinel sites not participating in Essence for ILI. The average among our three sentinel sites for ILI % for Week 26 is **0.26%**.



**Figure 4** compares the current number of pneumonia hospital admissions (red line) against the 4-year historical average (the green line). For CDC Week 26, we were above the 4-year historical average of 15 with 21 hospital admittances reported. Numbers for weeks 24, 25, and 26 for 2011 are still arriving.

Number of confirmed H1N1 influenza cases to date in Winnebago County (2011): 3 (IDPH)

Number of confirmed Novel H3N2 influenza cases to date in Winnebago County (2011): 5 (IDPH)

Number of confirmed Novel Influenza B cases for to date in Winnebago County (2011): 11 (IDPH)

### Outside the County:

**(No new data on Influenza Activity and ILI by state was reported for CDC Week #22)**

Illinois influenza activity (as of Week 20):

**NO Activity**

ILI Activity Level (Influenza like Illnesses reported)

Illinois is **MINIMAL** on the scale



**Questions/Comments?**

Amanda Mehl, MPH  
Epidemiologist  
Health Promotion and Protection  
Winnebago County  
Health Department  
401 Division Street  
Rockford, IL 61104  
815-720-4215



**Public Health**  
Prevent. Promote. Protect.