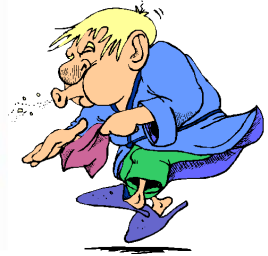




# Winnebago County Health Department



## Weekly Influenza Surveillance Report CDC Week 43 October 23rd-October 29th, 2011

### **In Brief:**

#### **Mortality**

Confirmed deaths from Pneumonia/Influenza Week 43: **2**

Percent of deaths due to Pneumonia/Influenza Week 43: **3.92%**

#### **Influenza-Like Illness Surveillance**

Sentinel Site ILI rate -Week 43 ending October 29th: **0.93%**

#### **Pneumonia Hospital Admissions**

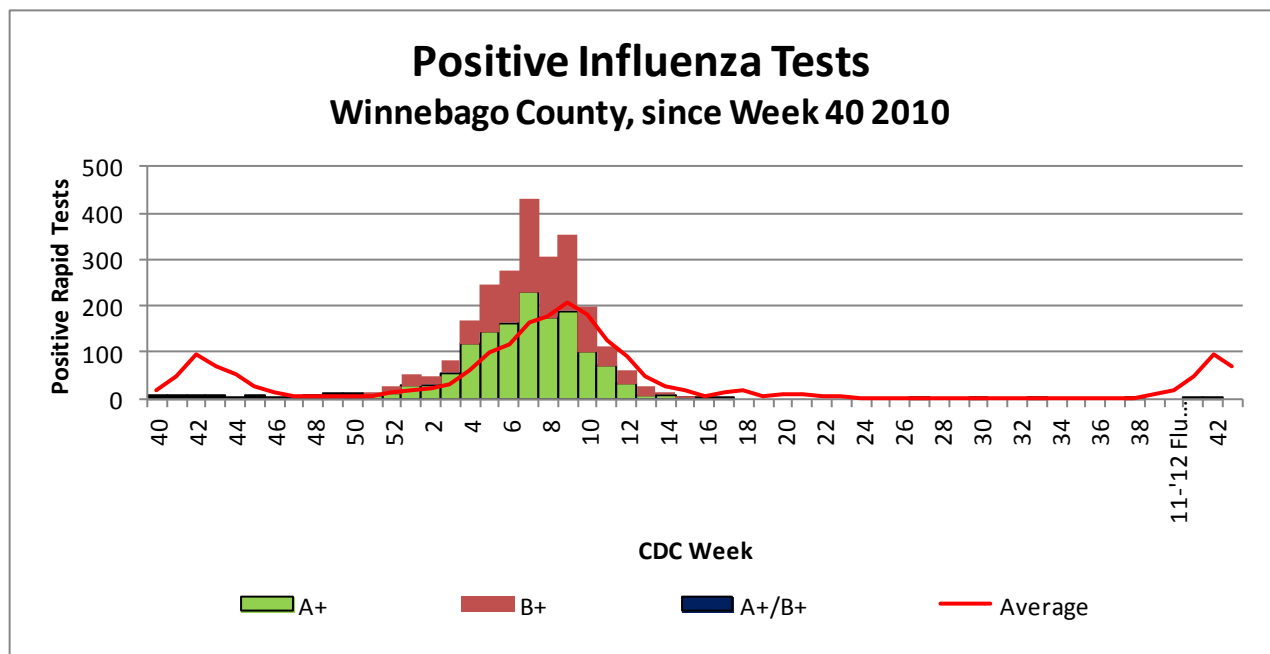
Week 43 Ending October 29th: **16**

Previous Week 42 Ending October 22nd: **17**

Note: One hospital did not report yet this week.

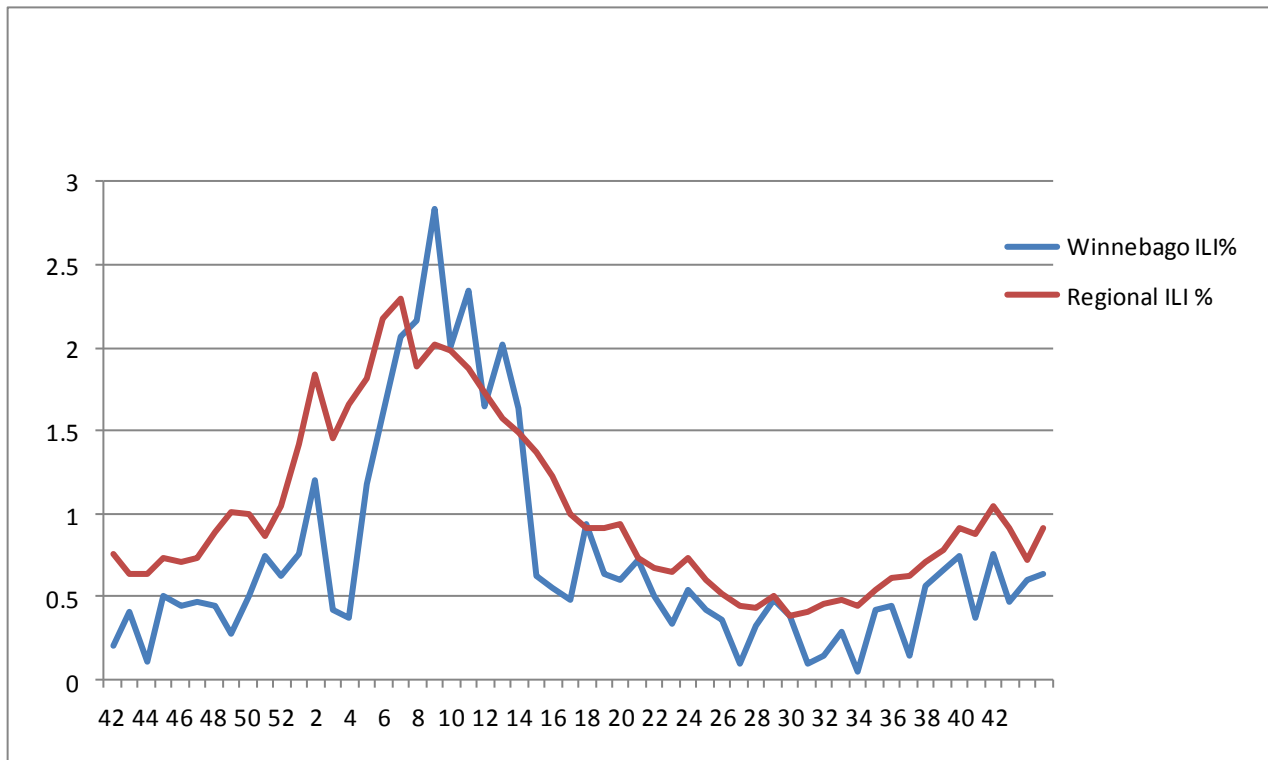
#### **School Attendance**

Week 43 Ending October 29th: **94.37%**

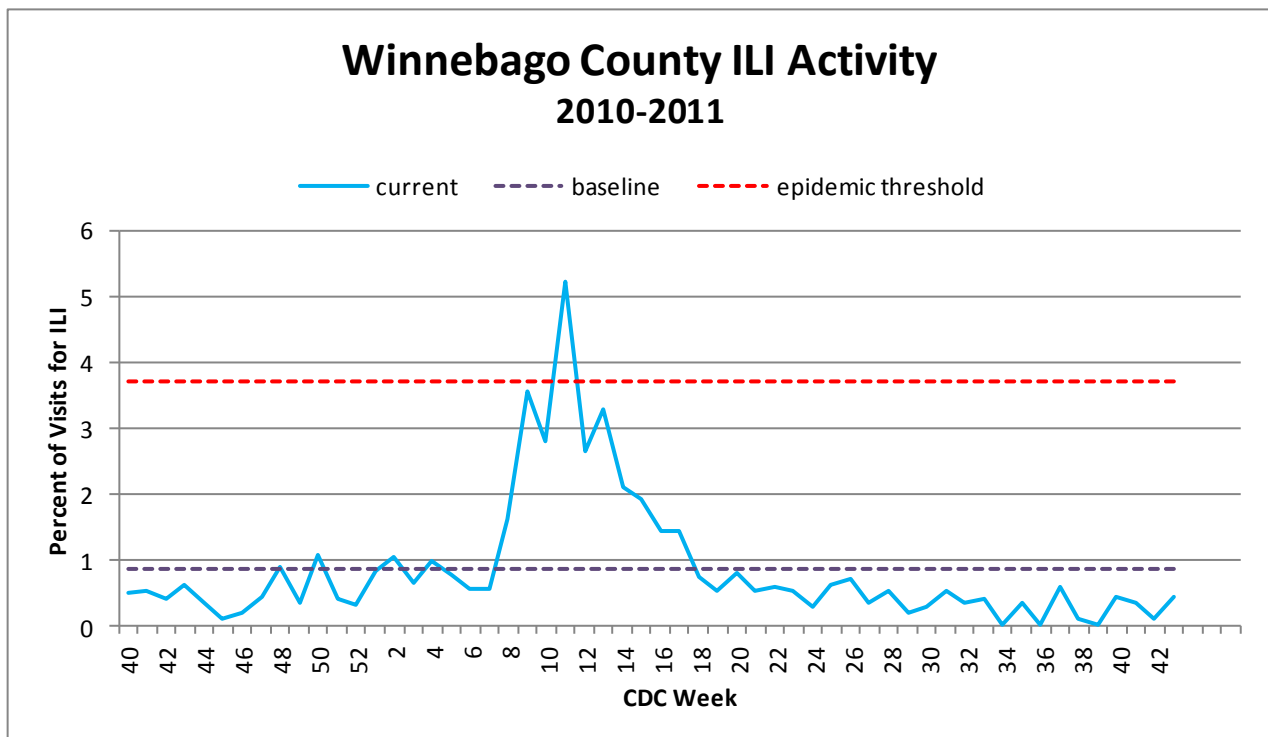


**Figure 1** displays the current number of rapid flu cases reported to our department and broken down by influenza sub-typing compared to a 4-year historical average (the red line). 5 total A positive rapid flu cases have been reported for this 2011-12 flu season. No cases have been reported for Week 43 which is well below the historical average of 69 cases.

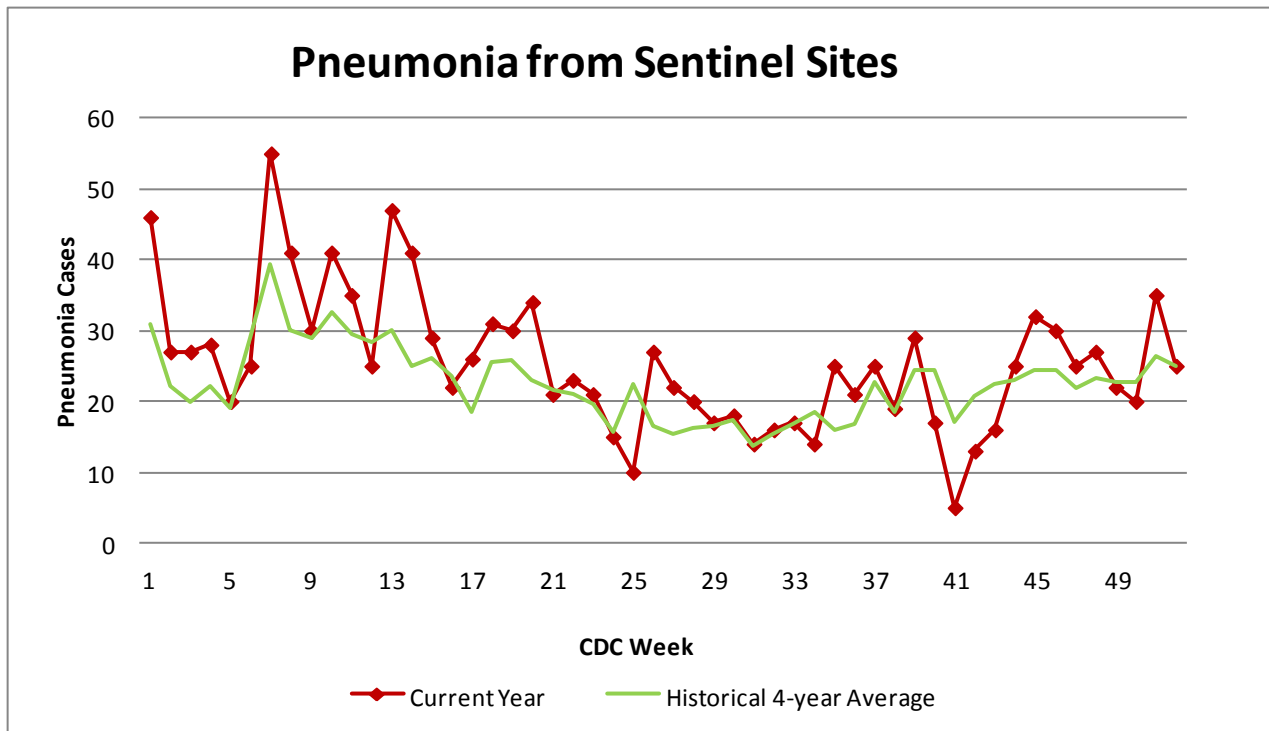
## Weekly Percentage of Visits as Identified by Essence



**Figure 2** displays the weekly percentage of Influenza-Like Illness (ILI) as identified by the Essence Syndromic Surveillance System. The blue line shows percentage of ILI Emergency Department visits in Winnebago County from our two participating hospitals and the red line shows the regional ILI percentage for all counties participating in ESSENCE. For CDC Week 43, Winnebago county reported an ILI percent of **0.64**, slightly below the regional ILI percent of **0.92**.



**Figure 3** is the representation of all visits from our sentinel sites not participating in Essence for ILI. ILI activity was very low at 0.93% among the three sites for CDC Week 43.



**Figure 4** compares the current number of pneumonia hospital admissions (red line) against the 4-year historical average (the green line). For CDC Week 43, we are below the 4-year historical average of 22.5 with only 16 total hospital admittances reported. Note that all data are preliminary and numbers for weeks 41, 42, and 43 for 2011 are still arriving. Note: one participating hospital has not yet reported for week 43.

### Outside the County:

Illinois influenza activity (as of Week 43):

#### **Illinois reported NO INFLUENZA ACTIVITY**

- Sporadic influenza activity was reported by the District of Columbia, Puerto Rico, and 19 states (Alaska, California, Colorado, Connecticut, Florida, Hawaii, Idaho, Indiana, Louisiana, Maine, Massachusetts, Minnesota, New Mexico, New York, Ohio, Pennsylvania, Texas, Virginia, and Wisconsin).
- No influenza activity was reported by Guam, the U.S. Virgin Islands, and 31 states (Alabama, Arizona, Arkansas, Delaware, Georgia, Illinois, Iowa, Kansas, Kentucky, Maryland, Michigan, Mississippi, Missouri, Montana, Nebraska, Nevada, New Hampshire, New Jersey, North Carolina, North Dakota, Oklahoma, Oregon, Rhode Island, South Carolina, South Dakota, Tennessee, Utah, Vermont, Washington, West Virginia, and Wyoming).



#### **Questions/Comments?**

Amanda Mehl, MPH  
Epidemiologist  
Health Promotion and Protection  
Winnebago County  
Health Department  
401 Division Street  
Rockford, IL 61104  
815-720-4215



**Public Health**  
Prevent. Promote. Protect.

ILI Activity Level (Influenza like Illnesses reported Week 43)

Illinois is **MINIMAL** on the scale