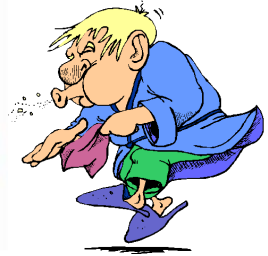




# Winnebago County Health Department



## Weekly Influenza Surveillance Report CDC Week 44 October 30th-November 5th, 2011

### In Brief:

#### **Mortality**

Confirmed deaths from Pneumonia/Influenza Week 44: **3**

Percent of deaths due to Pneumonia/Influenza Week 44: **4.62%**

#### **Influenza-Like Illness Surveillance**

Sentinel Site ILI rate -Week 44 ending November 5th: **0.54%**

#### **Pneumonia Hospital Admissions**

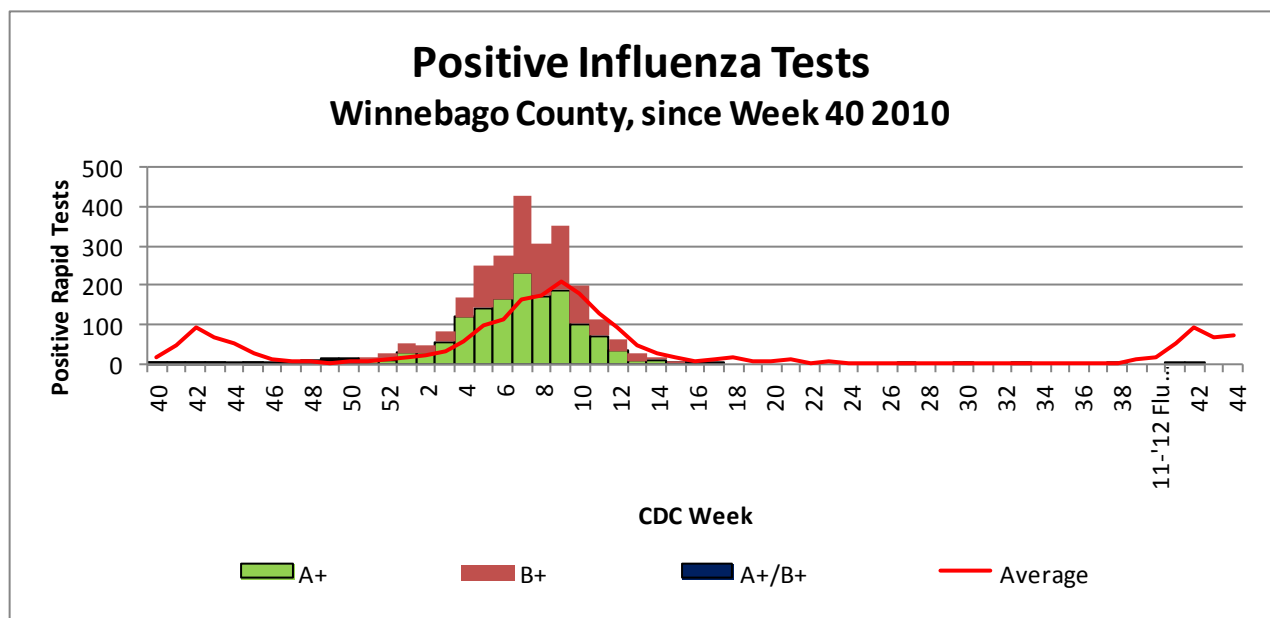
Week 44 Ending November 5th: **18**

Previous Week 43 Ending October 29th: **19**

Note: Numbers include 2 hospitals and are one week behind due to reporting methods.

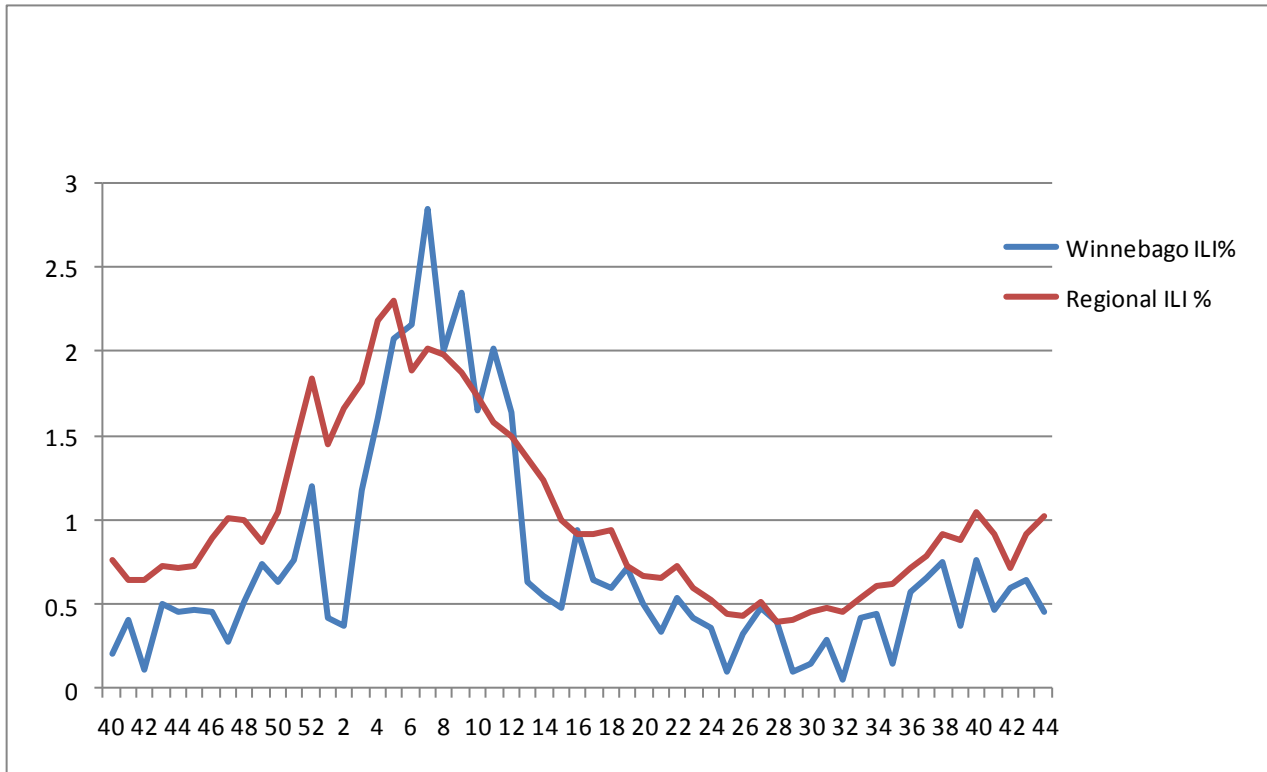
#### **School Attendance**

Week 44 Ending November 5th: **94.37%**

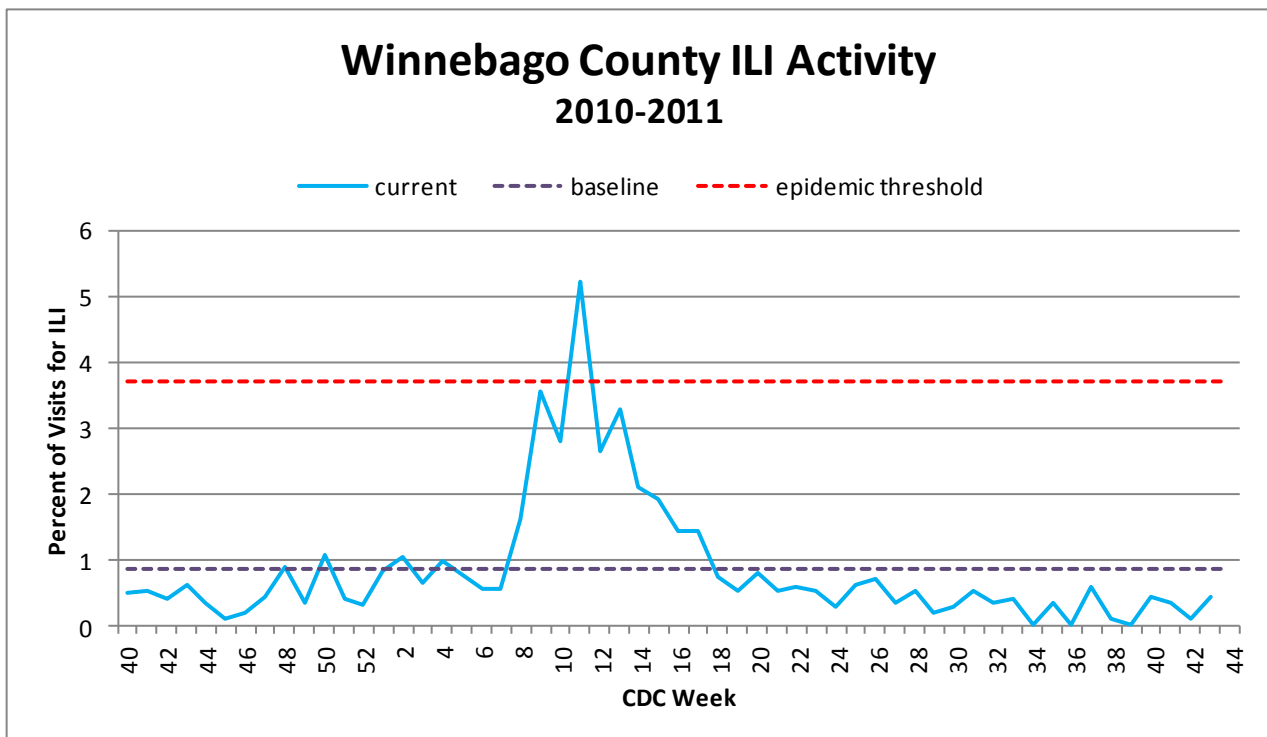


**Figure 1** displays the current number of rapid flu cases reported to our department and broken down by influenza sub-typing compared to a 4-year historical average (the red line). 5 total A positive rapid flu cases have been reported for the 2011-12 flu season. No cases have been reported for Week 44 which is well below the historical average of 71.67 cases.

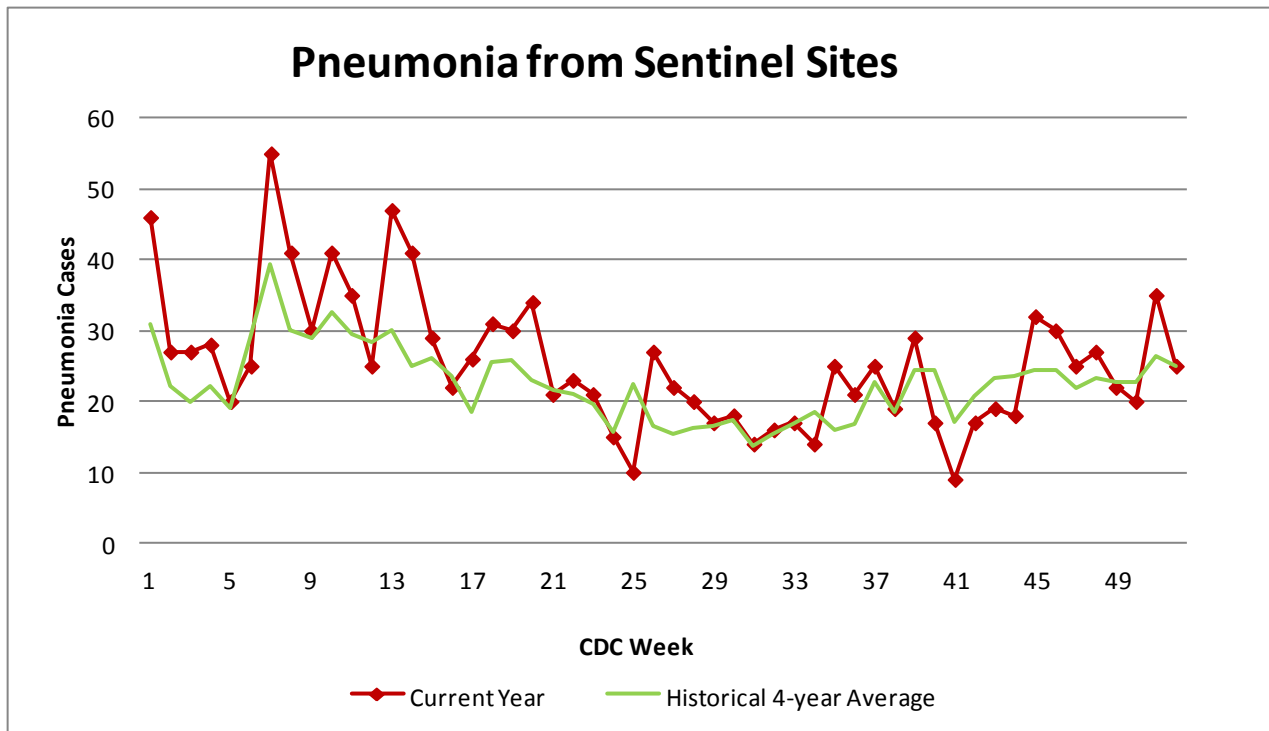
## Weekly Percentage of Visits as Identified by Essence



**Figure 2** displays the weekly percentage of Influenza-Like Illness (ILI) as identified by the Essence Syndromic Surveillance System. The blue line shows percentage of ILI Emergency Department visits in Winnebago County from our two participating hospitals and the red line shows the regional ILI percentage for all counties participating in ESSENCE. For CDC Week 44, Winnebago county reported an ILI percent of **0.45**, slightly below the regional ILI percent of **1.02**.



**Figure 3** is the representation of all visits from our sentinel sites not participating in Essence for ILI. ILI activity was very low at 0.54% among the three sites for CDC Week 44.



**Figure 4** compares the current number of pneumonia hospital admissions (red line) against the 4-year historical average (the green line). For CDC Week 44, we are below the 4-year historical average of 23.5 with only 18 total hospital admittances reported. Note that all data are preliminary and numbers for weeks 42, 43, and 44 for 2011 are still arriving.

### Outside the County:

Illinois influenza activity (as of Week 44):

**Illinois reported NO INFLUENZA ACTIVITY**

- One state reported local influenza activity (Virginia).
- Sporadic influenza activity was reported by the District of Columbia, Puerto Rico, and 25 states (Alaska, California, Colorado, Connecticut, Florida, Hawaii, Indiana, Kentucky, Louisiana, Massachusetts, Minnesota, Nevada, New Jersey, New Mexico, New York, North Dakota, Ohio, Oklahoma, Oregon, Pennsylvania, Rhode Island, Texas, Utah, Washington, and Wyoming).
- No influenza activity was reported by Guam, the U.S. Virgin Islands, and 24 states (Alabama, Arizona, Arkansas, Delaware, Georgia, Idaho, Illinois, Iowa, Kansas, Maine, Maryland, Michigan, Mississippi, Missouri, Montana, Nebraska, New Hampshire, North Carolina, South Carolina, South Dakota, Tennessee, Vermont, West Virginia, and Wisconsin).



**Questions/Comments?**

Amanda Mehl, MPH  
Epidemiologist  
Health Promotion and Protection  
Winnebago County  
Health Department  
401 Division Street  
Rockford, IL 61104  
815-720-4215



**Public Health**  
Prevent. Promote. Protect.

ILI Activity Level (Influenza like Illnesses reported Week 44)

Illinois is **MINIMAL** on the scale