



Winnebago County Health Department



Weekly Influenza Surveillance Report CDC Week 8 February 20-February 26 2011

In Brief:

Mortality

Confirmed deaths from Pneumonia/Influenza Week 8: **3**

Percent of deaths due to Pneumonia/Influenza: **6.12%**

Baseline—**1.8%**, Epidemic—**7.9%**

School Attendance

Sentinel Attendance – All Schools – Week of 02/21 – 02/25: **90.36%**

Influenza-Like Illness Surveillance

Sentinel Site ILI rate (3 sites participating)—week ending February 26th:
6.35%

Pneumonia Hospital Admissions

Week Ending February 26th: **33**

Previous Week Ending February 19th: **51**

Note: Numbers include 2 hospitals and are one week behind due to reporting methods.

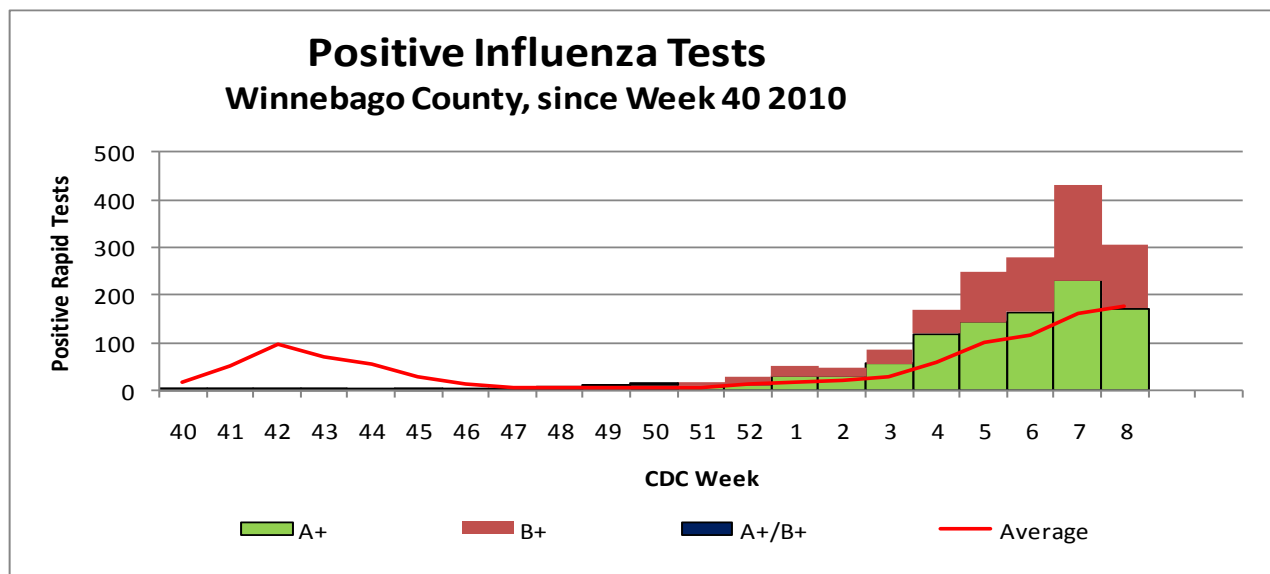
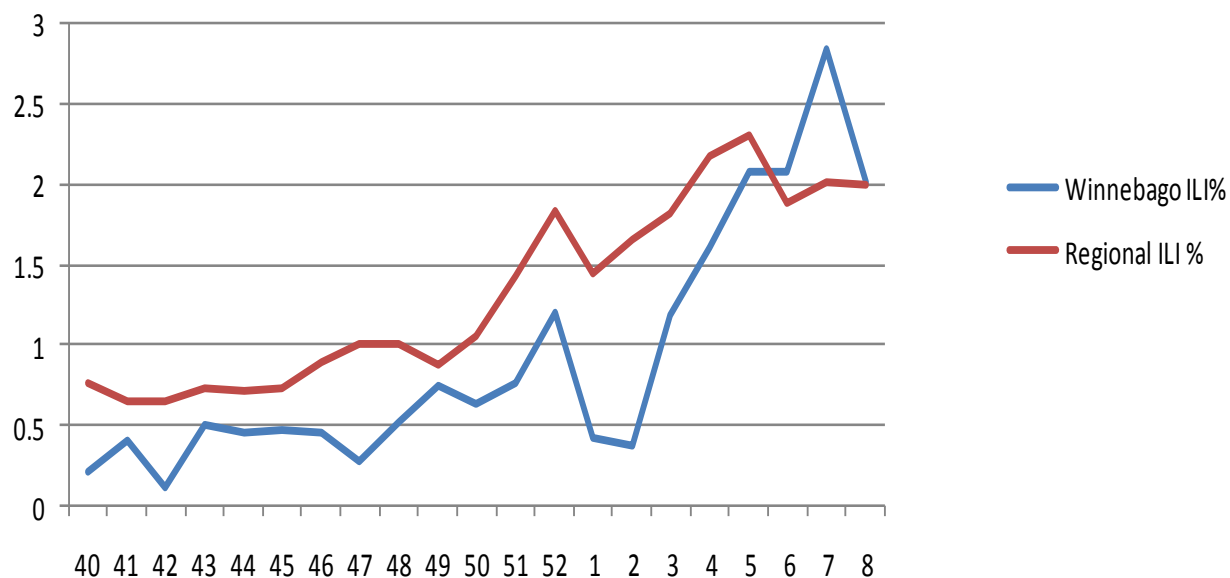


Figure 1 displays the current number of rapid flu cases reported to our department for the 2010-2011 flu season (broken down by influenza sub-typing) compared to a 4-year historical average (the red line). Ending numbers for CDC week 8 in Winnebago County show 1911 total positive rapid flu reported for this flu season. We are currently above the 4-year average for flu cases in our county. The historical average for Week 8 is currently 175.25 while our reported cases show 306 total for this week alone. Flu season has peaked and we are beginning to see a

Weekly Percentage of Visits as identified by Essence



decrease in positive cases reported in the community this week. **Figure 2** displays the weekly percentage of ILI as identified by Essence. The blue line shows percentage of ILI Emergency Department visits in Winnebago County from our two participating hospitals and the red line shows the regional ILI percentage for all counties participating in the Essence Syndromic Surveillance System. As of CDC week 8 Winnebago County has come down and is barely above the regional level for percentage ILI (Winnebago is at a rate of 2.01% while the region overall was 1.99% for week 8).

Winnebago County ILI Activity Flu Season 2010-2011 (CDC Weeks 40-25)

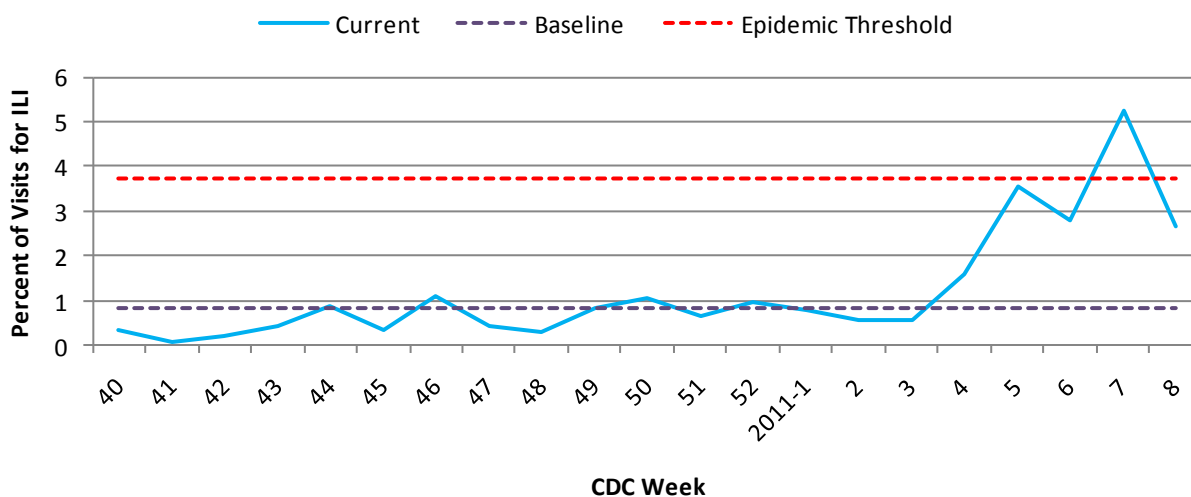


Figure 3 is the representation of all visits from our sentinel sites not participating in Essence for Influenza-Like Illness, or ILI. our three sentinel sites have reported a total of **3.15%** ILI for week 8. The rate for week 8 2011 are up slightly from the average of 2.64% and the seasonal baseline of 0.84% but below the epidemic threshold of 3.71%.

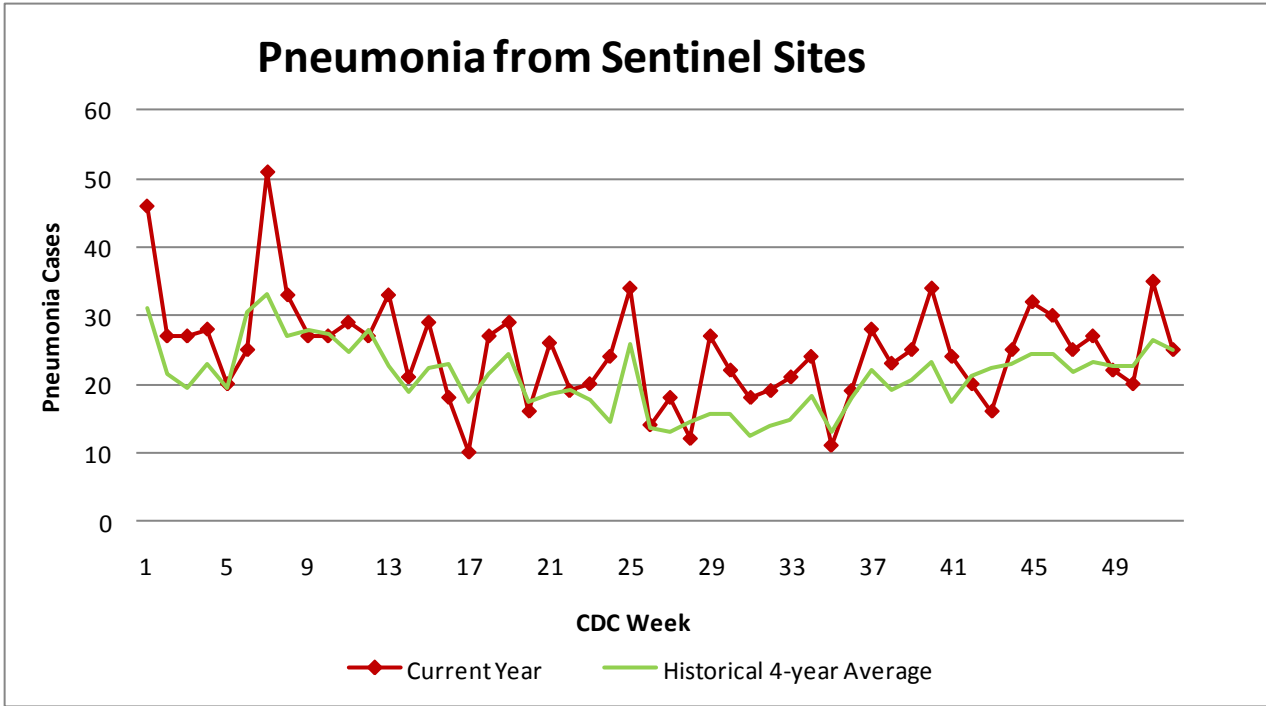


Figure 4 compares the current number of pneumonia hospital admissions (red line) against the 4-year historical average (the green line). The first 4 weeks of the year have reported above the historical average however in weeks 5 and 6 we dropped slightly below the 4-year average. Week 7 brought us back over the 4-year average of 33.25 with 51 total cases of pneumonia admits to our two participating hospitals. In week 8, we continue above the historical average with 33 reported cases compared to the average of 27. Please note that numbers for CDC week 8, 9 and 10 for 2011 are still arriving.

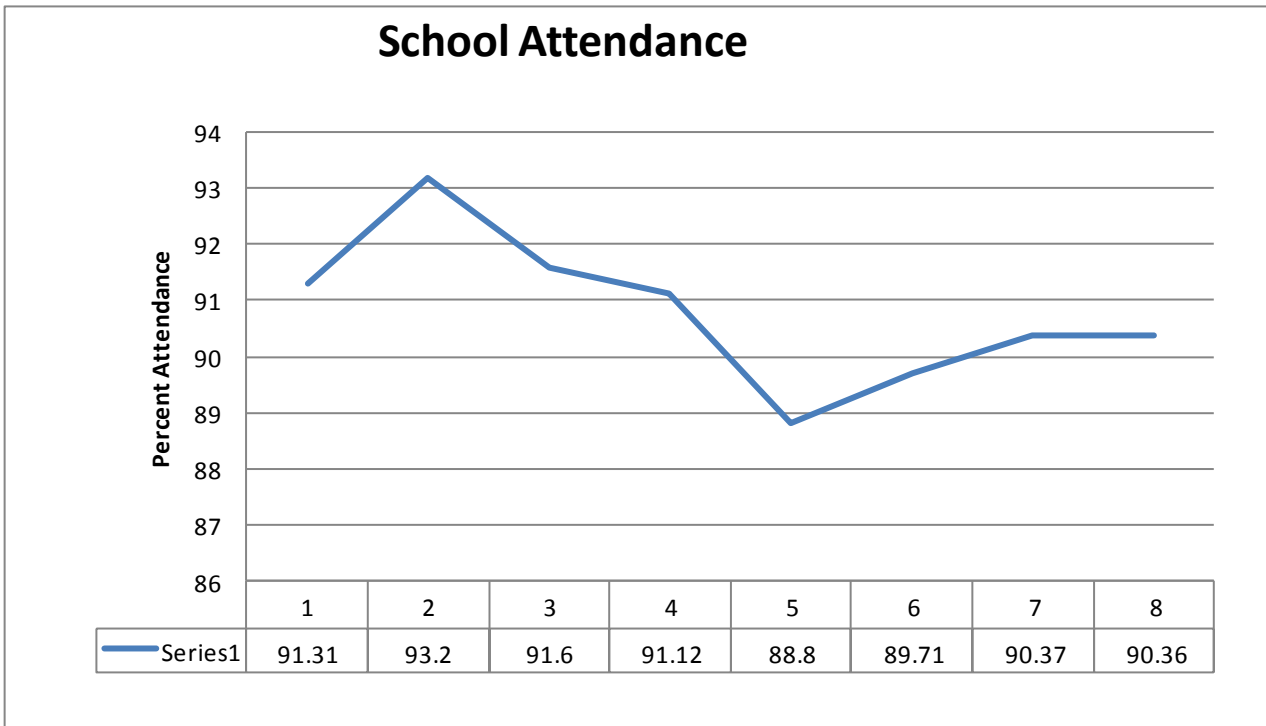


Figure 5 shows school attendance to date in 2011. for the first 5 weeks of the year, school attendance was on a slight decrease for RPS District 205 but was on the rise in weeks 6 and 7. For CDC week 8, current attendance rate is holding steady above 90% at 90.36%

Number of confirmed H1N1 influenza cases to date in Winnebago County (2011): 3 (IDPH)

Number of confirmed Novel H3N2 influenza cases to date in Winnebago County (2011): 5 (IDPH)

Number of confirmed Novel Influenza B cases for to date in Winnebago County (2011): 4 (IDPH)

Outside the County:

Illinois influenza activity (as of week 8):

Widespread

ILI Activity Level (Influenza like Illnesses reported)

Illinois is **Moderate** on the scale

United States influenza activity (as of Week 8):

Widespread activity in 44 States

Regional activity in 5 states

Local activity in Washington DC and Oregon

Sporadic activity in Puerto Rico and the U.S. Virgin Islands

NO influenza activity in Guam



Questions/Comments?

Amanda Mehl, MPH
Epidemiologist
Health Promotion and Protection
Winnebago County
Health Department
401 Division Street
Rockford, IL 61104
815-720-4215



Public Health
Prevent. Promote. Protect.